



## **PALMERSTON NORTH SPEED LIMITS BYLAW 2020**

## **PALMERSTON NORTH SPEED LIMITS BYLAW 2020**

This Bylaw is made under section 22AB of the Land Transport Act 1998.

### **1. TITLE**

- 1.1 The title of this Bylaw is the 'PALMERSTON NORTH SPEED LIMITS BYLAW 2020.

### **2. PURPOSE**

- 2.1. The purpose of this Bylaw is to set speed limits on any road within the jurisdiction of the Palmerston North City Council other than State Highways controlled by the New Zealand Transport Agency.

### **3. COMMENCEMENT AND APPLICATION**

- 3.1. This Bylaw comes into force on 1 April 2021, and the Palmerston North City Council Speed Limits Bylaw 2013 is revoked at the commencement of this Bylaw.
- 3.2. This Bylaw applies to all roads under the control of the Palmerston North City Council.

#### **4. DEFINITIONS**

##### **4.1. In this Bylaw:**

<b>Council</b>	means the Palmerston North City Council
<b>Road</b>	<p>(a) includes:</p> <ul style="list-style-type: none"><li>(i) a street; and</li><li>(ii) a motorway; and</li><li>(iii) a beach; and</li><li>(iv) a place to which the public have access, whether as of right or not; and</li><li>(v) all bridges, culverts, ferries and fords forming part of a road or street or motorway, or a place referred to in (iv); and</li><li>(vi) all sites at which vehicles may be weighed for the purposes of the Land Transport Act 1998 or any other enactment; and</li></ul> <p>(b) includes a section of a road.</p>
<b>Road Controlling Authority</b>	<p>in relation to a road:</p> <p>(a) means the authority, body or person having control of the road; and</p> <p>(b) includes a person acting under and within the terms of a delegation or authorisation given by the controlling authority.</p>
<b>Speed Limit</b>	<p>(a) means—</p> <ul style="list-style-type: none"><li>(i) an urban, rural, permanent, holiday, temporary, emergency, or variable speed limit; and</li><li>(ii) the maximum speed at which a vehicle may legally be operated on a particular road; but</li></ul> <p>(b) does not mean the maximum permitted operating speed for classes or types of vehicle specified in any Act, regulation, or rule.</p>
<b>Urban Traffic Area</b>	means an area designated under the Land Transport Rule: Setting of Speed Limits 2017 that consists of one or more specified roads or a specified geographical area, to which the urban speed limit generally applies.

## **5. SPEED LIMITS**

- 5.1. The roads or areas described in the attached schedules or as shown on a map referenced in the schedules are declared to have the speed limits specified in the schedules and maps, which are part of this Bylaw.
- 5.2. The areas bounded by the green dotted lines on the maps in Schedule 1 are the urban traffic areas in Palmerston North. All roads within the urban traffic areas are deemed to have a speed limit of 50 km/h unless otherwise specified in the schedules to this Bylaw.

## **6. LIST OF SCHEDULES AND MAPS**

<b>Schedule 1:</b>	Palmerston North Speed Limits Maps showing: Roads with a speed limit of 100 km/h Roads with a speed limit of 80 km/h Roads with a speed limit of 70 km/h Roads with a speed limit of 60 km/h Roads within an urban traffic area which have a speed limit of 50 km/h Road with a speed limit of 50 km/h Roads within an urban traffic area which have a speed limit of 30 km/h Roads with a speed limit of 30 km/h
Map 1	Map showing speed limits in Palmerston North
Map 1A	Detailed map showing speed limits in Palmerston North villages
Map 2	Detailed maps showing variable speed limits (refer to Schedule 2 for descriptions)
<b>Schedule 2:</b>	Table showing schools and applicable roads to which a variable 40 km/h speed limit applies.

### **Explanatory Note**

1. Offences, penalties, fines and fees relating to infringement of speed limits are provided for in the relevant provisions of the Land Transport Act 1998, the Land Transport (Road User) Rule 2004 and the Land Transport (Offences and Penalties) Regulation 1999.

**Schedule 2 Palmerston North City Council Speed Limits Bylaw 2020: Schools with a variable speed limit**

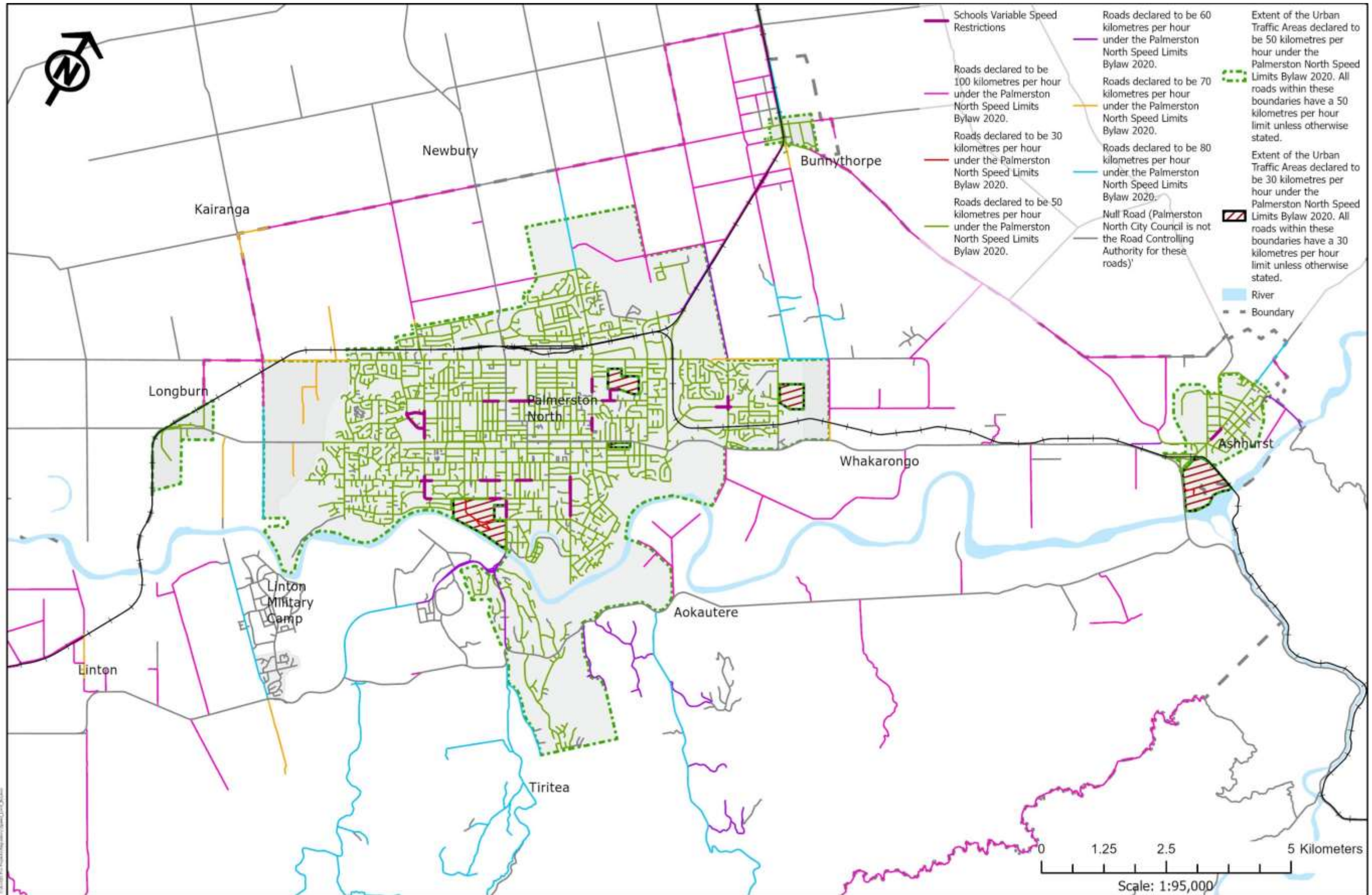
Ashhurst School  
Awatapu School  
Central Normal School  
College St School  
Cornerstone Christian School  
Freyberg High School  
Hokowhitu School  
Monrad Intermediate School  
Palmerston North Boys High School  
Palmerston North Girls High School  
Palmerston North Intermediate Normal School  
Ross Intermediate School  
St James School  
St Mary's School  
Takaro School  
Terrace End School  
West End School

## Schedule 2 Palmerston North City Council Speed Limits Bylaw 2020: Roads with variable speed limits

The variable speed limits will only apply at the times when children usually travel to or from school. The roads or areas described in this Schedule and shown on Map 2 of Schedule 1 are declared to have a variable speed limit of 40 km/h as specified in this Schedule.

<b>40/50 km/h VARIABLE SPEED LIMIT</b>	
<b>Road Name</b>	<b>Description</b>
Cambridge Avenue	Ashhurst School Cambridge Ave, from a point 20 metres north of Oxford Street to a point 10 metres north of Petes Way.
Featherston Street	Central Normal School Featherston Street from a point 10 metres east of Bourke Street to a point 10 metres east of Taonui Street.
College Street	College Street Normal School College Street, from a point 20 metres east of Morris Street to a point 10 metres east of Union Street.
Roberts Line, Mihaere Drive, Fernlea Avenue	Cornerstone Christian School Roberts Line, from a point 40 metres south of Mihaere Drive to a point 80 metres north of Daniel Place. Mihaere Drive, from a point 230 metres west of Roberts Line to its intersection with Roberts Line. Fernlea Avenue, from a point 40 metres east of Roberts Line to its intersection with Roberts Line.
Featherston Street Freyberg Street	Freyberg High School and Ross Intermediate School Featherston Street, from a point 20 metres west of Rangiora Avenue to a point 80 metres east of Freyberg Street Freyberg Street, in its entirety.
Albert Street	Hokowhitu School Albert Street, from a point 40 metres north of Churchill Avenue to a point 30 metres north of Wallace Place.

Botanical Road, Brighton Crescent and Highbury Avenue.	Monrad Intermediate and Takaro School Botanical Road, from a point 50 metres north of Pioneer Highway to a point 50 metres north of Brighton Crescent; Brighton Crescent, in its entirety; Highbury Avenue, from a point 30 metres north of Brighton Crescent to its intersection with Botanical Road.
Featherston Street	Palmerston North Boys High School Featherston Street, from a point 20 metres west of Pirie Street to a point 55 metres east of Rangitikei Street.
Fitzherbert Avenue Park Road	Palmerston North Girls High School Fitzherbert Avenue, from a point 40 metres north of Te Awe Awe Street to a point 40 metres north of Palm Avenue. Park Road, from a point 40 metres east of Batt Street to a point 90 metres east of Linton Street.
College Street	Palmerston North Intermediate Normal School College Street, from a point 40 metres west of South Street to a point 80 metres east of Linton Street.
Albert Street	St James School Albert Street, from a point 30 metres north of Wallace Place to a point 50 metres north of Te Awe Awe Street.
Ruahine Street	St Mary's School Ruahine Street from a point 30 metres south of Newhaven Place to a point 160 metres north of Featherston Street
Ruahine Street	Terrace End School Ruahine Street from a point 40 metres north of Grey Street to a point 30 metres south of Innes Place
Botanical Road College Street Park Road Wikiriwhi Crescent	Westend School and Awatapu College Botanical Road, from a point 80 metres north of College Street to its intersection with Park Road. Park Road, from a point 10 metres east of Katene Street to its intersection with Botanical Road. College Street, from a point 50 metres west of Botanical Road to a point 130 metres east of Botanical Road.

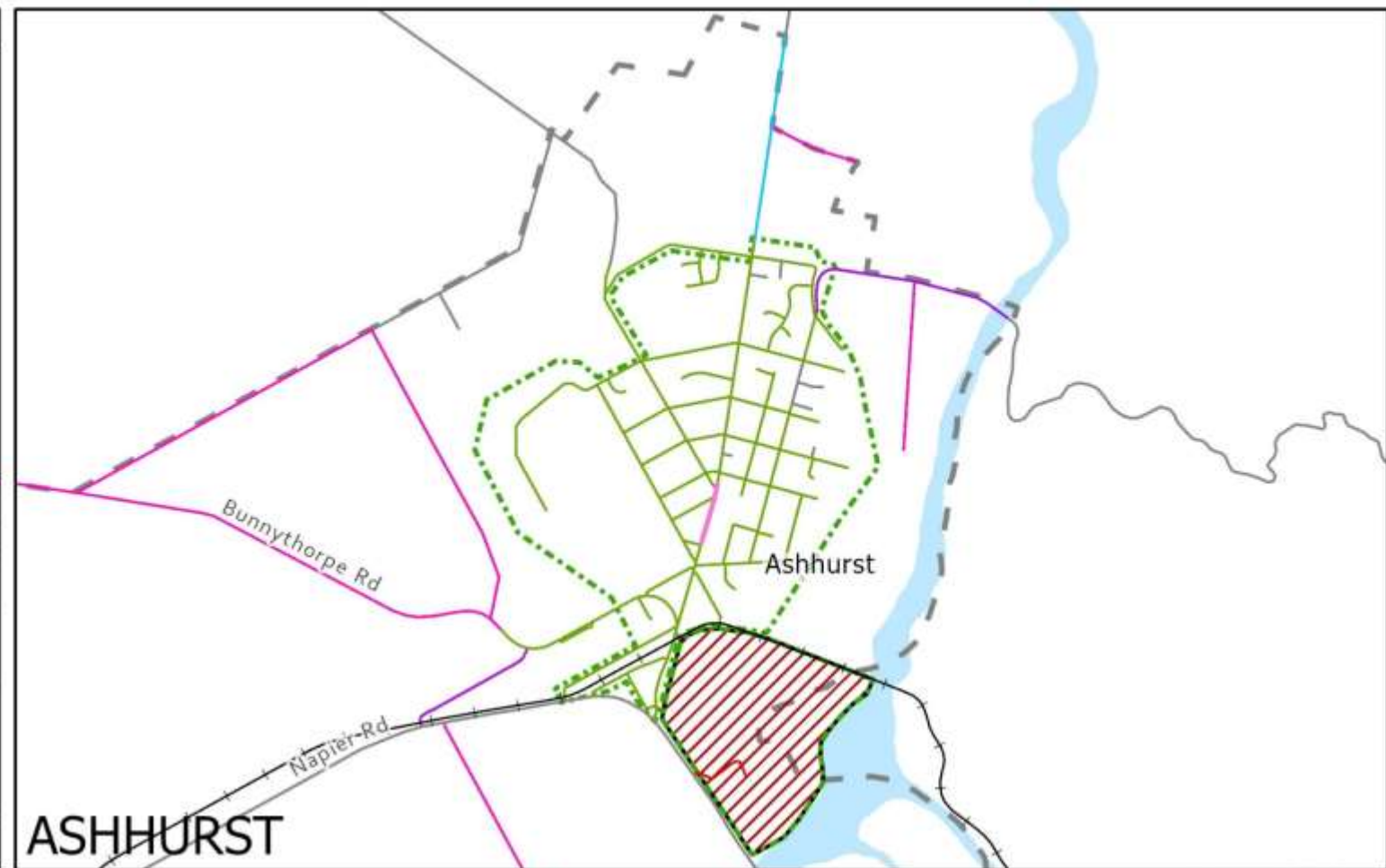
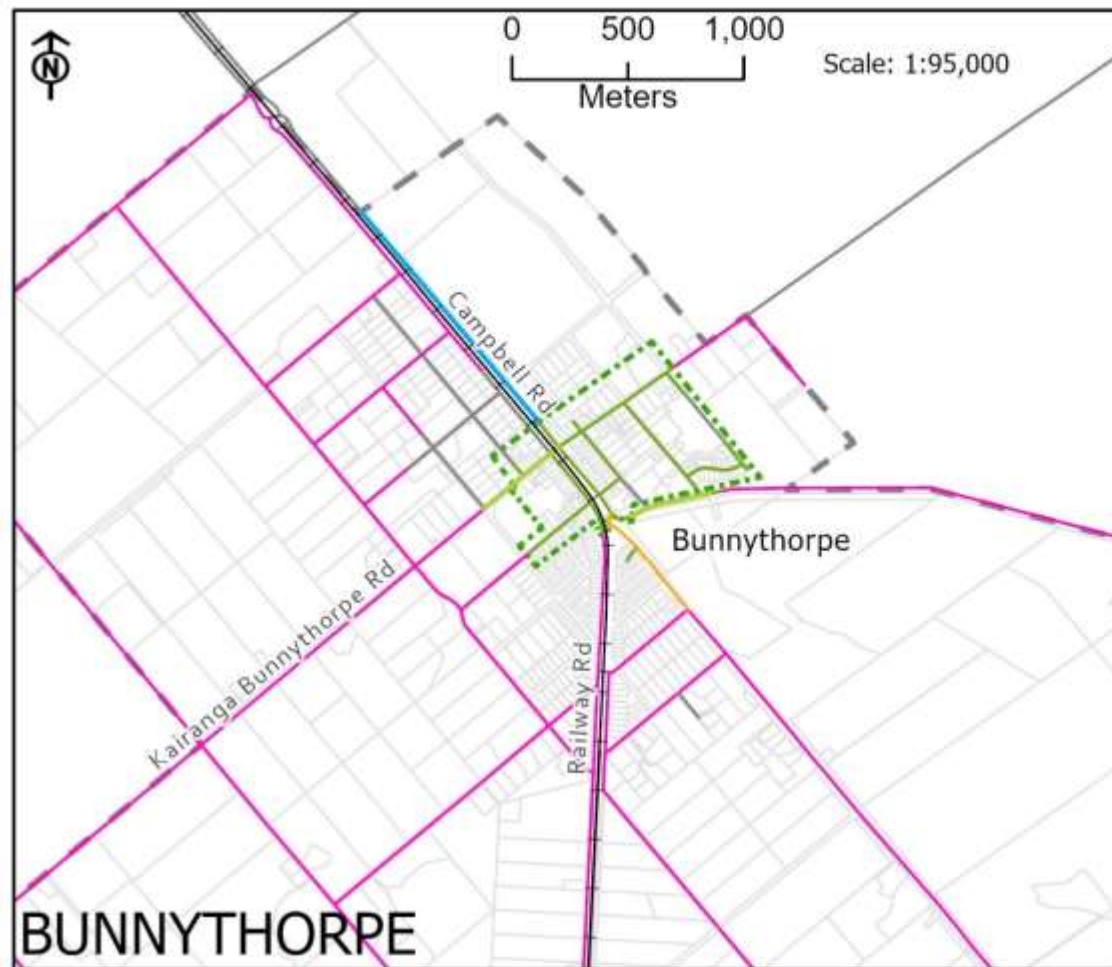


# **PALMERSTON NORTH CITY SPEED LIMITS BYLAW**

## **Road Speed Limits and Schools Variable Speed Restrictions**

**Schedule 1 Map1  
Updated May 2021**





- Schools Variable Speed Restrictions
- Roads declared to be 80 kilometres per hour under the Palmerston North Speed Limits Bylaw 2020.
- Roads declared to be 100 kilometres per hour under the Palmerston North Speed Limits Bylaw 2020.
- Roads declared to be 30 kilometres per hour under the Palmerston North Speed Limits Bylaw 2020.
- Roads declared to be 50 kilometres per hour under the Palmerston North Speed Limits Bylaw 2020.
- Roads declared to be 60 kilometres per hour under the Palmerston North Speed Limits Bylaw 2020.
- Roads declared to be 70 kilometres per hour under the Palmerston North Speed Limits Bylaw 2020.
- Null Road (Palmerston North City Council is not the Road Controlling Authority for these roads)
- - - Extent of the Urban Traffic Areas declared to be 50 kilometres per hour under the Speed Limits Bylaw 2020. All roads within these boundaries have a 50 kilometres per hour limit unless otherwise stated.
- - - Extent of the Urban Traffic Areas declared to be 30 kilometres per hour under the Palmerston North Speed Limits Bylaw 2020. All roads within these boundaries have a 30 kilometres per hour limit unless otherwise stated.
- - - Boundary

## PALMERSTON NORTH CITY SPEED LIMITS BYLAW

## Road Speed Limits and Schools Variable Speed Restrictions

## Schedule 1 Map1 Updated May 2021



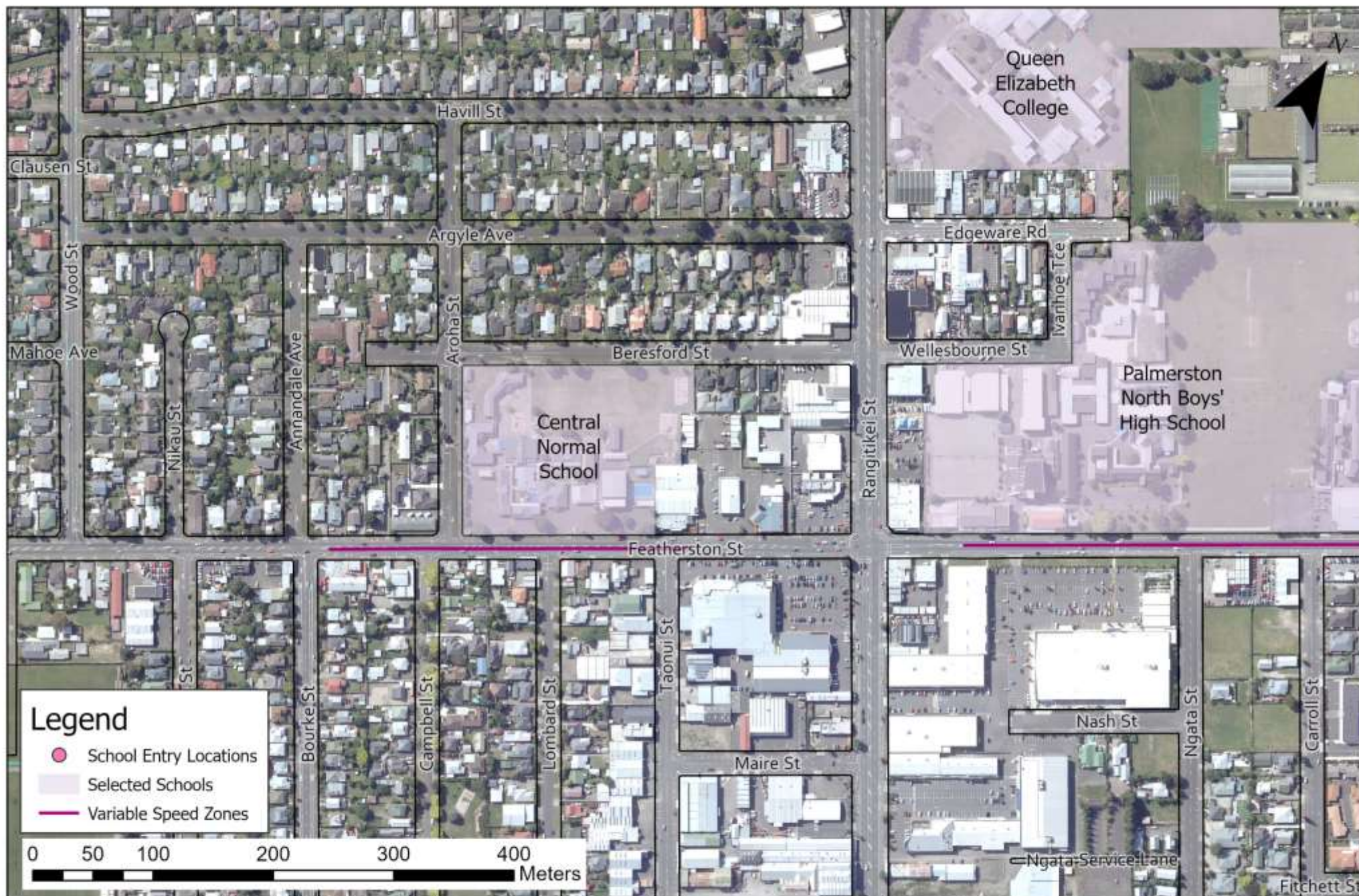


**PALMERSTON NORTH CITY  
SPEED LIMITS BYLAW**

**Schools with a variable speed restriction  
Ashhurst School**

**Schedule 1 Map2  
With Effect 01/12/2014**





**PALMERSTON NORTH CITY  
SPEED LIMITS BYLAW**

**Schools with a variable speed restriction  
Central Normal School**

**Schedule 1 Map2  
With Effect 01/12/2014**





**PALMERSTON NORTH CITY  
SPEED LIMITS BYLAW**

**Schools with a variable speed restriction  
College Street Normal School**

**Schedule 1 Map2  
With Effect 01/12/2014**





**PALMERSTON NORTH CITY  
SPEED LIMITS BYLAW**

**Schools with a variable speed restriction  
Cornerstone Christian School**

**Schedule 1 Map2  
With Effect 01/12/2014**









**PALMERSTON NORTH CITY  
SPEED LIMITS BYLAW**

**Schools with a variable speed restriction  
Monrad Intermediate & Takaro School**

**Schedule 1 Map2  
With Effect 01/12/2014**



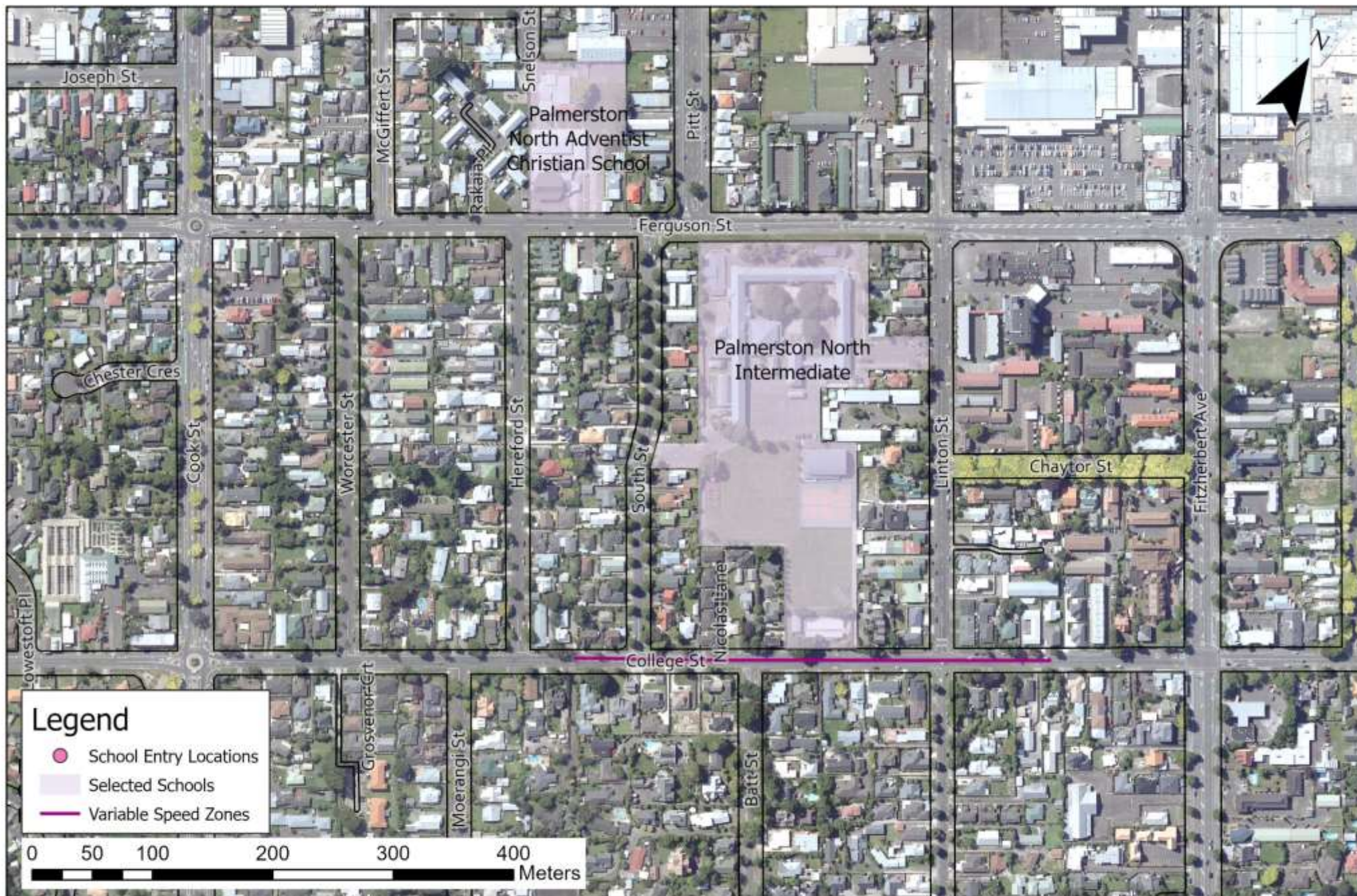


**PALMERSTON NORTH CITY  
SPEED LIMITS BYLAW**

**Schools with a variable speed restriction  
Palmerston North Girls' High School**

**Schedule 1 Map2  
With Effect 01/12/2014**





**PALMERSTON NORTH CITY  
SPEED LIMITS BYLAW**

**Schools with a variable speed restriction  
Palmerston North Intermediate Normal School**

**Schedule 1    Map2  
With Effect 01/12/2014**





**PALMERSTON NORTH CITY  
SPEED LIMITS BYLAW**

**Schools with a variable speed restriction  
Palmerston North Boys' High School**

**Schedule 1 Map2  
With Effect 01/12/2014**





**PALMERSTON NORTH CITY  
SPEED LIMITS BYLAW**

**Schools with a variable speed restriction  
Ross Intermediate & Freyberg High School**

**Schedule 1    Map2  
With Effect 01/12/2014**









**PALMERSTON NORTH CITY  
SPEED LIMITS BYLAW**

**Schools with a variable speed restriction  
St Mary's School**

**Schedule 1 Map2  
With Effect 01/12/2014**









**PALMERSTON NORTH CITY  
SPEED LIMITS BYLAW**

**Schools with a variable speed restriction  
West End School & Awatapu College**

**Schedule 1 Map2  
With Effect 01/12/2014**