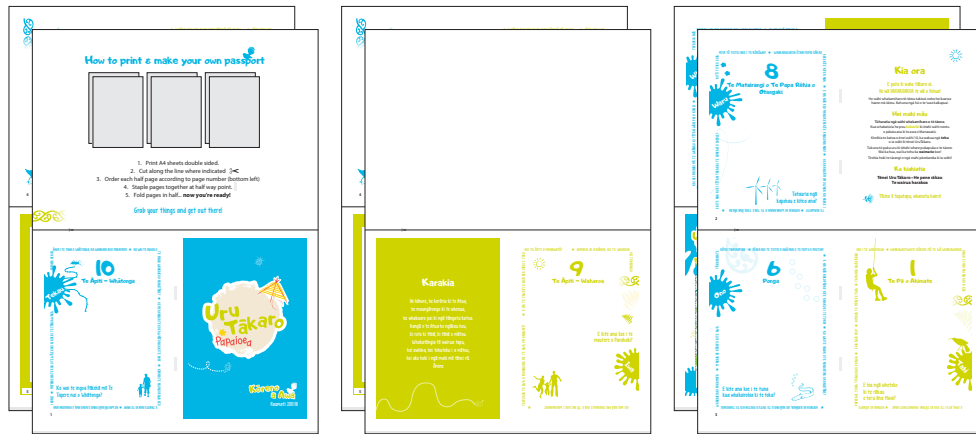
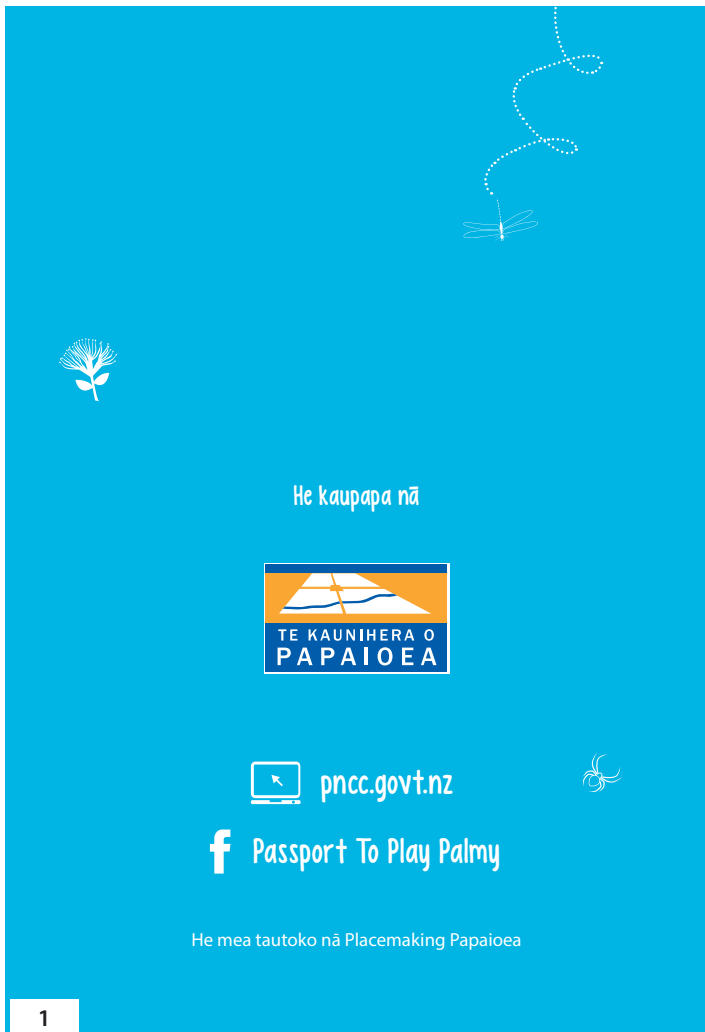


How to print & make your own passport



1. Print A4 sheets double sided.
2. Cut along the line where indicated ✂
3. Order each half page according to page number (bottom left)
4. Staple pages together at half way point.
5. Fold pages in half... **now you're ready!**

Grab your things and get out there!





Karakia

He hōnore, he korōria ki te Atua,
he maungārongo ki te whenua,
he whakaaro pai ki ngā tāngata katoa.

Hangā e te Atua he ngākau hou,
ki roto ki tēnā, ki tēnā o mātou.

Whakatōngia tō wairua tapu,
hei awhina, hei tohutohu i a mātou,
hei ako hoki i ngā mahi mō tēnei rā.

Āmine



Karakia whakamutunga

Kia tau ki a tātou katoa,
te atawhai o tō tātou Ariki a Ihu Karaiti,
me te aroha o te Atua,
me te whiwhinga tahitanga ki te wairua tapu,
ake, ake, ake,
Āmine.



"Kua kaupapa i a au te aroha, mā koutou e whakaoti."
Te Pēti Te Awe Awe (Rangatira o Rangitāne)



Ētahi atu mahi pārekareka UTU-KORE



16 Pūhia he tohetaka, ka tuku ai i ō tūmanako	17 Tahuna he ahi kōpae, ka kōrero paki ai	18 Tukuna he rārā kia tere i te au o te awa	19 Pikia he rākau
20 Whakatōngia he kākano, ka mātaki ai i tōna tipu	21 Moea te pō ki raro i te mata o Ranginui	22 Ākona ngā ingoa o ētahi tipu māori me ētahi manu māori	23 Eke pahikara ki runga rōnaki
24 Mātaihia te mata o Ranginui	25 Whakamahia he pune hei maka paru ki tētahi papa pūrure	26 Hangaia he anahera ki te onepū	27 Whakamomokatia tētahi kararehe, ōna tapuwae rānei
28 E peke ki te wai	29 Puritia tētahi ngārara whakamataku ki tō ringa	30 Tākaro ki waho i te atarau	

palmydirty30.weebly.com



Kia ora

E puta ki waho tākarō ai.
He wā HARAKOAKOA te wā o Rehua!

He wāhi whakamiharo tō tātou takiwā noho hei kaewa
haere mā tātou. Kuhuna ngā hū o te 'wae kaikapua'.

Hei mahi māu

Tūhuratia ngā wāhi whakamiharo o tō tāone.

Kua whakatūria he pou **kākāriki** ki ētahi wāhi rorotu
e pātata ana ki te awa o Manawatū.

Kimihia te katoa o ēnei wāhi 10, ka wakuā ngā **tohu**
o ia wāhi ki tēnei UruTākaro.

Tukuna tō puka uru ki tētahi whare pukapuka o te tāone.

Wai ka hua, wai ka tohu ka **waimarie** koe!

Tirohia hoki te rārangi o ngā mahi pārekareka ki ia wāhi!

Ka hiahiatia

Tēnei Uru Tākaro • He pene rākau
Te wairua harakoa



Tikina ō taputapu, whanatu haere!



ĀHUA I TE TAHA O WHĀTONGA, KA WHAKAIRI AI KI PUKAMATA * KO WAI TE INGOA O
TE RINGA WHAKARO O RANGITANE? * HE MEA HANGA TE HOE A WHĀTONGA KI TE AHAP? * KIMIHIA TE RAU NUI RANA ATU

TEKAU

10
Te Āpiti - Whātonga

Ko wai te ingoa Pākehā mō Te
Tapere nui o Whātonga?

KONEI * MATAPHEHA TE ROA O TE WĀ E HOKI AI KOE KI TE TŌNGA WAKA.
E TRAKOTO ANA KI TE PAPAP? * KO WAI MĀ MĀ NGĀ MANU E NOHO ANA, E RANGONA ANA

NUI I TE WAERENGA * WHAKAWHITIWHITI KŌRERO MŌ TE WĀ WHAKAWHANA
UNGA E TINO PAI ANA KI A KOE

1
Te Pā o Ahimate

E hia ngā whetoko
ki te rākau
e toru ōna tīwai?

PAPATAHI. TUHIA TŌ INGOA KI RUNGA * E HIA NGĀ POU? * KIMIHIA TE MŌREKE TAEA * TATAURIA NGĀ RĀKAU
E OMA, ATU I TE POU KI KI TĀTĀHI. PARAHUHUHUHUHU ANA! * KIMIHIA HE KŌHĀTU

Tōku Pepeha



- Ko _____ taku ingoa
- Ko _____ taku matua
- Ko _____ taku whaea
- Ko _____ taku tuakana
- Ko _____ taku teina
- Ko _____ taku kura
- Ko _____ taku maunga
- Ko _____ taku awa
- Ko _____ taku waka
- Ko _____ taku hapū
- Ko _____ taku marae
- Ko _____ tōku iwi

Te Pepeha o Rangitāne o Manawatū



Ko Tararua rāua ko Ruahine ngā pae maunga
 Ko Kurahaupō te waka
 Ko Manawatū te awa
 Ko Rangitāne o Manawatū te iwi

Mahi pārekareka UTU-KORE



Ko te 'Palmy Dirty 30' te ingoa o tētahi kaupapa pārekareka, kaupapa UTU-KORE e haere ana i tēnei raumati. Tohua ngā mea ka oti i a koe, i te wā e whai ana koe i ngā tohu wāhi mō tō UruTākaro?

1 Kohia he taonga o te ao tūroa	2 Tūnua he kai ki waho	3 Kihia he poraka	4 E oma whakaheke i tētahi puke nui
5 Tārere ki raro i tētahi rākau	6 Pakanga wai me ō hoa	7 Hangaia he pāwai	8 Haere ki te kato huarākau
9 E reti i tētahi paheketanga i te ua	10 E tū, ka hongī putiputi ai	11 Hangaia he toi kōhatu	12 Hangaia he ranunga haunga
13 Kia taurite tō tū ki runga rākau	14 Ripia he kōhatu	15 Hangaia he pā onepū e whai awakeri ana	

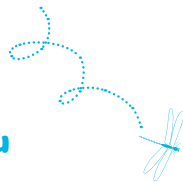


TUHIA TŌ INGOA KI TE ARA PĀKEHO * KIMIHIA TE HUIA KEI TE TĀRAITANGA

O TE WAKA * E KITEA ANA RĀNEI HE PĀREKA I TE WAI? * TĀTAURIA NGĀ TOETOE KEI TAITUA O TE AWA *



2
Waka/Tauihu



ATU I TE WHAKAPUKEPUKE

E hia katoa ngā kaupae i te papa whakatata atu ki te awa?

HOPUKIA HE KIRIĀHUA KA WHAKAKIRI AI KI PU KAKAMATA * TAKAHURUHURI *

KEI TE ĀPITI O MANAWATŪ?

* HOPUKIA HE KIRIĀHUA, KO TE WAHAROA

TAUTORUA TE AWA O POHANGINA ME TE AWA O MANAWATŪ * E HIA TE TAWHITI O NGĀ ARA HIKO E TORU

HEI TURANGO



9

Te Āpiti - Waharoa



E kite ana koe i te moutere o Parahaki?



KO WAI NGĀ PĀE MAUNGA E RUA E TŪ NEI KOE I WAENGANUI? *

MITA TŌ TEITEI AKE I TE KŌKŪWAI? * WHAKAINGOATIA ĒTAHI MOMO RĀKAU

KI TŌ TITIRO E HIA

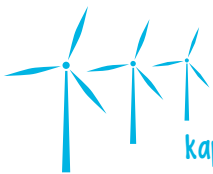
8

Te Matairangi o Te Papa Rēhia o Otangaki



KEREKE E KITEA ANA * E HIA NGĀ REO MANU KEREKE E RANGONA ANAZ * HE AHA NGĀ MOMO WAKA KA HAERE I

E KITE ANA KOE I TĒTAHI TARAKA I TE HUARAHI O SADDLE? * HOPUKIA HE WHAKAAHUA O TE TIHI E TORU ŌNA RĀKAU



Tatauria ngā kapohau e kitea ana?

TE ARAWHITI? * HOPUKIA HE WHAKAAHUA O TE TIHI E TORU ŌNA RĀKAU

E MŌHIO ANA KOE KI TE KUPU PĀKEHĀ MŌ 'AWA'?

* HĪKOI ATU I TE

NGAHERE, RAPU AI I ĒTAHI 'KŌHATU PAPAHEA'

3

He Ara Kotahi



TUARONGO * TATAURIA NGĀ WHARE NOHO KEI TE PAPA HŌPUNI * E HIA NGĀ KAIEKE PAHIKARA E KITE ANA KOE?

PĒHEA NEI TE WHĀNUI O TE AWA? * HOPUKIA HE KIRIĀHUA, KO TE AWA HEI

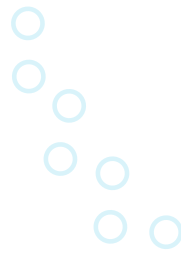


E kite ana koe i te wāhi ka whakatūria te arawhiti hou?

KĒMU TAUPUNIPUNI * PĒHEA NEI TE TEITEI O NGĀ PARI O TE MOTU O POUTOA?

TĀKAROHIA TE

6
Ponga



* E HIA NGĀ KARU PŪA E KITE ANA KOE I TE TOKAR? * KO WAI TE INGA O TE RANGATIRA O RANGITĀNE?

WHAKAIRIA KI PUKAMATA * MAKAIA HE KŌHATU KI TE AWA

E kite ana koe i te tuna kua whakairohia ki te toka?



* HOPUKIA HE KIRIĀHUA, KO NGĀ PARI O TE MOTU O POUTOA KEI TE TUARONGO.

ANA I KONEI? * I TĒHEA TAU HOKONA AI TE WHENUA E TE KAIMIRA RĀKAU I

A RANGITĀNE? * TOHUA TE AHUNGA KI TE AWA.

5

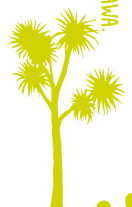
Te Hāpua o Hokowhitu



KOE? * HOPUKIA HE KIRIĀHUA I TE ARAWHITI * INĀHEA TE ARAWHITI I WHAKATŪRIA AI? * HE KUIHI E KITEA

HE AHA TE KŌKERO WHAKAKATA E TIHO PAI ANA KI A

E hia ngā tī kōuka e tipu ana i te moutere?



TATAURIA NGĀ KAUPAE I TE ARA NGAHERE MAI I RARO KI RUNGA * HE AHA NGĀ PAINGA O

TE WHAKATU PĀ KI KONEI? *

HE AHA NGĀ WHARE TORORANGI I TE TĀONE E KITEA ATU ANA? *

*

KAI HEI PIKINIKI MĀ TE WHĀNAU KI TĒTAHI WĀHI PAI O KONEI *
 HOPUKIA HE KIRIRIHUA, KO TE TĀONE NUI HEI TUARONGO * MAURIA MAI HE



4 Te Motu o Poutoa

E hia ngā piko o te awa e kite ana koe?



TE KAUNIHERA O HORIZONS? * E OMA, ATU I TE WHAKAPUKEPUKE KI TE ARA MATUA

PRĀRĀUTIHITI ĀNA * E KITE ANA KOE I NGĀ MOTO KĀPOHAU KEREKE?

WĀHANA WĀHANA

ROPU WĀNA I TAUTOKO TE MAHI ONO RĀKAU KI ĒNEI ĀPURE? * HE AHA TE TIKANGA O NGĀ 'RAMA HUAKAHI' KEI TE TONU O

KO WAI TE

7 Te Awa o Manawatū



He aha te tau i whānau mai ai a Pauline Keys?

* E HIA NGĀ ĀPURE URU RĀKAU E KITE ANA KOE? *

