

NoR for KiwiRail Freight Hub

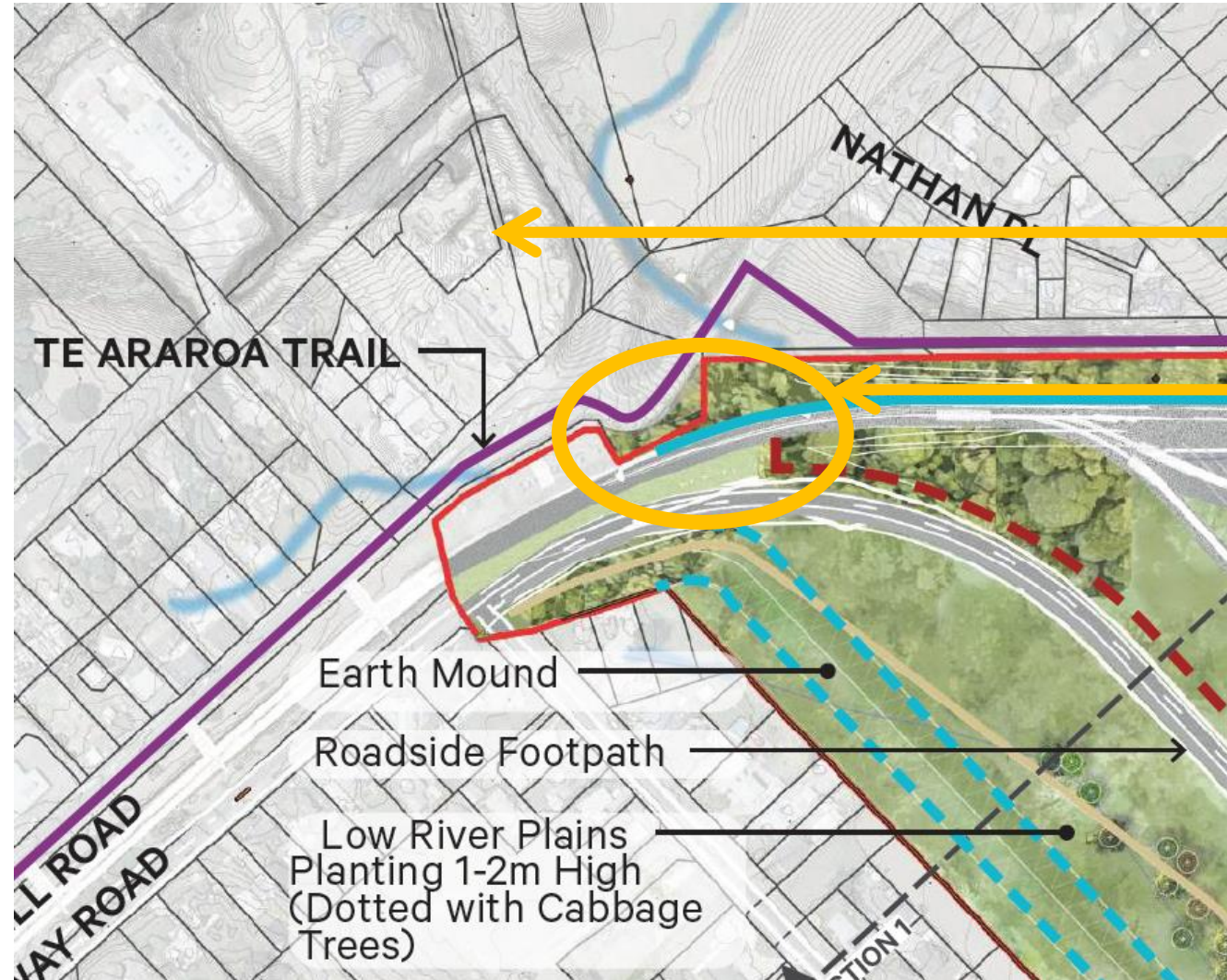
Landscape and visual amenity evidence

Chantal Whitby

Slide 1 Bunnythorpe entrance



Indication of what the wall could look like (noting that this shows a 3m high wall and 2.5m high planted bund, rather than a 5m high wall with planting)



Bunnythorpe township

Potential 5m high wall (indicated by solid blue line)

Bunnythorpe entrance characterised by a railway line wedged between a 5m high wall and a bund.

Slide 2 Naturalised planting

Isthmus.



Tall River Plains Planting

TREES

Includes all feature indigenous trees



kīmahī
Weinmannia racemosa



hīnau
Elaeagnus dentatus



kōhūhū
Pittosporum tenuifolium



māmātu
Platanthus regius



houhere
Haheia populifera



putaputawētā
Carpodacus serratus



mīhōe
Meliccytus ramiflorus



kīnuka
Kunzea ericoides



karamū
Coprosma lucida



kāpuka
Gibberinia littoralis



hangehange
Geniostoma ligustrifolium

SHRUBS



harakeke
Phormium tenax



toetoe
Austroderia fulvida



karoniko
Hebe stricta



rangiora
Brachyglottis repanda

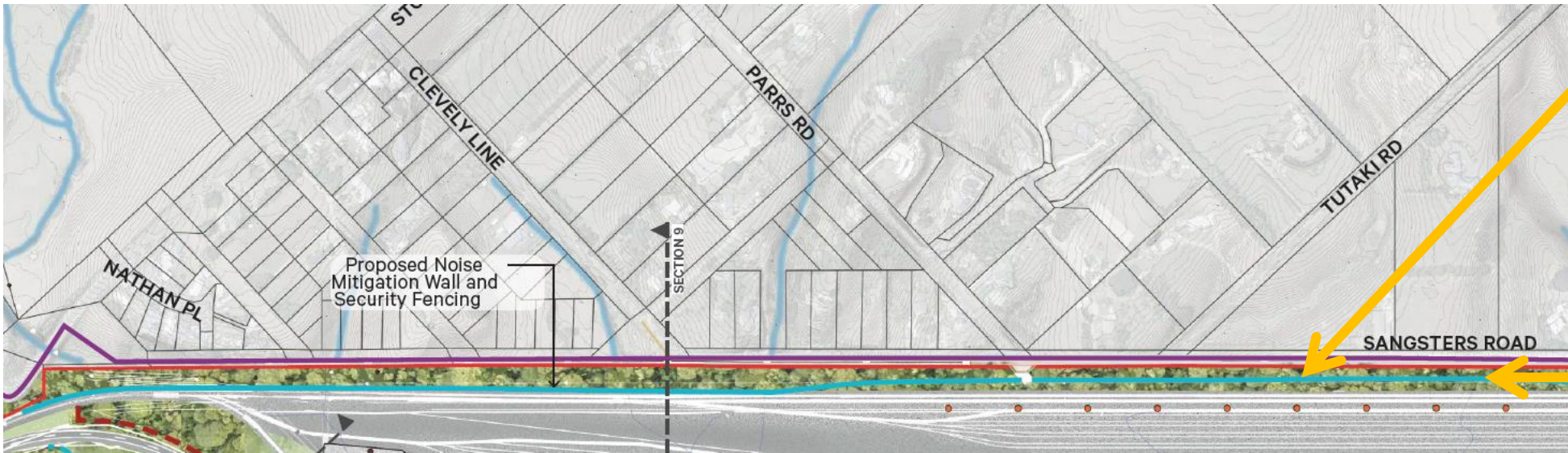


mingimīngi
Coprosma propinqua



mingimīngi
Coprosma rhomboides

Slide 3 Planting along Sangsters Road



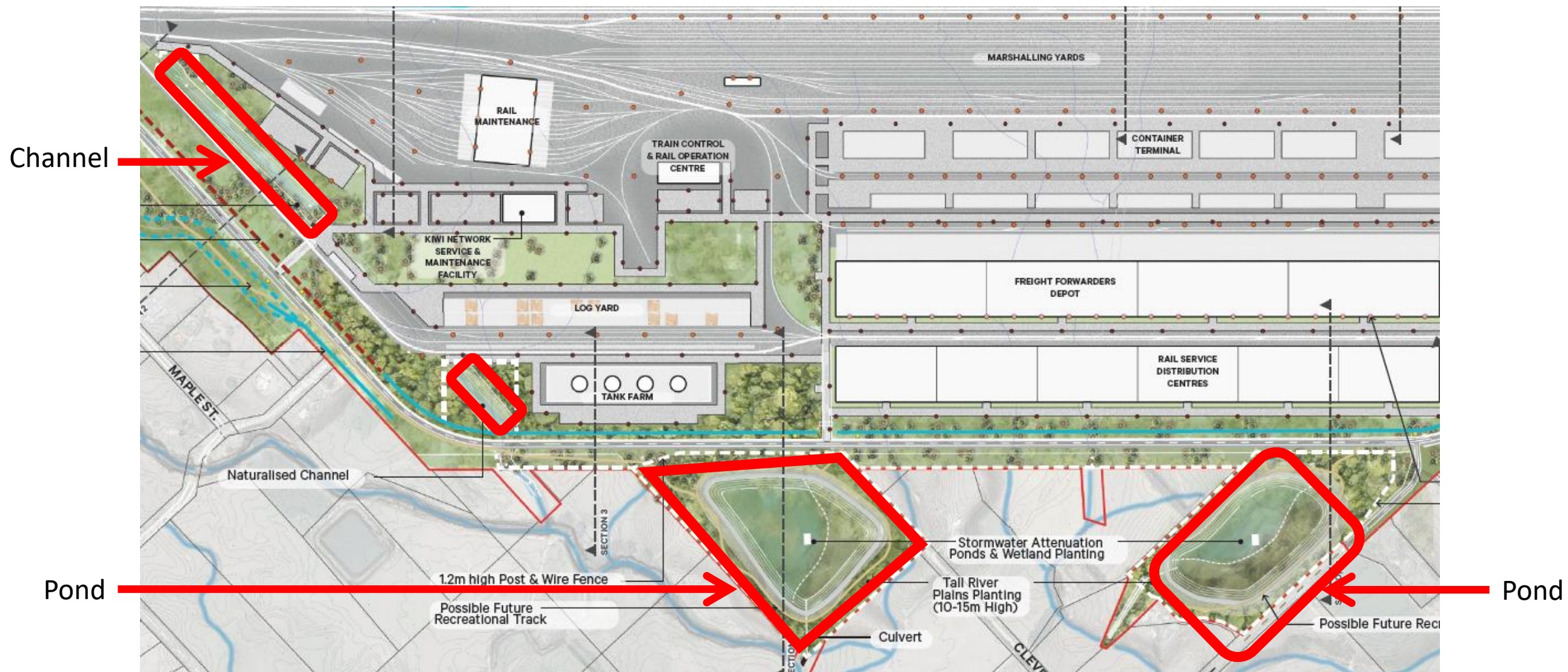
Location of existing NIMT

Proposed mitigation planting

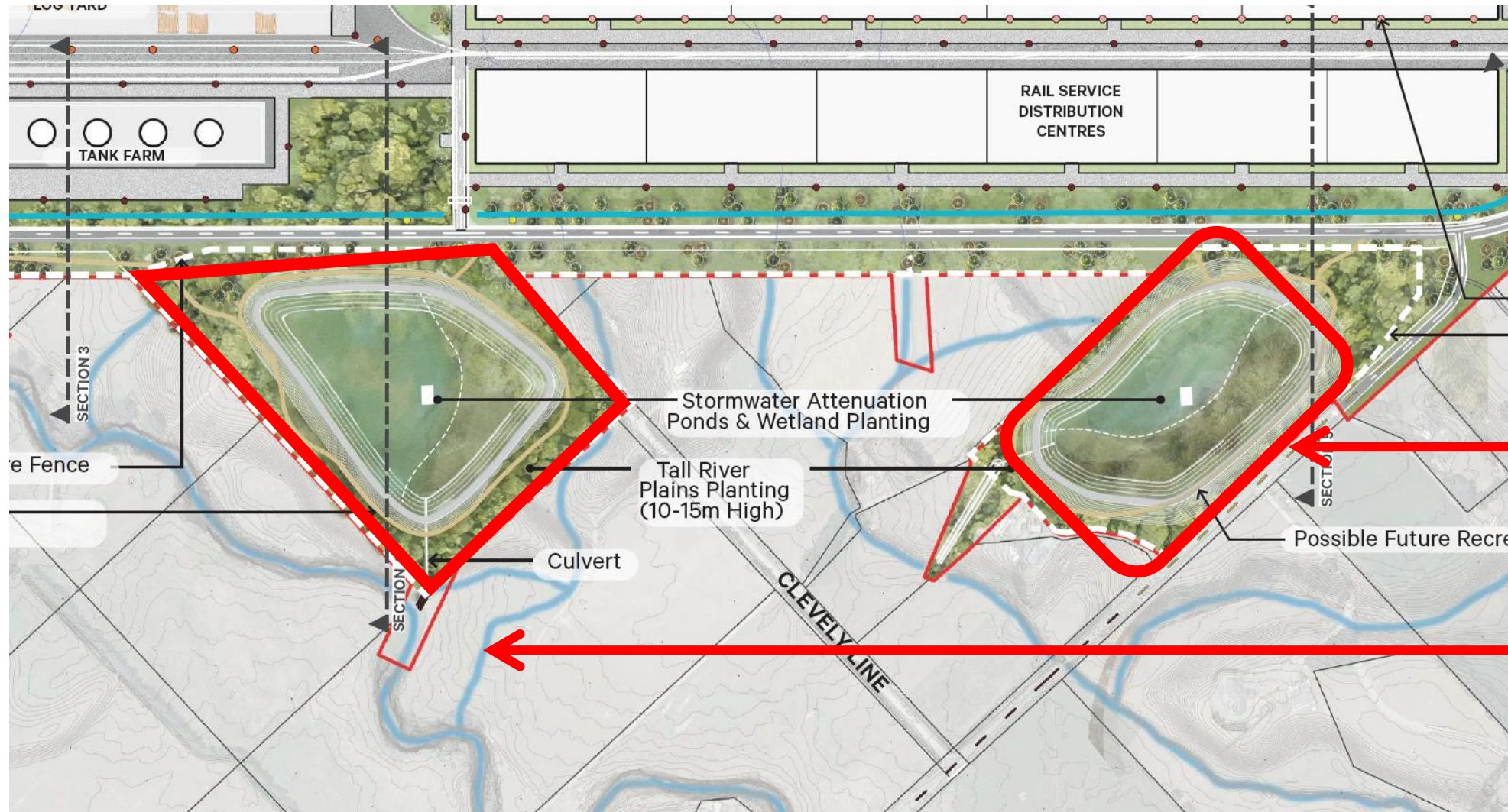
Slide 4 Requirement for visual simulations



Slide 5 'Naturalised channel' and ponds



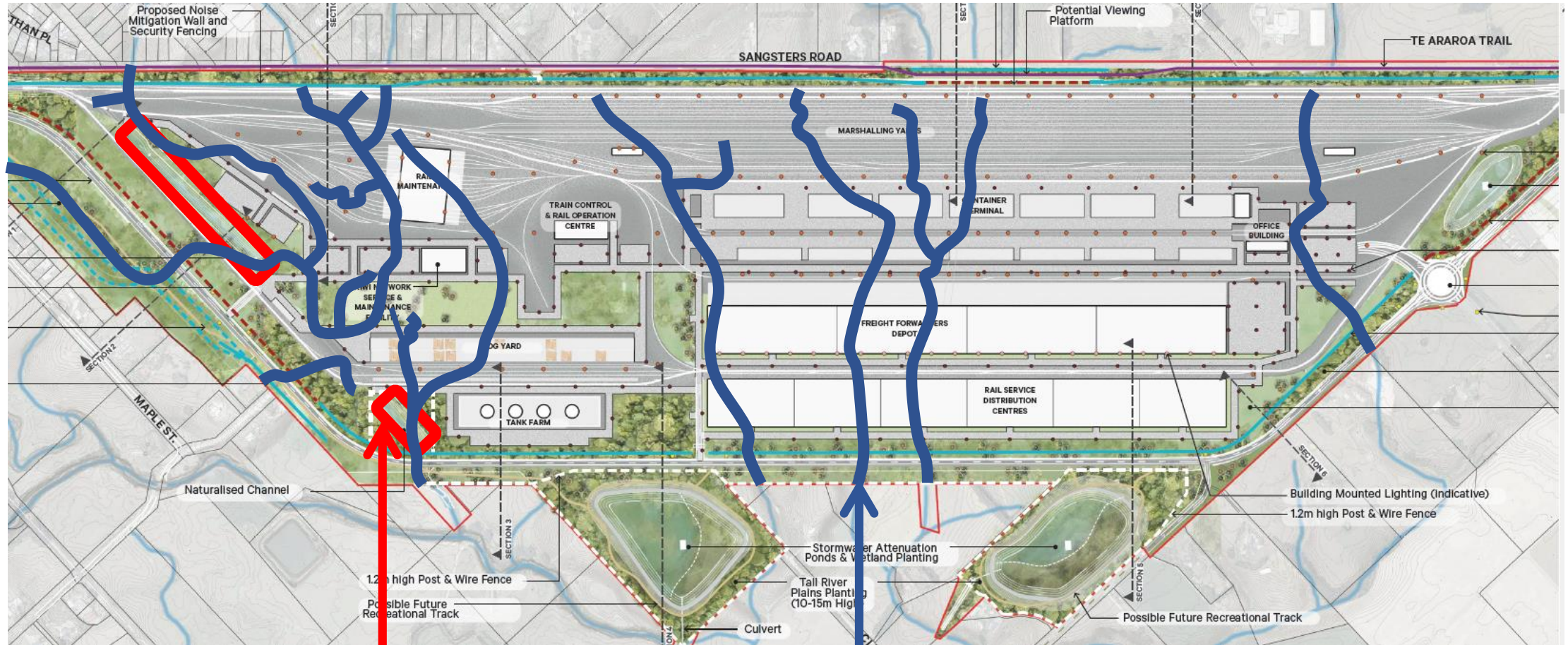
Slide 6 Artificial stormwater ponds



Stormwater pond

Disconnect with tributaries

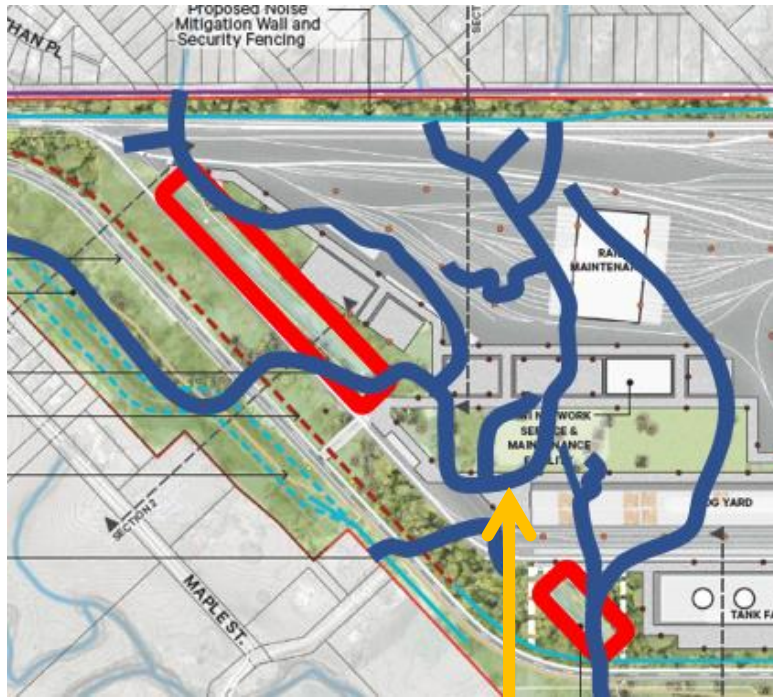
Slide 7 'Naturalised channel' and tributaries



'Naturalised channel'

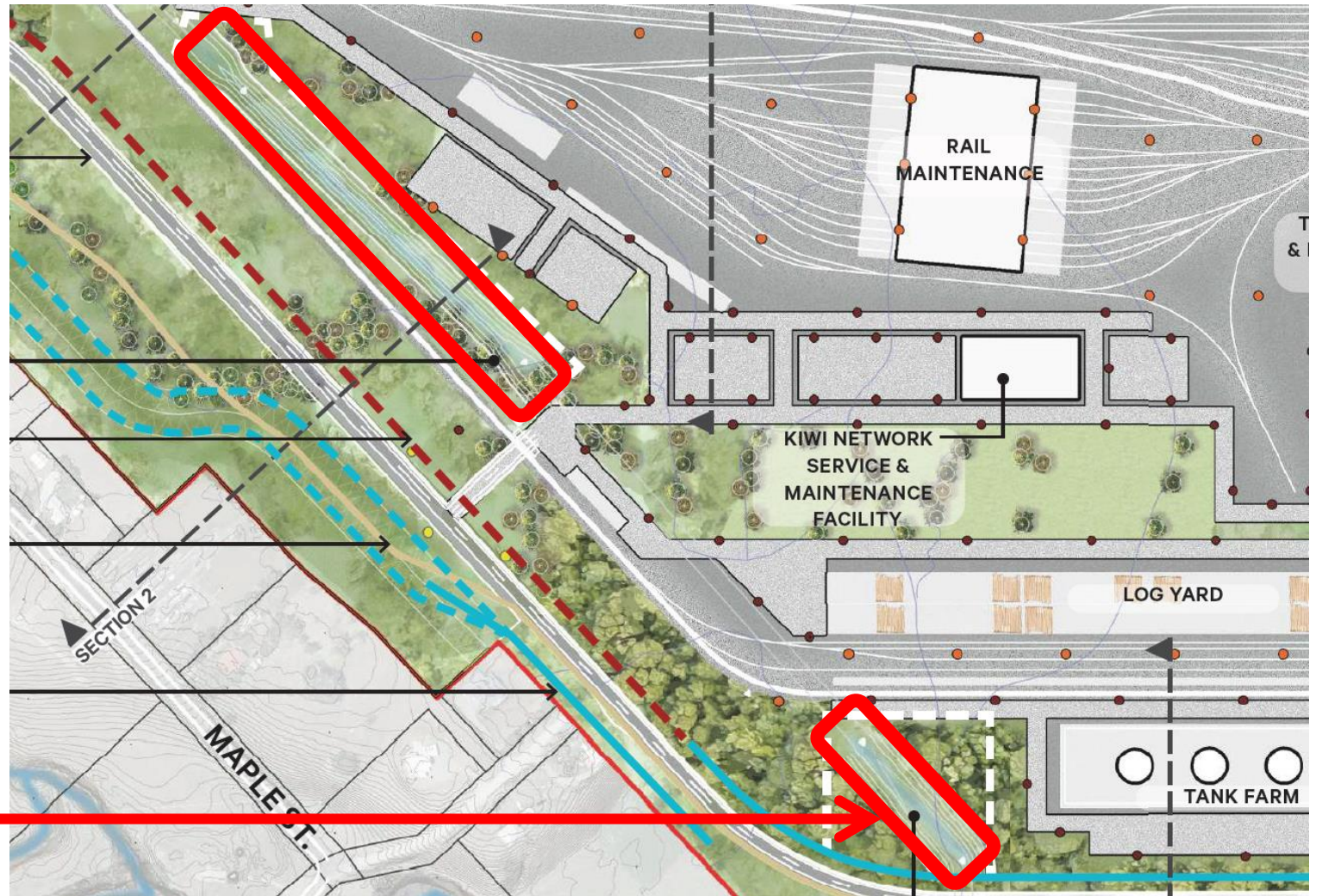
Existing tributaries

Slide 8 'Naturalised channel' confinement



Existing tributary meanders

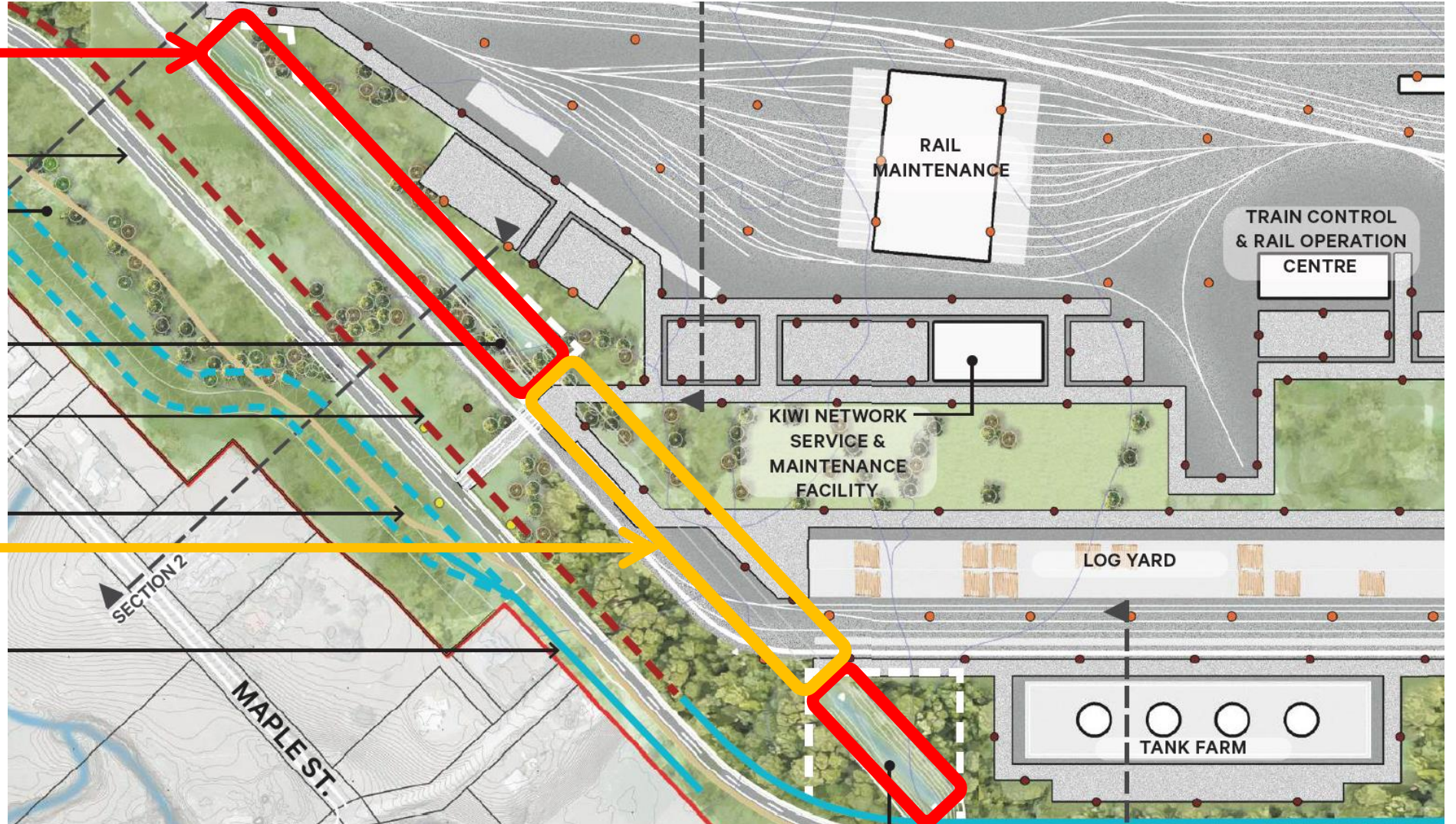
'Naturalised channel'



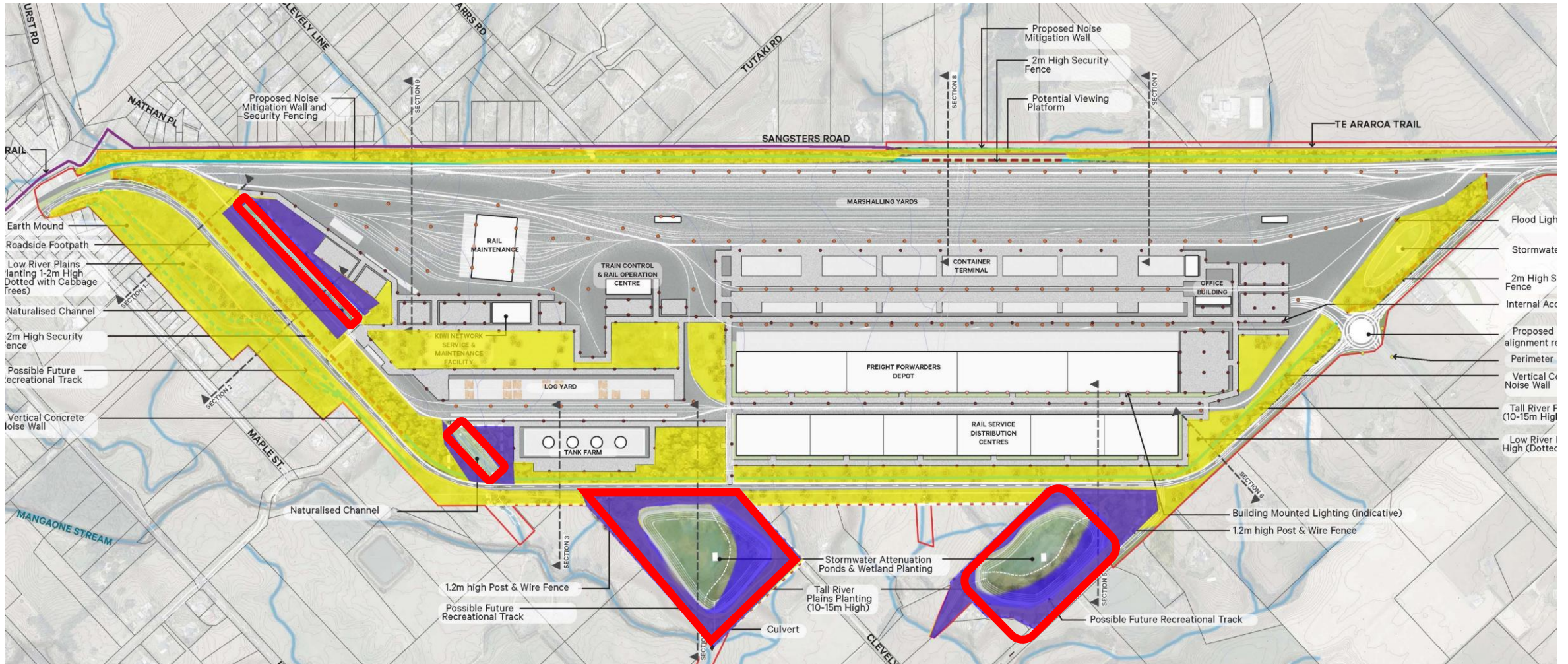
Slide 9 'Naturalised channel' culverted sections

'Naturalised channel'

Culverted section of 'naturalised channel'



Slide 10 Planting in relation to waterbodies



■ Potential planting mitigating natural character

■ Other planting or 'green' areas

Slide 11 Design Framework

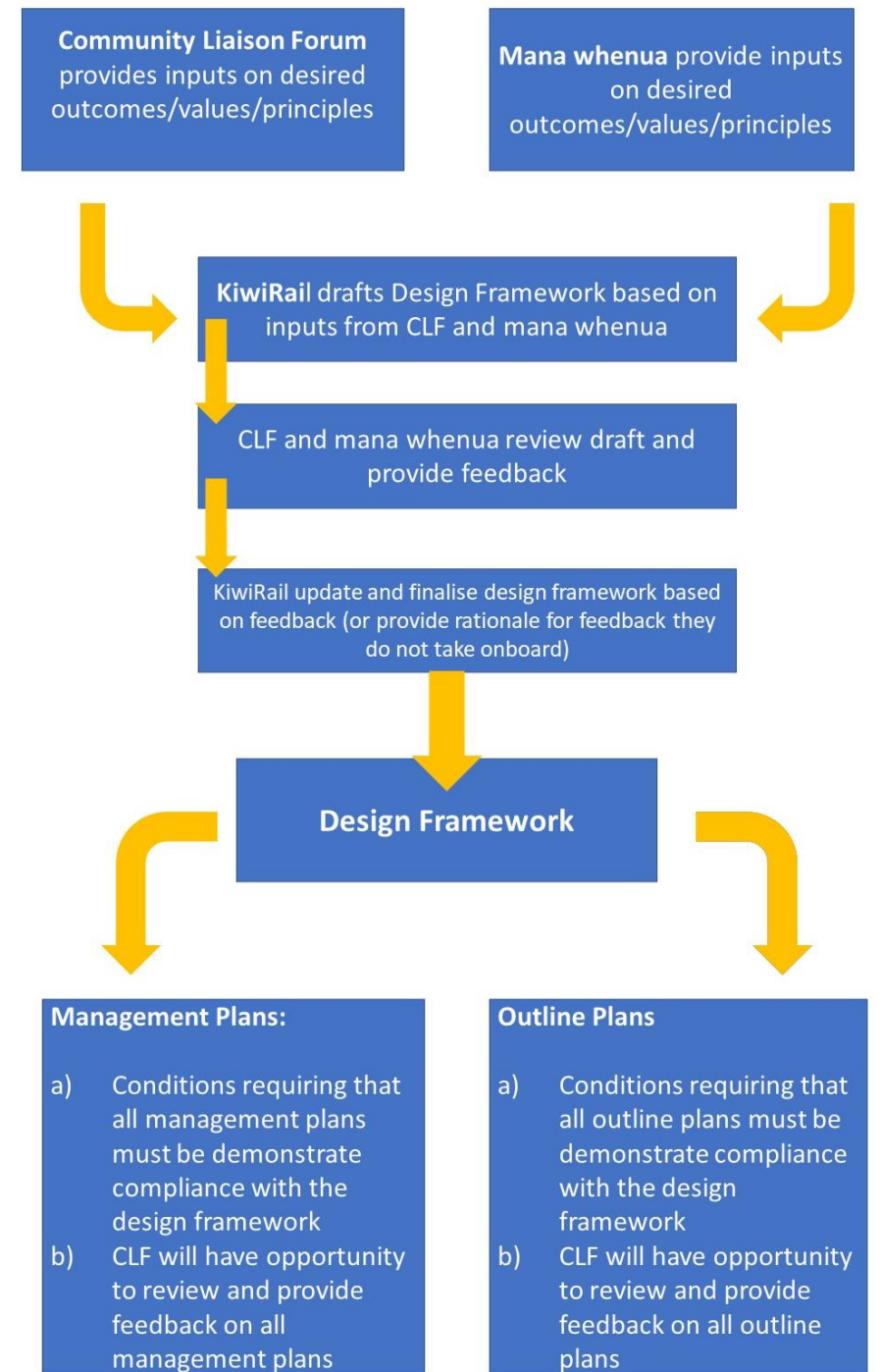


Diagram prepared by Ms Linzey (as appended to her evidence summary)