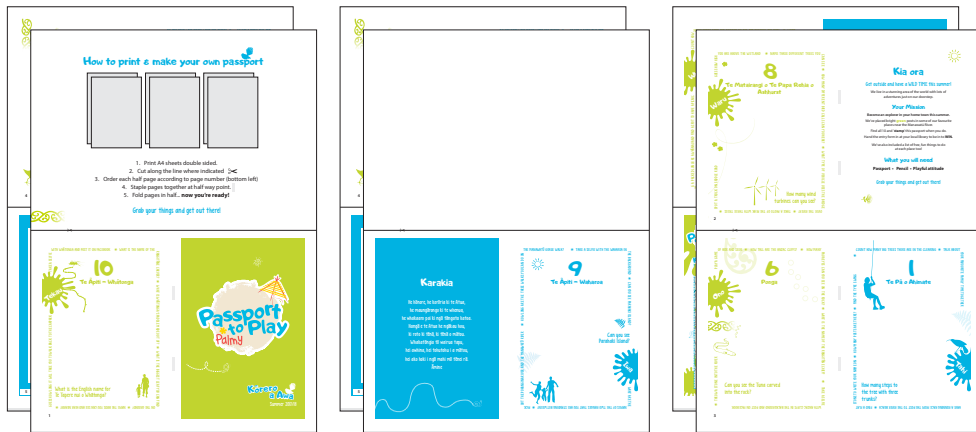




# How to print & make your own passport





1. Print A4 sheets double sided.
2. Cut along the line where indicated 
3. Order each half page according to page number (bottom left)
4. Staple pages together at half way point.
5. Fold pages in half... **now you're ready!**


Grab your things and get out there!



Brought to you by



 [pncc.govt.nz](http://pncc.govt.nz)

 Passport To Play Palmy

Proudly supported by Placemaking Palmerston North

1



**Kōrero a Awa**   
Summer 2017/18



## Karakia

He hōnore, he korōria ki te Atua,  
he maungārongo ki te whenua,  
he whakaaro pai ki ngā tāngata katoa.  
Hangā e te Atua he ngākau hou,  
ki roto ki tēnā, ki tēnā o mātou.  
Whakatōngia tō wairua tapu,  
hei awhina, hei tohutohu i a mātou,  
hei ako hoki i ngā mahi mō tēnei rā.  
Āmine



## Karakia whakamutunga

Kia tau ki a tātou katoa,  
te atawhai o tō tātou Ariki a Ihu Karaiti,  
me te aroha o te Atua,  
me te whiwhinga tahitanga ki te wairua tapu,  
ake, ake, ake,  
Āmine.



"I have laid the foundation of friendship for your consummation."  
"Kua kaupapa i a au te aroha, mā koutou e whakaoti."

Te Pēti Te Awe Awe (Rangitāne Chief)



## More FREE fun



16 Blow on a dandelion & make a wish	17 Tell stories around a campfire	18 Play pool sticks from a bridge	19 Climb a tree
20 Plant something & watch it grow	21 Sleep out under the stars	22 Learn to spot some native plants & animals	23 Bike over a ramp
24 Play sky spy	25 Hit a target using mud & a spoon	26 Make a sand angel	27 Follow an animal or its tracks
28 Jump in some wild water	29 Hold a scary bug in your hand	30 Play in the moonlight	

palmydirty30.weebly.com



2



## Kia ora

Get outside and have a WILD TIME this summer!

We live in a stunning area of the world with lots of adventures just on our doorstep.

### Your Mission

Become an explorer in your home town this summer.

We've placed bright **green** posts in some of our favourite places near the Manawatū River.

Find all 10 and 'stamp' this passport when you do.  
Hand the entry form in at your local library to be in to **WIN**.

We've also included a list of free, fun things to do at each place too!

### What you will need

Passport • Pencil • Playful attitude

Grab your things and get out there!



WITH WHĀTONGA AND POST IT ON FACEBOOK \* WHAT IS THE NAME OF THE RANGITANE CARVER? \* WHAT IS WHĀTONGA'S PADDLE MADE OUT OF? \* WHAT IS THE BIGGEST LEAF YOU CAN FIND ON THE GROUND? \* NAME THE BIRDS YOU CAN SEE AND HEAR NEARBY \*

TAKE A SELFIE

**10**

Te Āpiti - Whātonga

**Tekau**

WHAT IS THE ENGLISH NAME FOR Te Tapere nui o Whātonga?

GUESS HOW LONG IT WILL TAKE YOU TO WALK BACK TO THE CARPARK

3

COUNT HOW MANY BIG TREES THERE ARE IN THE CLEARING \* TALK ABOUT

\*

STONE TO WRITE YOUR NAME ON \* HOW MANY POSTS ARE THERE? \* FIND THE TYRE SWING



**1**

Te Pā o Ahimate

YOUR FAVOURITE FAMILY TIME TOGETHER

How many steps to the tree with three trunks?

HAVE A RUNNING RACE FROM THE POST TO THE RIVER BEACH \* FIND A FLAT



# Tōku Pepeha



Ko \_\_\_\_\_ taku ingoa (my name)  
 Ko \_\_\_\_\_ taku matua (my father)  
 Ko \_\_\_\_\_ taku whaea (my mother)  
 Ko \_\_\_\_\_ taku tuakana (my older siblings)  
 Ko \_\_\_\_\_ taku teina (my younger siblings)  
 Ko \_\_\_\_\_ taku kura (my school)  
 Ko \_\_\_\_\_ taku maunga (my mountain)  
 Ko \_\_\_\_\_ taku awa (my river)  
 Ko \_\_\_\_\_ taku waka (my canoe/transport to NZ)  
 Ko \_\_\_\_\_ taku hapū (my sub-tribe)  
 Ko \_\_\_\_\_ taku marae (my marae)  
 Ko \_\_\_\_\_ tōku iwi (my ethnicity)

## Te Pepeha o Rangitāne o Manawatū

Ko Tatarua rāua ko Ruahine ngā pae maunga  
 Ko Kurahaupō te waka  
 Ko Manawatū te awa  
 Ko Rangitāne o Manawatū te iwi



# FREE fun

The Palmy Dirty 30 is 30 fun, FREE things to do in the great outdoors this summer.  
 Can you tick off all 30 while getting your passport stamps?



1 Collect some natural treasures	2 Cook and eat outside	3 Try to kiss a frog	4 Ride down a really big hill
5 Swing under a tree	6 Have a water fight	7 Build a dam	8 Go fruit picking
9 Slide down a slide in the rain	10 Stop & smell the flowers	11 Create a work of rock art	12 Brew a stinky magic potion
13 Balance along a log	14 Skim a stone	15 Build a sandcastle with a moat	



DRAW YOUR NAME IN THE LIMESTONE PATH

\* FIND THE HUIA ON

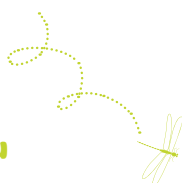
THE WAKA SCULPTURE \* CAN YOU SPOT A DUCK ON THE WATER?

\* COUNT HOW MANY TOTI ON THE

OTHER SIDE OF THE RIVER

# 2

Waka/Tauihu



\* ROLL DOWN THE STOPBANK

How many steps are on the landing?

\* TAKE A SELFIE AND POST IT ON FACEBOOK



THE MANAWATŪ GORGE WALK?

\* TAKE A SELFIE WITH THE WAHAROA IN

THE BACKGROUND \* CAN YOU SEE PARAHAKI ISLAND?



# 9

Te Āpiti - Waharoa



Can you see Parahaki Island?

OUT THE POHANGINA RIVER AND THE MANAWATŪ RIVER

\* PICK



NAMES OF THE TWO RANGES THAT YOU ARE STANDING BETWEEN?



WHAT ARE THE

YOU ARE ABOVE THE WETLAND \* NAME THREE DIFFERENT TREES YOU

GUESS HOW HIGH



8

Te Matairangi o Te Papa Rehia o  
Ashhurst

Waru

SPOT A TRUCK ON SADDLE ROAD

4

CAN SEE \* HOW MANY DIFFERENT BIRD CALLS CAN YOU HEAR? \* WHAT TYPE OF VEHICLE USES THE BRIDGE



How many wind  
turbines can you see?

OVER THE RIVER? \* TAKE A PHOTO OF THE PEAK WITH THREE TREES

DO YOU KNOW THE MAORI WORD FOR RIVER? \* GO FOR A BUSHWALK AND

LOOK OUT FOR PALMY ROCKS

3



He Ara Kotahi

COUNT HOW MANY CABINS AT THE HOLIDAY PARK \* HOW MANY CYCLISTS CAN YOU SEE? \*

GROUND \* HOW WIDE IS THE RIVER? \* TAKE A SELFIE WITH THE RIVER IN THE BACK



Can you see where the new  
bridge is to be located?



PLAY A GAME OF HIDE AND SEEK \* HOW TALL ARE THE ANZAC CLIFFS? \* HOW MANY

PAUA EYES CAN YOU SEE ON THE ROCK? \* WHAT IS THE NAME OF THE RANGITĀNE CHIEF? \* TAKE A SELFIE

6

Ponga



WITH ANZAC CLIFFS IN THE BACKGROUND AND POST ON FACEBOOK

\* THROW A STONE INTO THE RIVER

Can you see the Tuna carved  
into the rock?

5

\* WHAT YEAR DID THE SAWMILLER BUY THE LAND FROM RANGITĀNE? \*

POINT IN THE DIRECTION OF THE RIVER

5

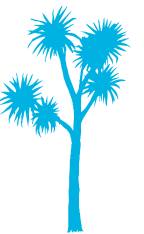
Hokowhitu Lagoon

TAKE A SELFIE ON THE BRIDGE \* WHEN WAS THE BRIDGE INSTALLED? \* CAN YOU SEE ANY GEESE? \*



How many cabbage  
trees are on the island?

TELL YOUR FAVOURITE JOKE



## 4

### Te Motu o Poutoa

COUNT HOW MANY STAIRS FROM THE BOTTOM TO THE TOP THROUGH THE BUSH \* WHAT

G A PACKED LUNCH AS A WHĀNAU AND FIND A SPOT TO HAVE A PICNIC

BRING A WHĀNAU AND FIND A SPOT TO HAVE A PICNIC

WHAT DO THE TRAFFIC LIGHTS MEAN ON THE HORIZONS SIGN?

WHAT ARE THE TALL BUILDINGS CAN YOU SEE?

WOULD HAVE BEEN THE ADVANTAGE OF A PĀ SITE AT THIS HEIGHT?

How many bends in the river can you see?

## 7

### Te Awa o Manawatū

WHICH GROUP SPONSORED THE PLANTING AREAS?

KICK A BALL

AROUND

CAN YOU SEE THE DIFFERENT TYPES OF WIND TURBINES?

HAVE A RUNNING RACE FROM THE STOPBANK TO THE MAIN PATHWAY

WHAT DO THE TRAFFIC LIGHTS MEAN ON THE HORIZONS SIGN?

What year was Pauline Keys born?

## Passport to Play

### Palmy Kōrero a Awa

## Ashhurst

1. Te Pā o Ahimate
2. Waka / Taihu
3. He Ara Kotahi
4. Te Motu o Poutoa
5. Hokowhitu Lagoon
6. Ponga

7. Te Awa o Manawatū
8. Te Matairangi o Te Papa Rēhia o Ashhurst
9. Te Apiti - Waharoa
10. Te Apiti - Whātonga