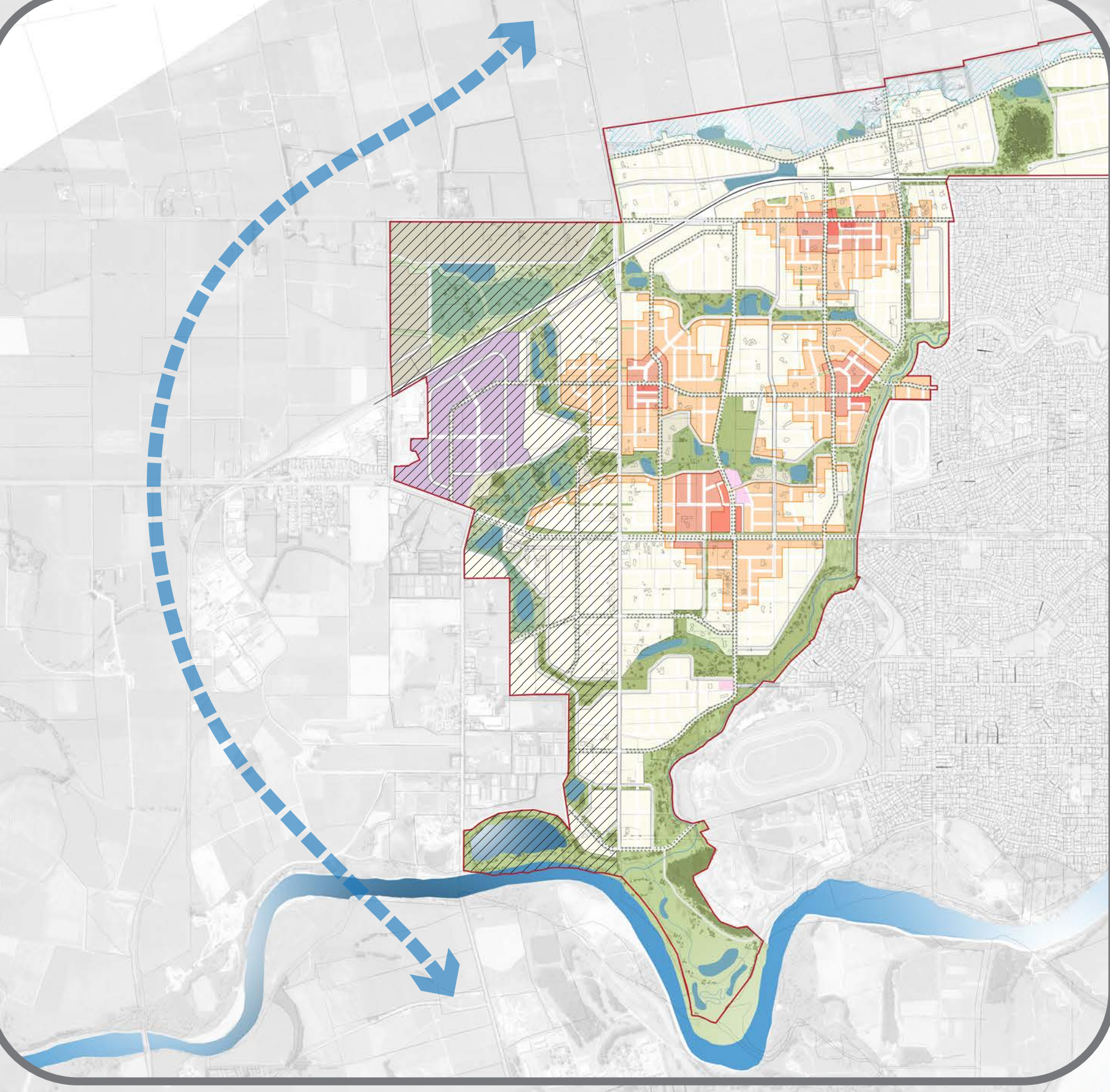
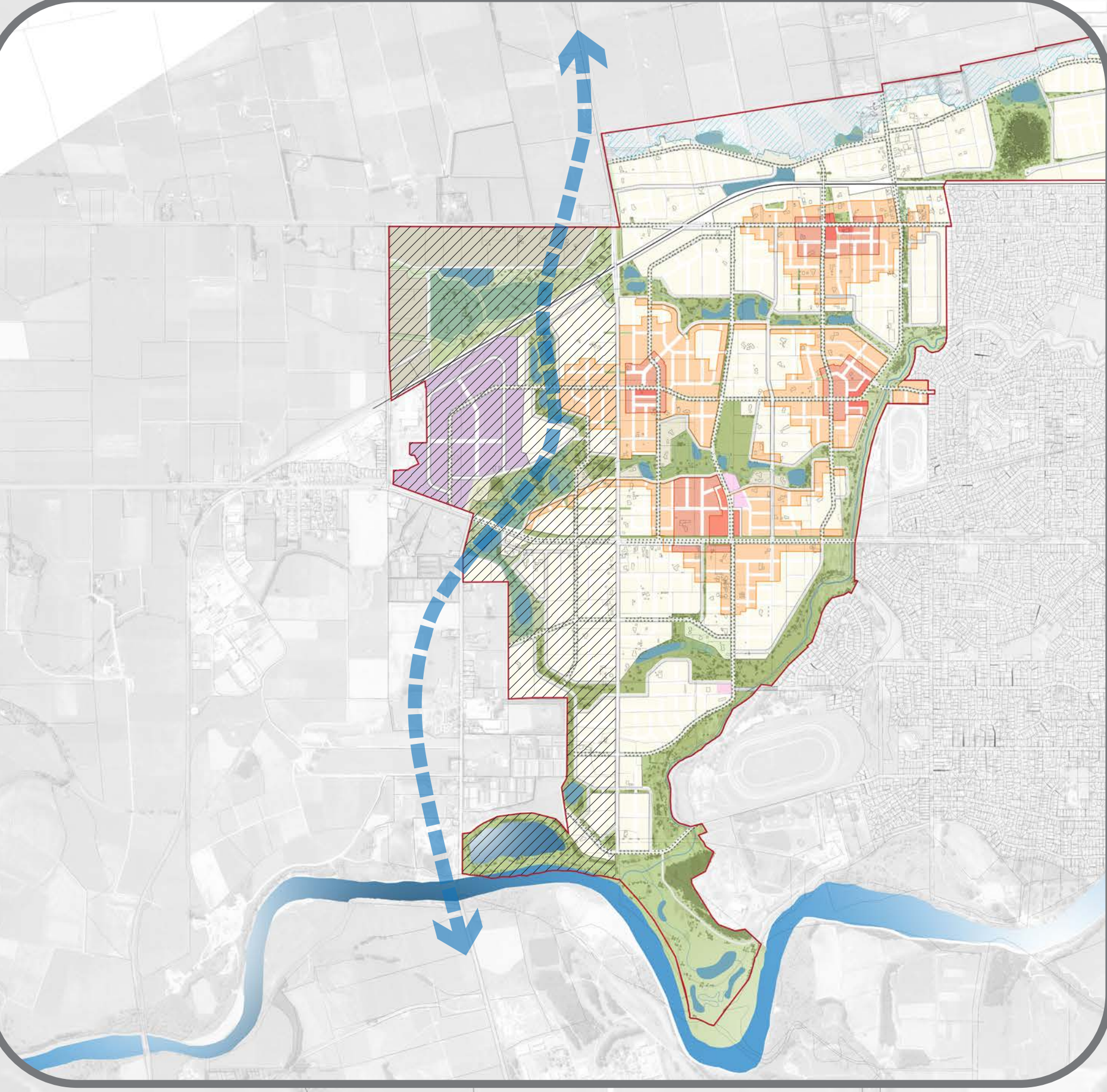
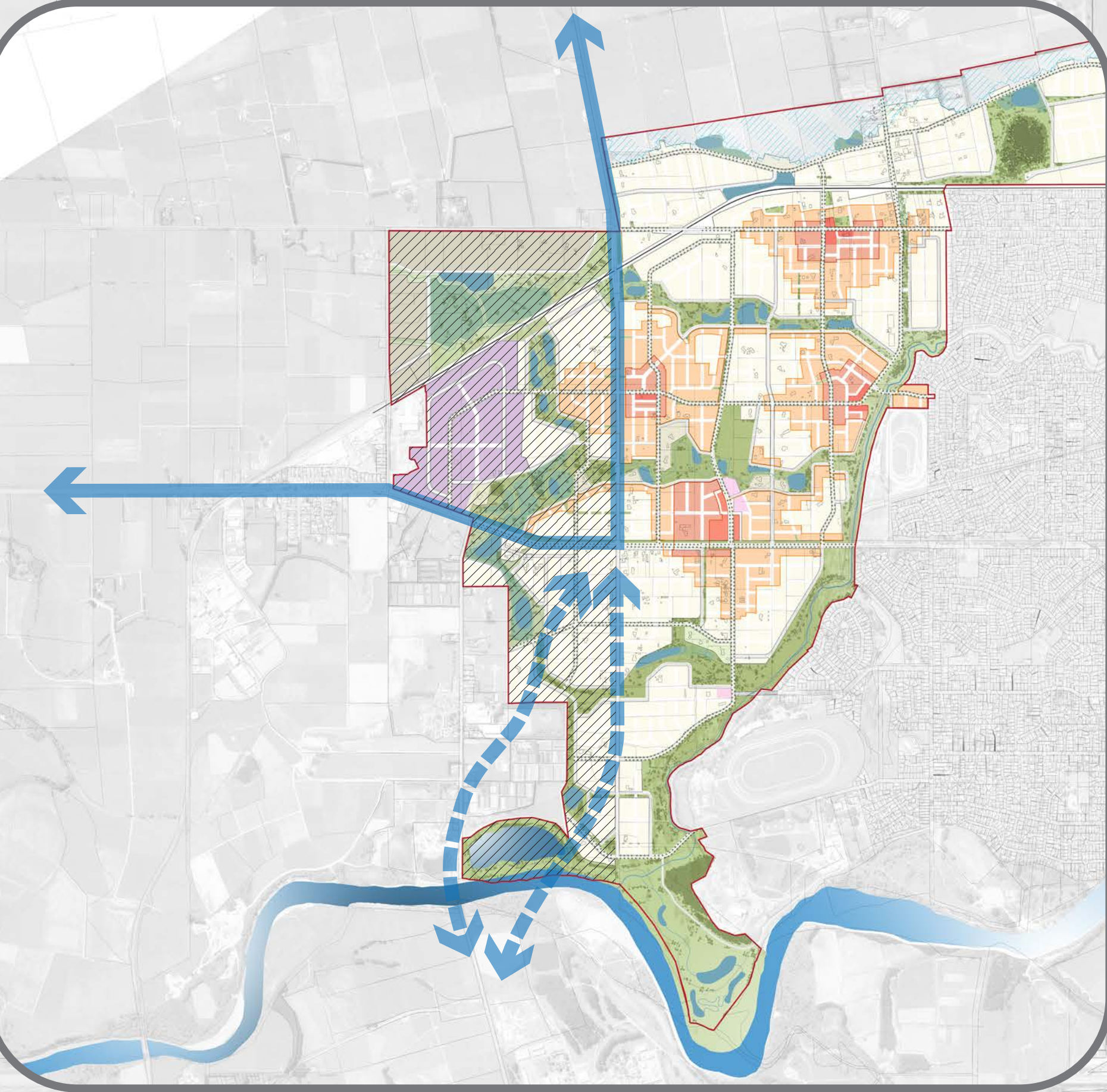


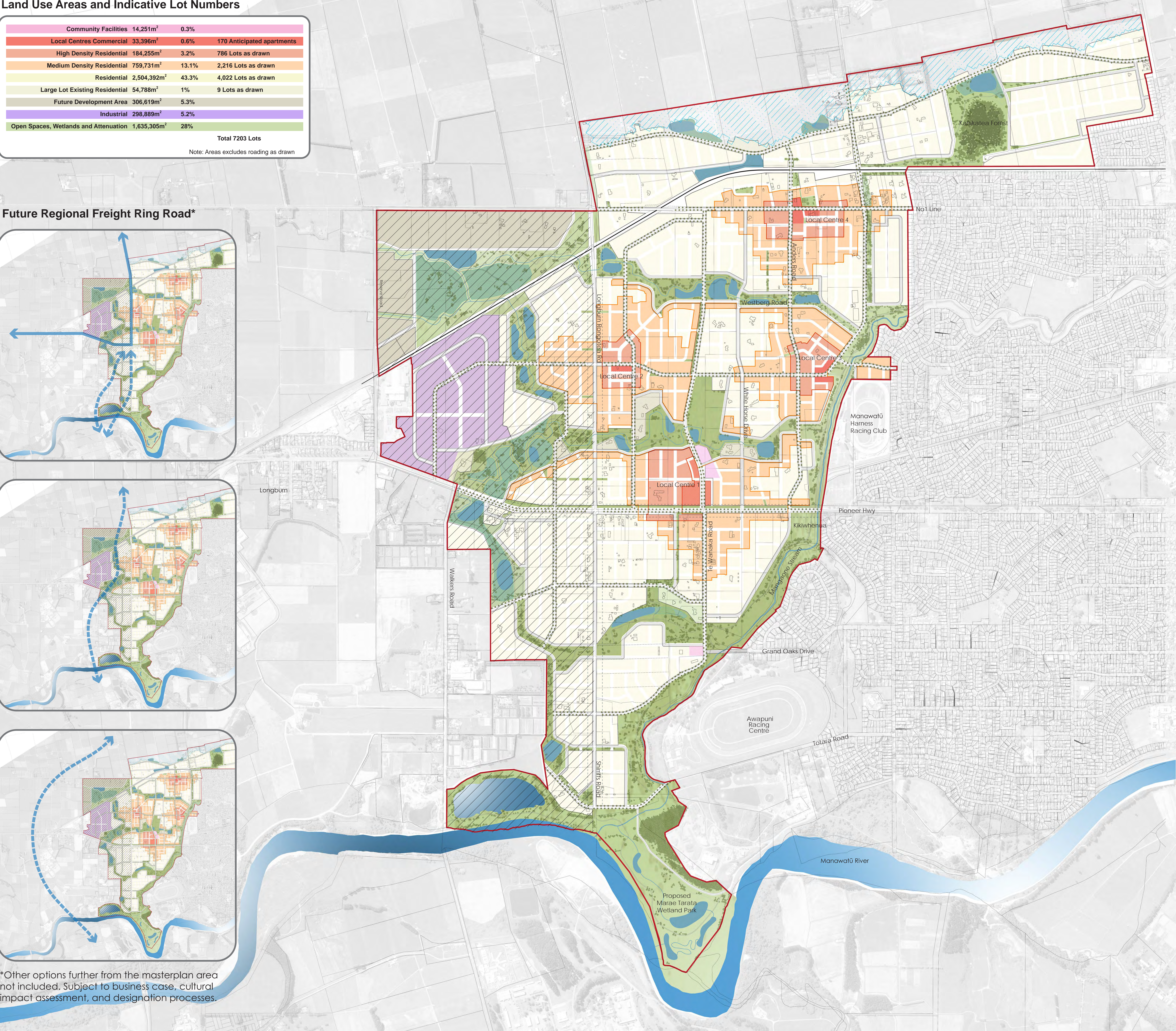
Land Use Areas and Indicative Lot Numbers

Community Facilities	14,251m <sup>2</sup>	0.3%	
Local Centres Commercial	33,396m <sup>2</sup>	0.6%	170 Anticipated apartments
High Density Residential	184,255m <sup>2</sup>	3.2%	786 Lots as drawn
Medium Density Residential	759,731m <sup>2</sup>	13.1%	2,216 Lots as drawn
Residential	2,504,392m <sup>2</sup>	43.3%	4,022 Lots as drawn
Large Lot Existing Residential	54,788m <sup>2</sup>	1%	9 Lots as drawn
Future Development Area	306,619m <sup>2</sup>	5.3%	
Industrial	298,889m <sup>2</sup>	5.2%	
Open Spaces, Wetlands and Attenuation	1,635,305m <sup>2</sup>	28%	
Total 7203 Lots			
Note: Areas excludes roading as drawn			

Future Regional Freight Ring Road\*



\*Other options further from the masterplan area not included. Subject to business case, cultural impact assessment, and designation processes.



Key

Wetland

Stream

Attenuation

Shared Path

Flood Zone

Future Open Space

Community Facilities

Mixed-Use Local Centre

Future Development Area

Industrial

Residential  
(Average dwellings per ha. net)

Low Density (10-15)

Medium Density (Min. 30)

High Density (Min. 40)

Impacted by Future Regional Freight Ring Road

Noise setback (Min. 30m)



North

1

Scale

1:5000@2xA0

Issued For

Information

Job Number

1912-1108

Revision

A

Project

Kākatangiata

Drawing Title

Illustrative Masterplan

SK221103