



PALMNY<sup>TM</sup>  
PAPAIOEA  
PALMERSTON  
NORTH  
CITY

# TE MOTU O POUTOA CIVIC MARAE AND CULTURAL CENTRE

HONOURING THE PAST.  
WELCOMING THE FUTURE.





**He rourou na takitini, e ora te ope haere**

**The food basket provided by the many  
enables the group to travel (or move  
forward) in health and well-being**

Te Motu o Poutoa, known to many as Anzac Park, is a place of immense historical, cultural, and environmental significance to Palmerston North and Rangitāne o Manawātū. Sitting high above the Manawātū river, this site has long been a place of reflection, connection, and remembrance. Now, a new chapter is beginning.

As part of our Long-Term Plan, we are working in partnership with Rangitāne o Manawātū to develop a civic marae and cultural centre at Te Motu o Poutoa. This once-in-a-generation project will restore the mana of the site and create a unique public destination — one that honours its past while offering all of us a place to gather, learn, and celebrate together. And one that attracts local, domestic and international visitors.

Te Motu o Poutoa is a recognised wāhi tapu (sacred site), with ancestral links that stretch back centuries. The land was once home to Chief Poutoa, after whom the site is named, and it remains of great cultural and spiritual importance to Rangitāne o Manawātū. For many in our community, it's also a site of remembrance, where generations have come to mark Anzac Day and reflect on those who served and fell.

In 2019, Palmerston North City Council and Rangitāne o Manawātū entered into a formal co-management agreement to ensure the protection, preservation, and appropriate development of this special place. Together, we are now taking the next step in this partnership — creating a space that acknowledges the past while welcoming the entire community.

# What's planned

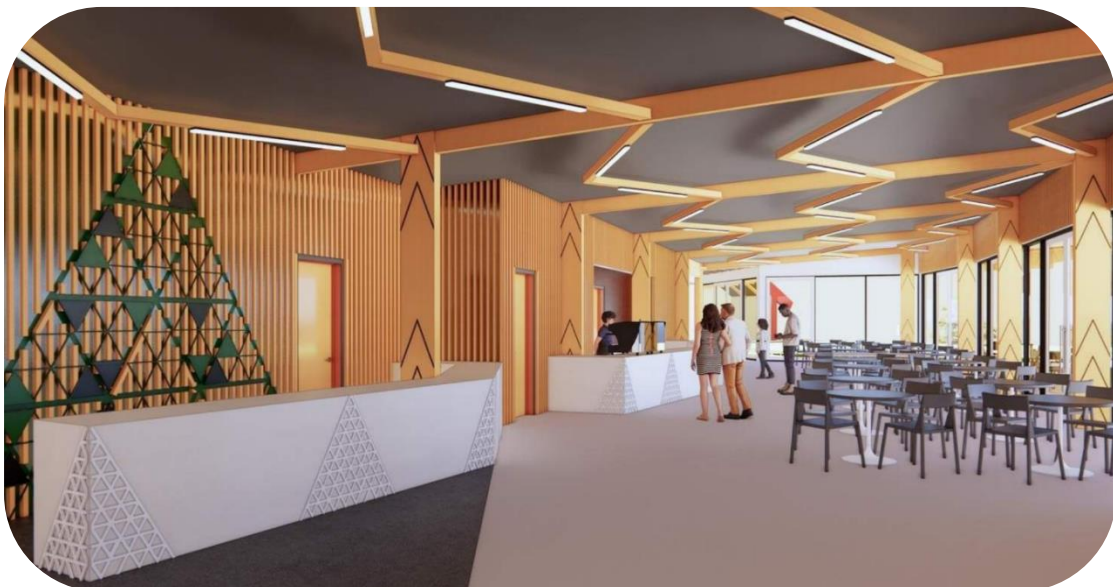
The planned Te Motu o Poutoa Civic Marae and Cultural Centre will be a first for Palmerston North. Everyone will be welcome — from local whānau and schools, to manuhiri (guests) from around the motu and beyond. We are planning an exciting, popular and well sought-after experience.

The 1000m<sup>2</sup> facility will include:

- A civic marae for cultural and civic ceremonies
- A public café with views over the Manawatū
- Education and gallery spaces for schools and visitors
- Meeting rooms and event spaces for community and business use
- Potential for New Zealand's best overnight stay experiences for manuhiri (schools and groups)
- Destination retail showcasing the region's history, and high-quality art, contemporary craft and taonga
- Fabulous tour and dining experiences for New Zealanders and international visitors
- Unique education programmes and tours co-packaged across the region
- Easy access for guests with a directly adjacent car park, bus drop off zone, and accessible parking.

The centre will enhance Te Motu o Poutoa as a key destination in the Manawatū River Framework — our city's long-term vision to reconnect people with the awa (river) and surrounding landscapes. The development also complements nearby projects like He Ara Kotahi and the Hei Ara Kōrero project.

The retail space will offer unique items much like those found at Te Papa or Zealandia — special pieces perfect for gifts, visitors, or your own home — while supporting local artists and businesses and contributing to the region's economy.





This is a significant civic investment, designed to benefit future generations. The project is expected to progress between late 2025 and 2027, subject to external funding and regulatory approvals.

Funding for the project is coming from a range of project partners including Rangitāne Settlement Trust and Palmerston North City Council.

Council will also upgrade Cliff Road (the main access to the site).



# Why it matters

This project is about more than buildings. It's about bringing people together — to learn, connect, and experience the richness of our shared stories. It's about respecting the past, providing for the present, and building a place of meaning for future generations. And very importantly, it will be a lively and fun place to be, irresistible to locals and visitors.

He iti rā, he iti pounamu – Small city benefits, big city ambition.

Te Motu o Poutoa Civic Marae and Cultural Centre will be a shining example of that ambition — grounded in tikanga, guided by partnership, and open to all.

