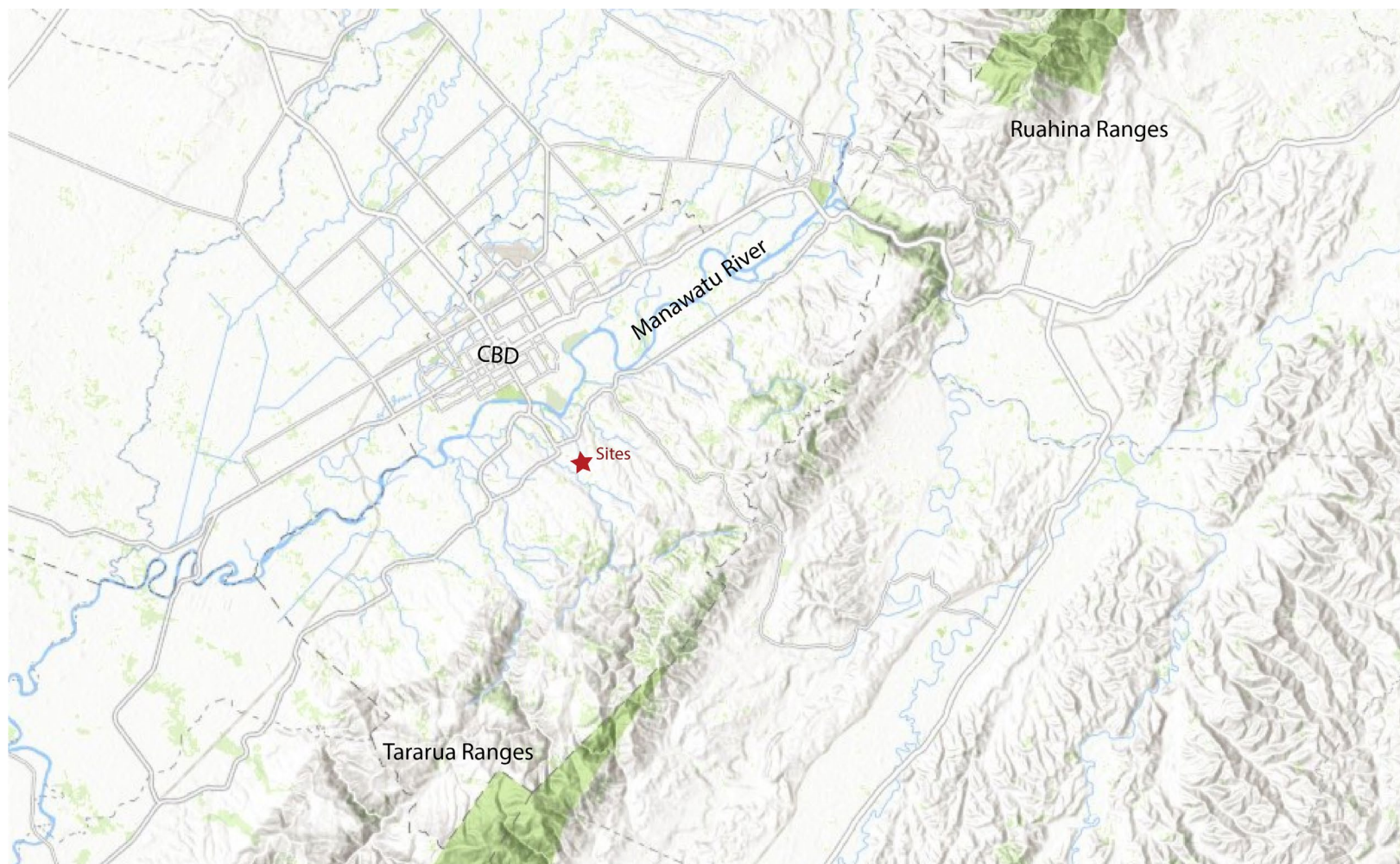


NoR for Abby Rd – Johnstone Dr Extension

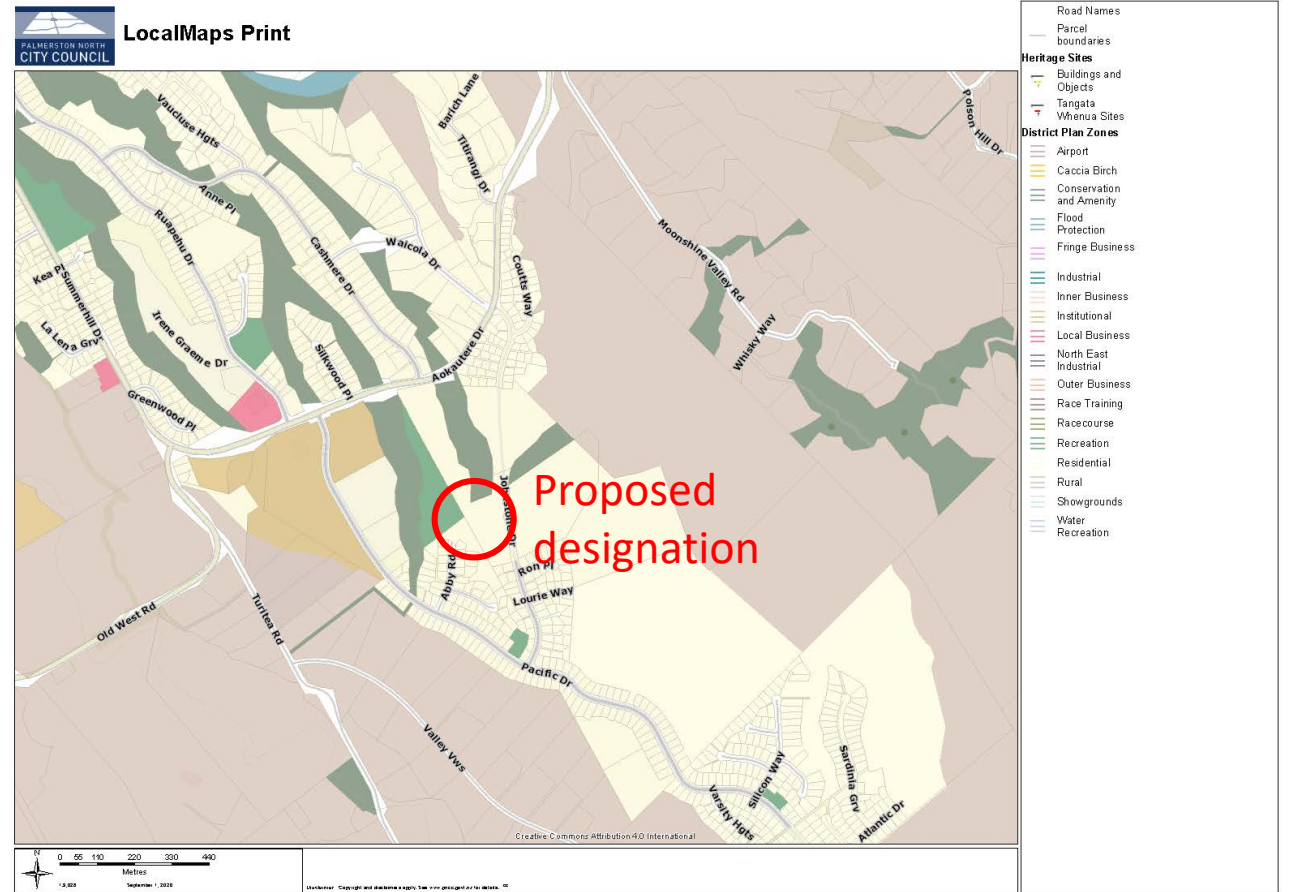
Landscape evidence

Chantal Whitby

# Slide 1 Site location with wider context



# Slide 2 Site location



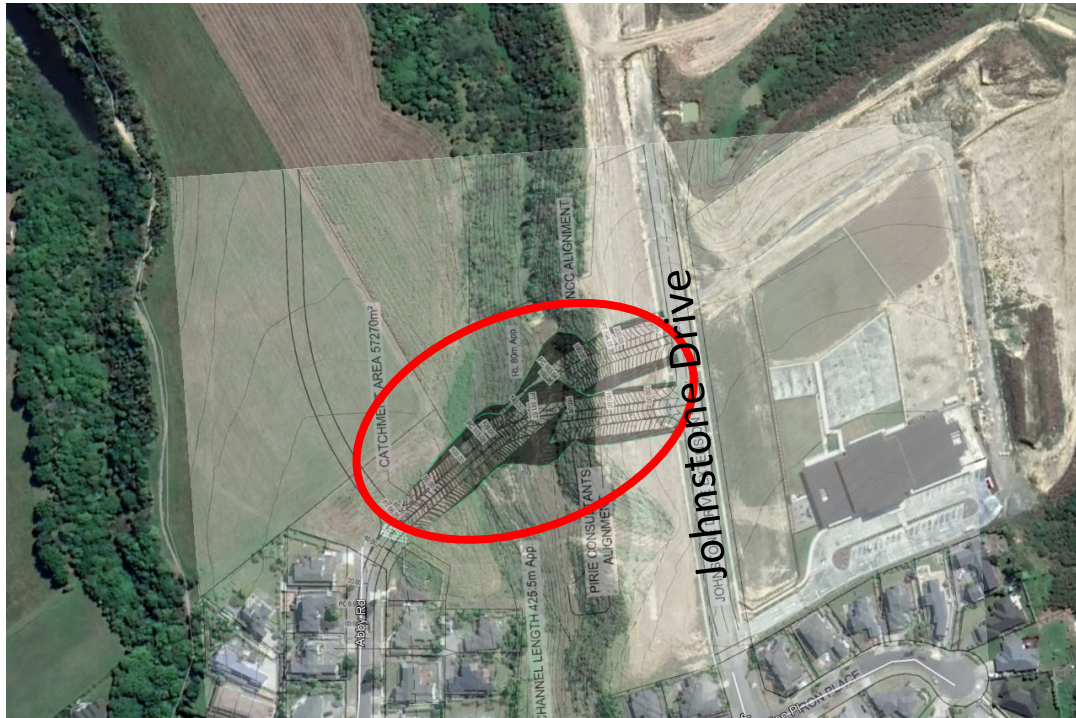
# Slide 3 Site location



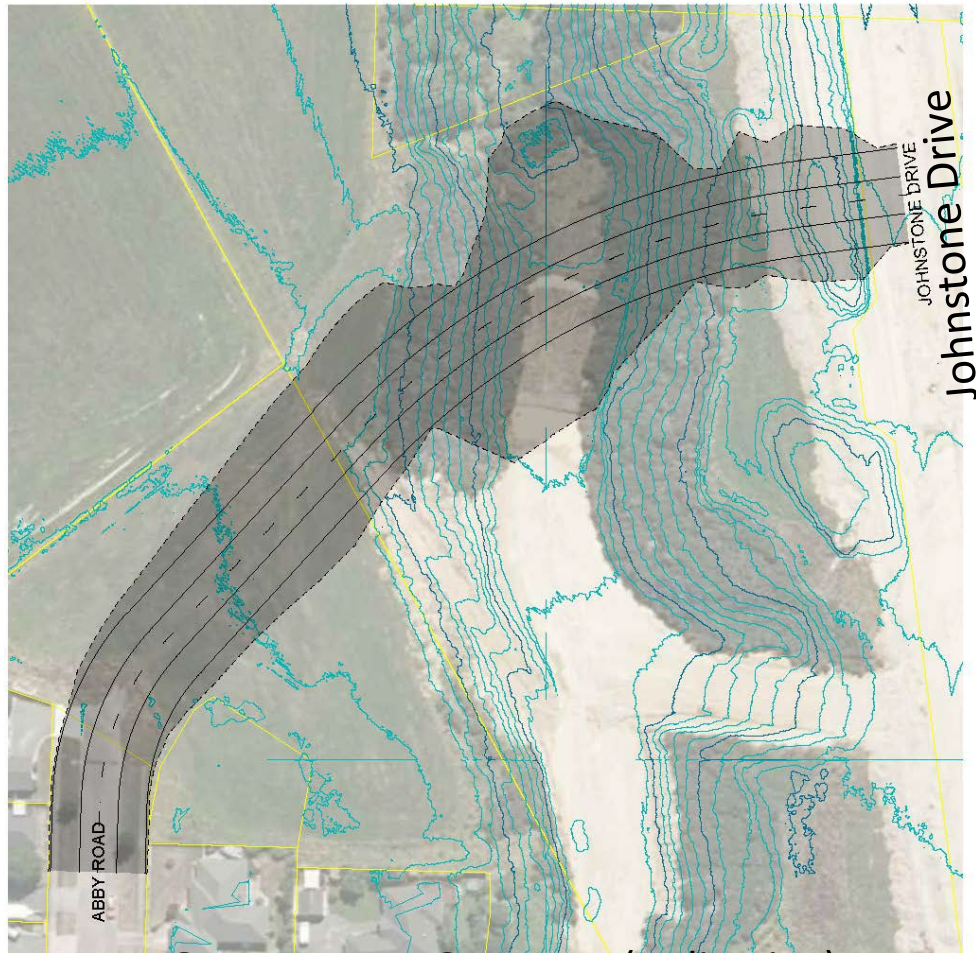
# Slide 4    Aerial view of proposed intersection



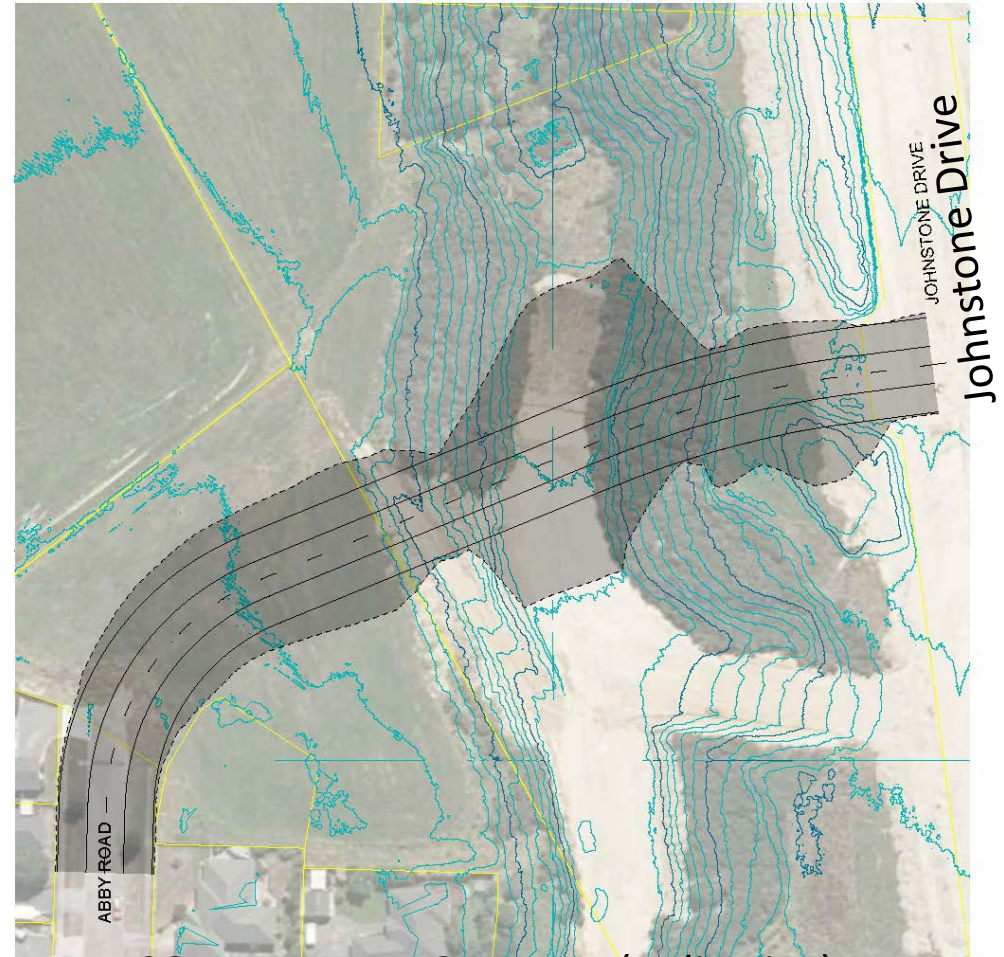
# Slide 5 Proposed alignments



# Slide 6 Two alignment options



NORTHERN ALIGNMENT (Indicative)



SOUTHERN ALIGNMENT (Indicative)

# Slide 7 View of terraces and gullies near the site



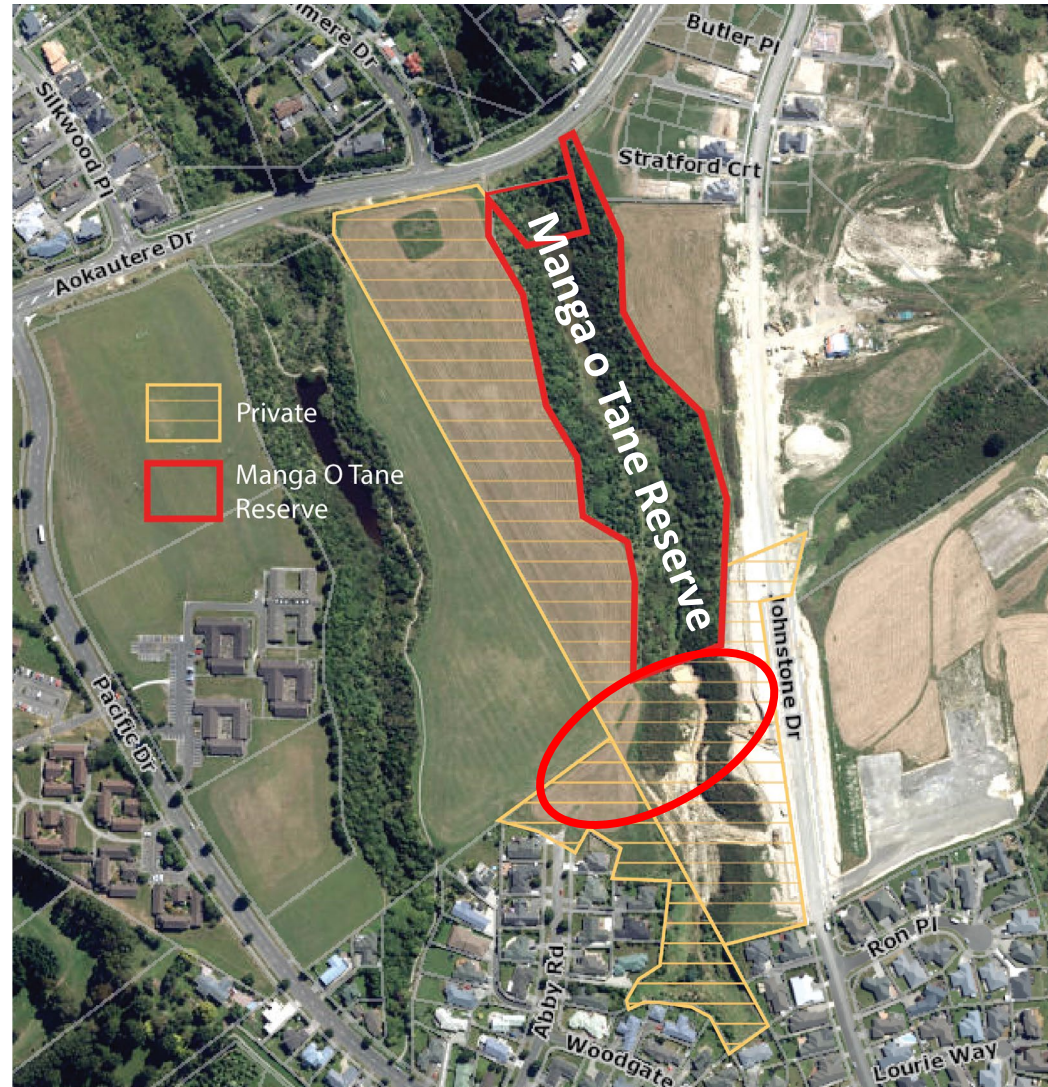
# Slide 8 Developable land within Aokautere



# Slide 9 Existing farm track crossing gully



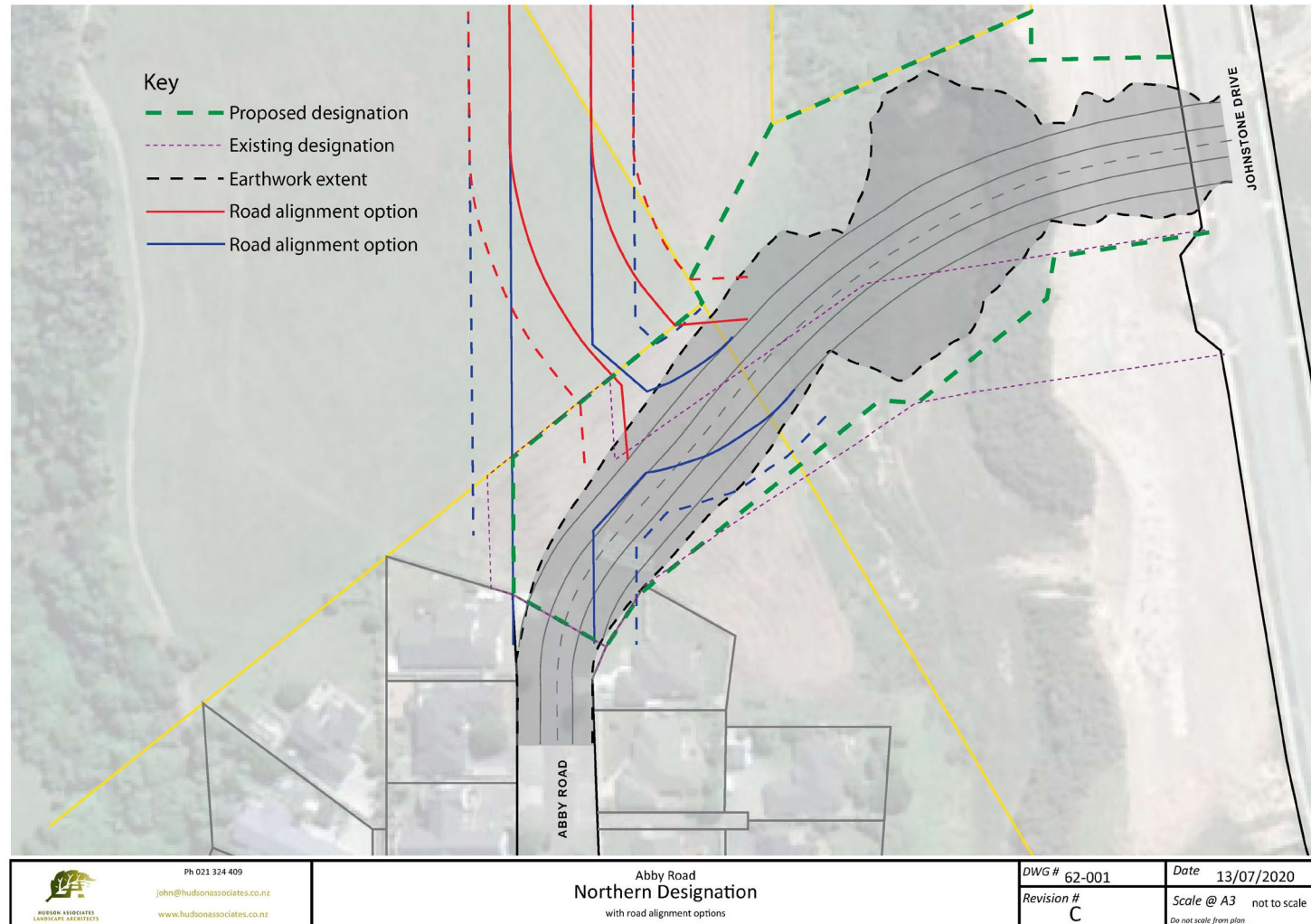
# Slide 10 Application site



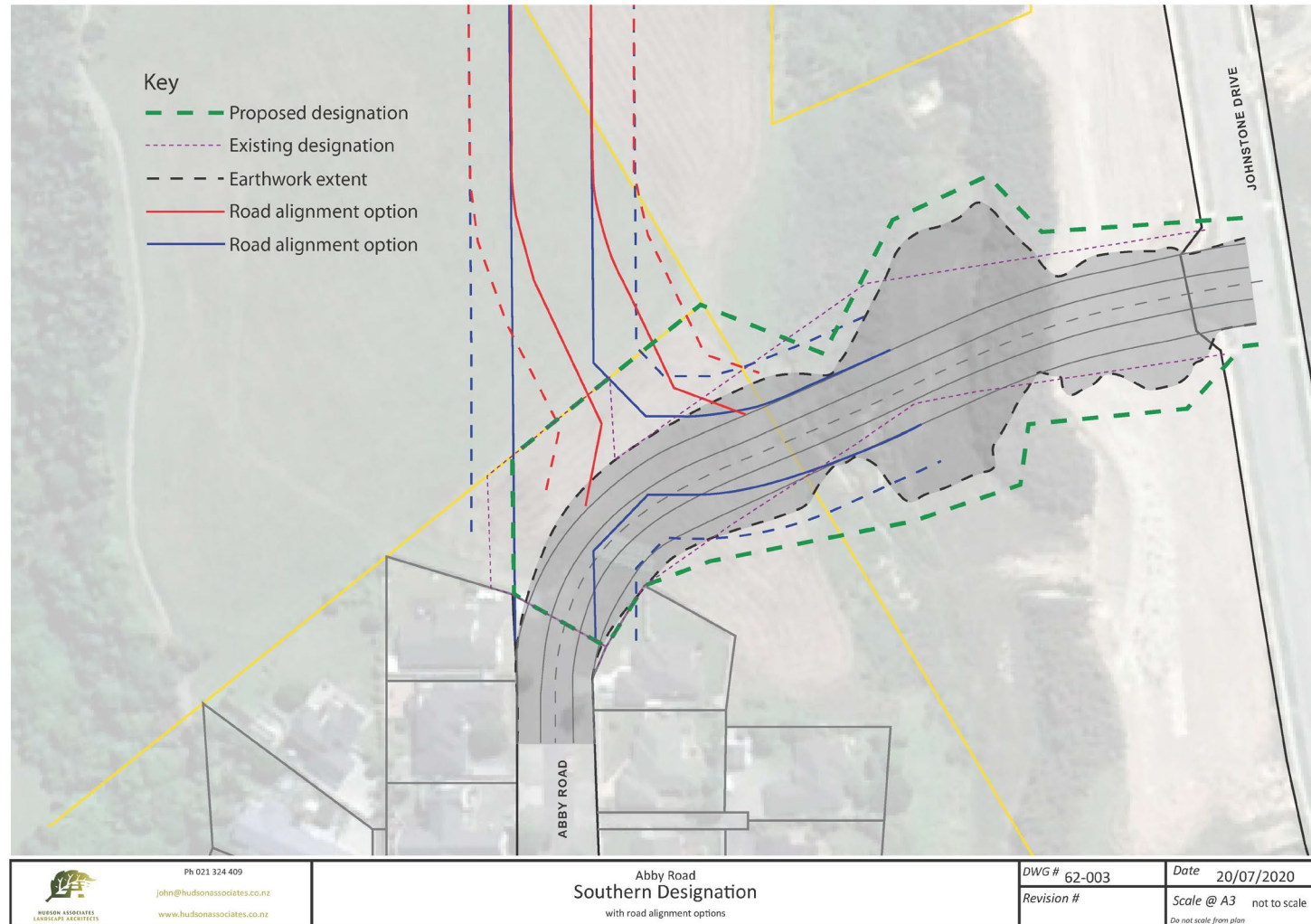
# Slide 11      Aerial view of Abby Road Gully



# Slide 12    Option 1, northern alignment



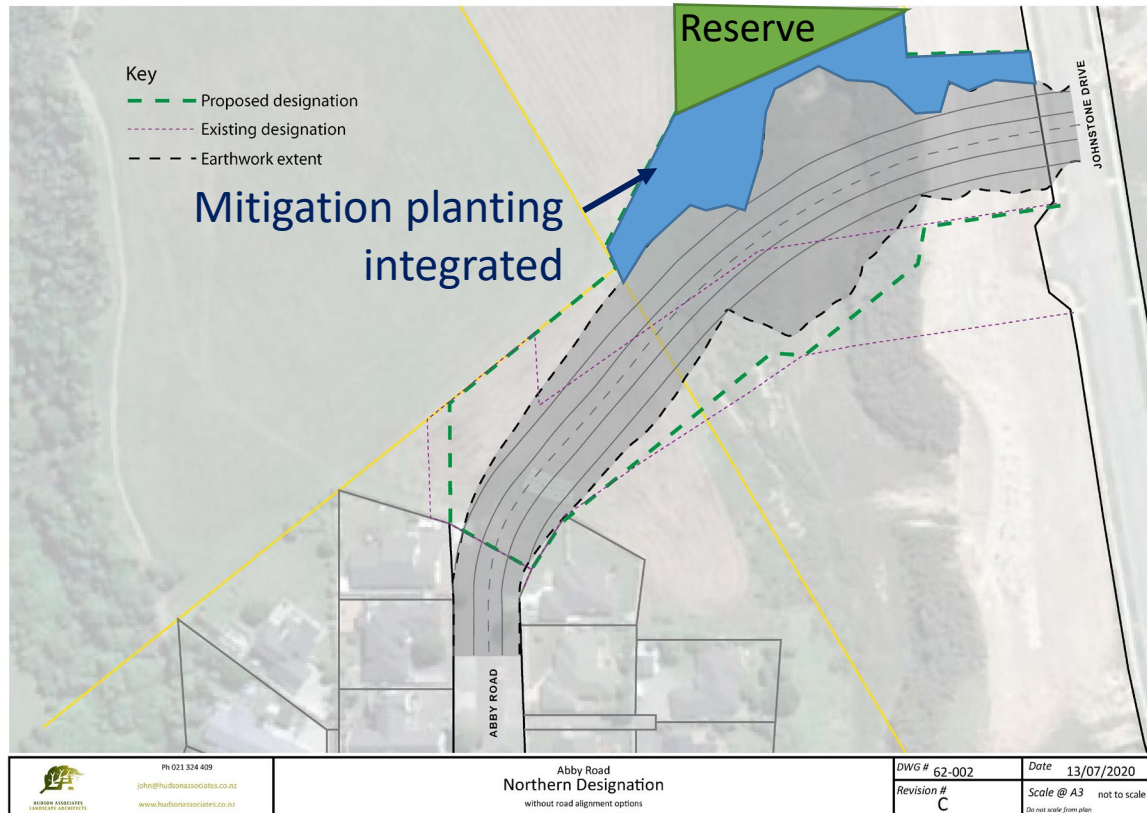
# Slide 13 Option 2, southern alignment



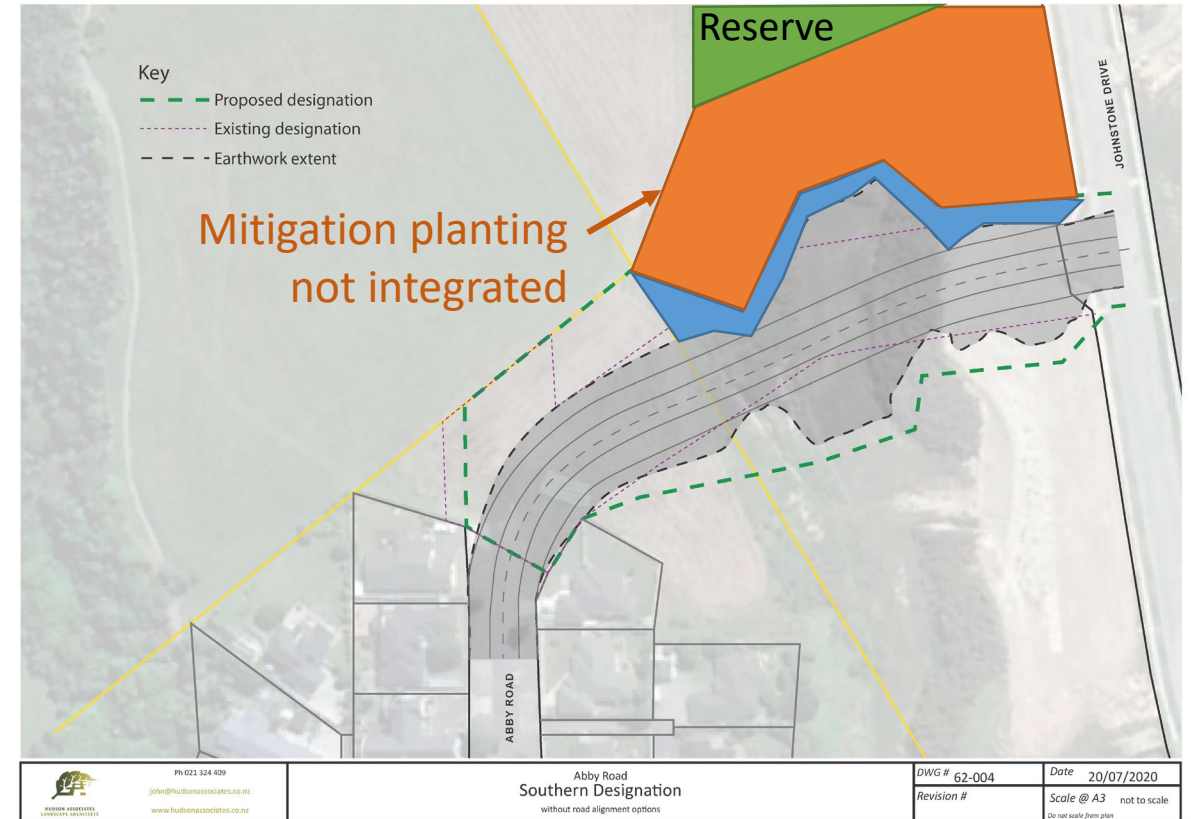
# Slide 14 Existing modifications within site



# Slide 15 Option 1 and 2 in relation to Reserve

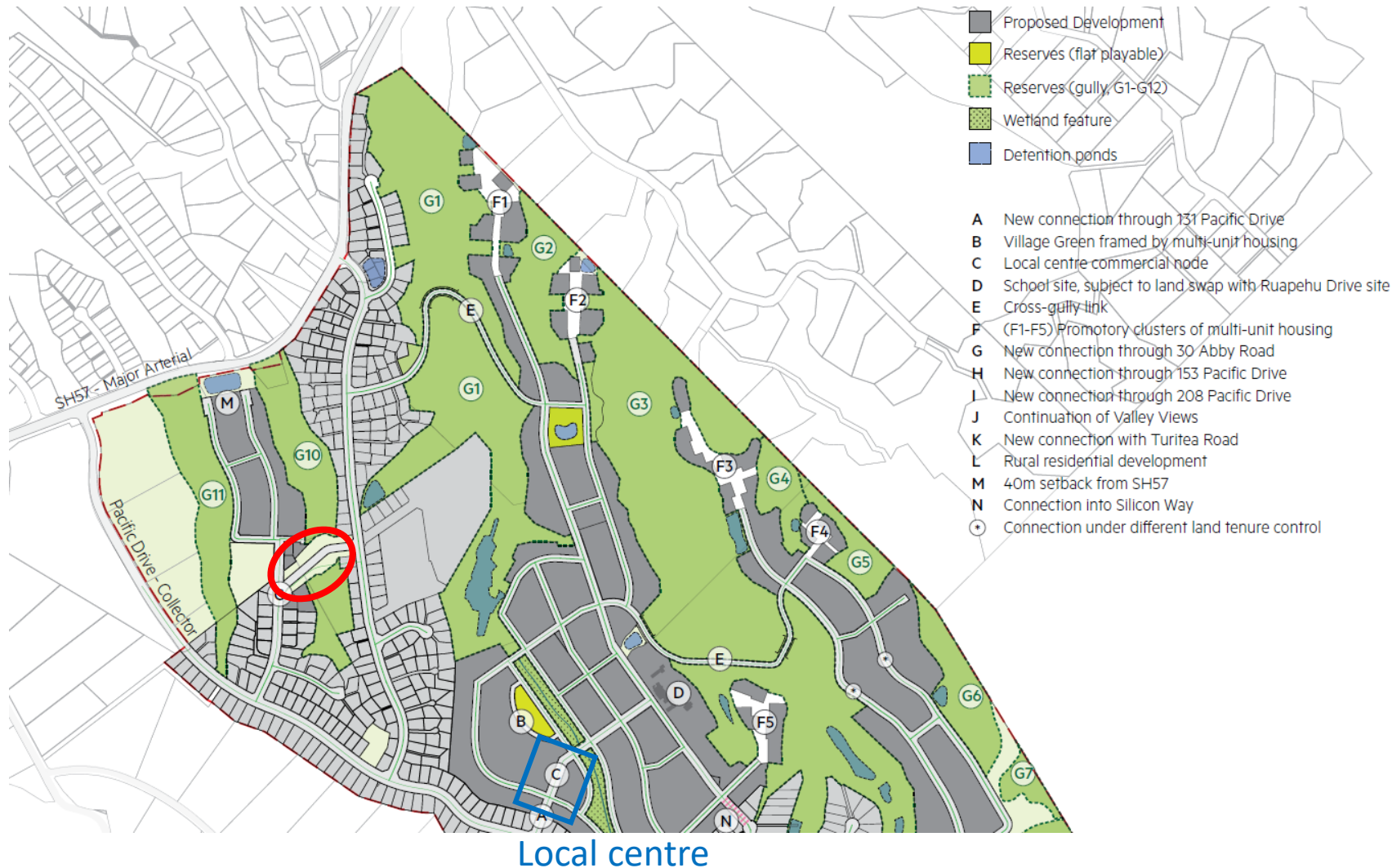


Option 1

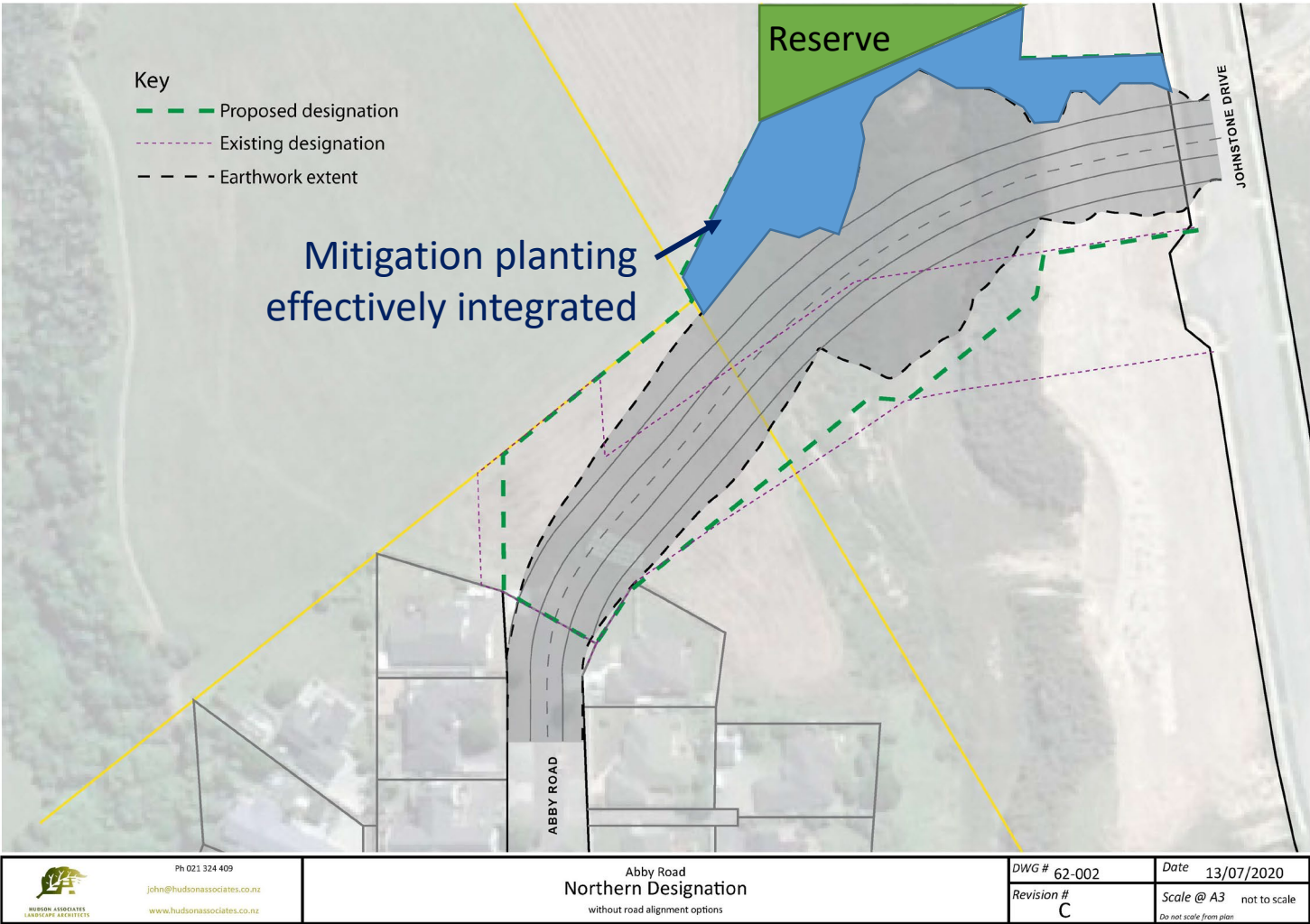


Option 2

# Slide 16 The draft Aokautere Structure Plan



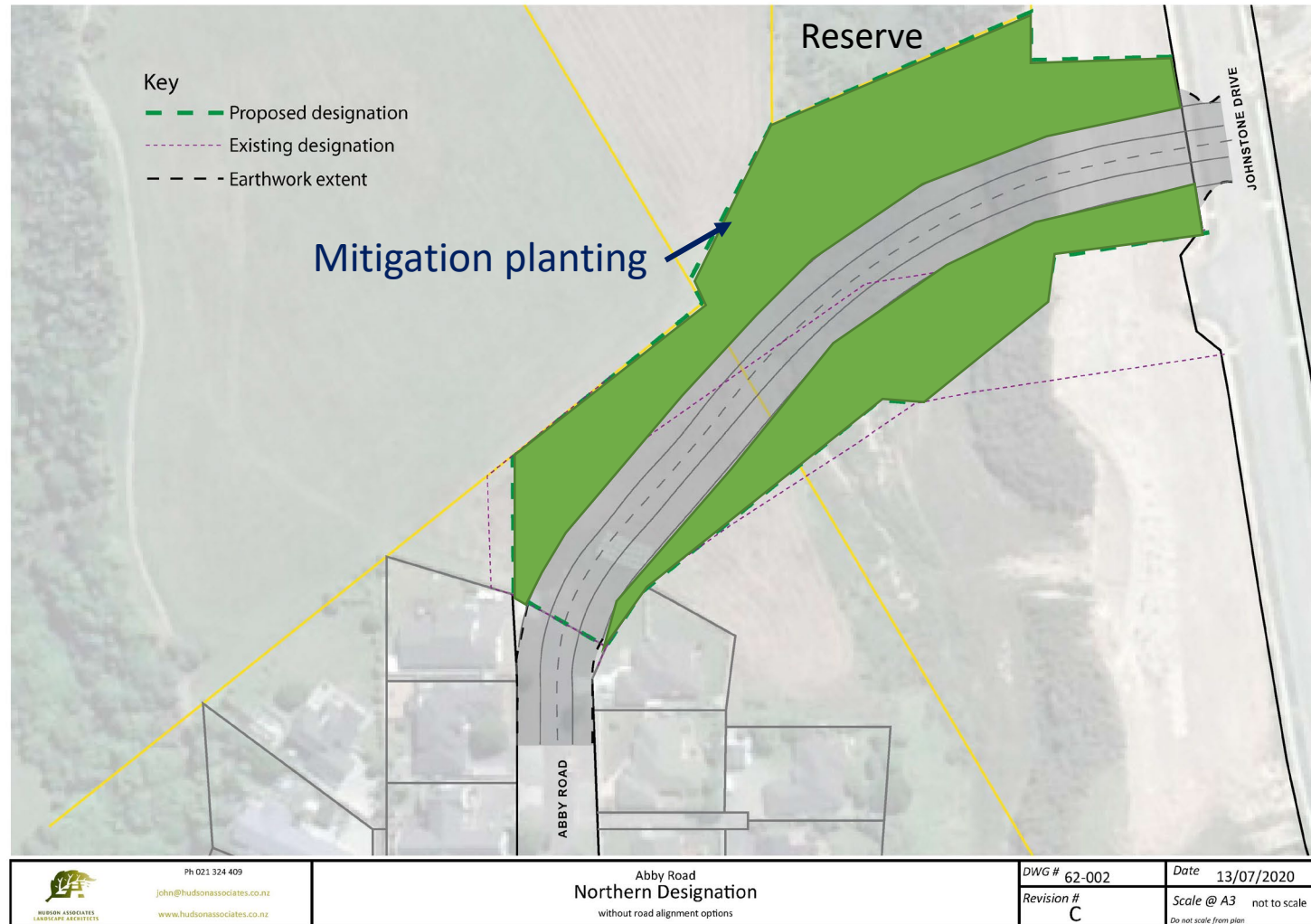
# Slide 17 Preferred Option 1



# Slide 18 Existing vegetation in Abby Road Gully



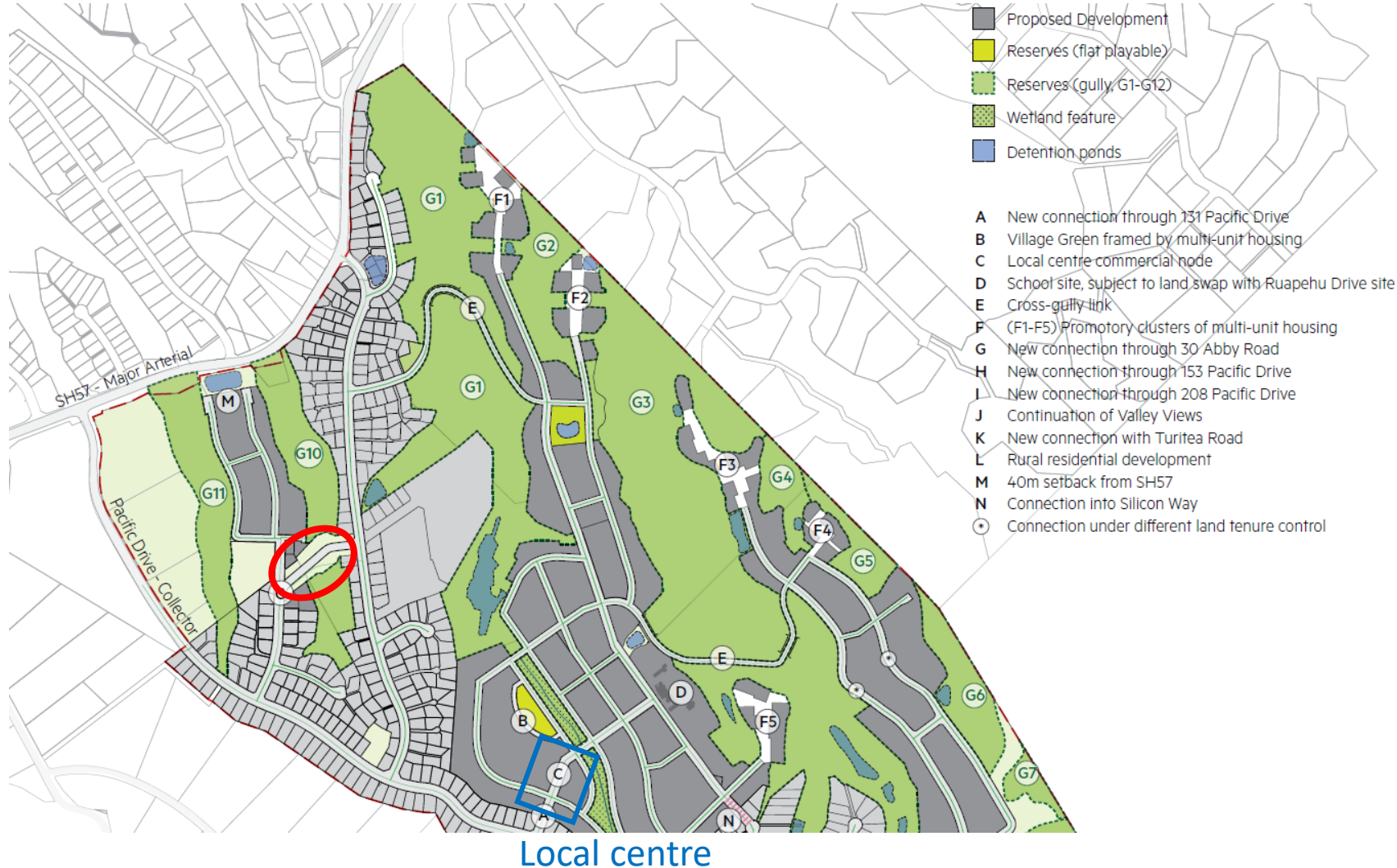
# Slide 19 Mitigation planting, Option 1



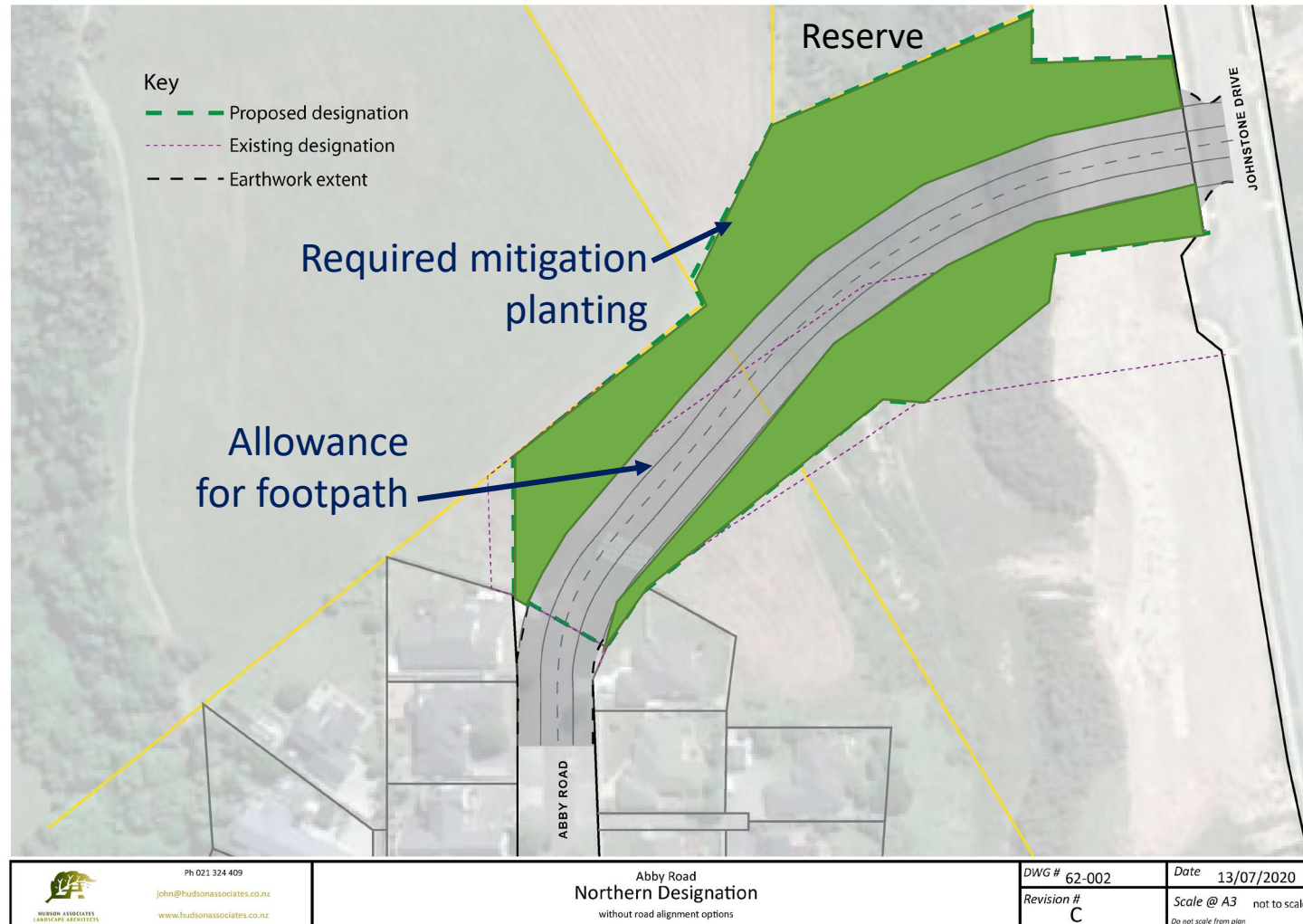
# Slide 20 Existing modification of Abby Road Gully



# Slide 21 Connectivity with proposed development



# Slide 22 Option 1 designation area



# Slide 23 Preferred Option: 1- northern alignment

