

**APPENDIX A**



# KiwiRail Regional Freight Hub

## Context Photographs - Appendix A

### Landscape and Visual Evidence

June 2021

NOTE: FOR SCREEN VIEWING ONLY. TO BE PRINTED AS AN A3 2 PAGE SPREAD INCLUDING CROP MARKS.



Land.  
People.  
Culture.  
Isthmus.



# Isthmus.

## Document record

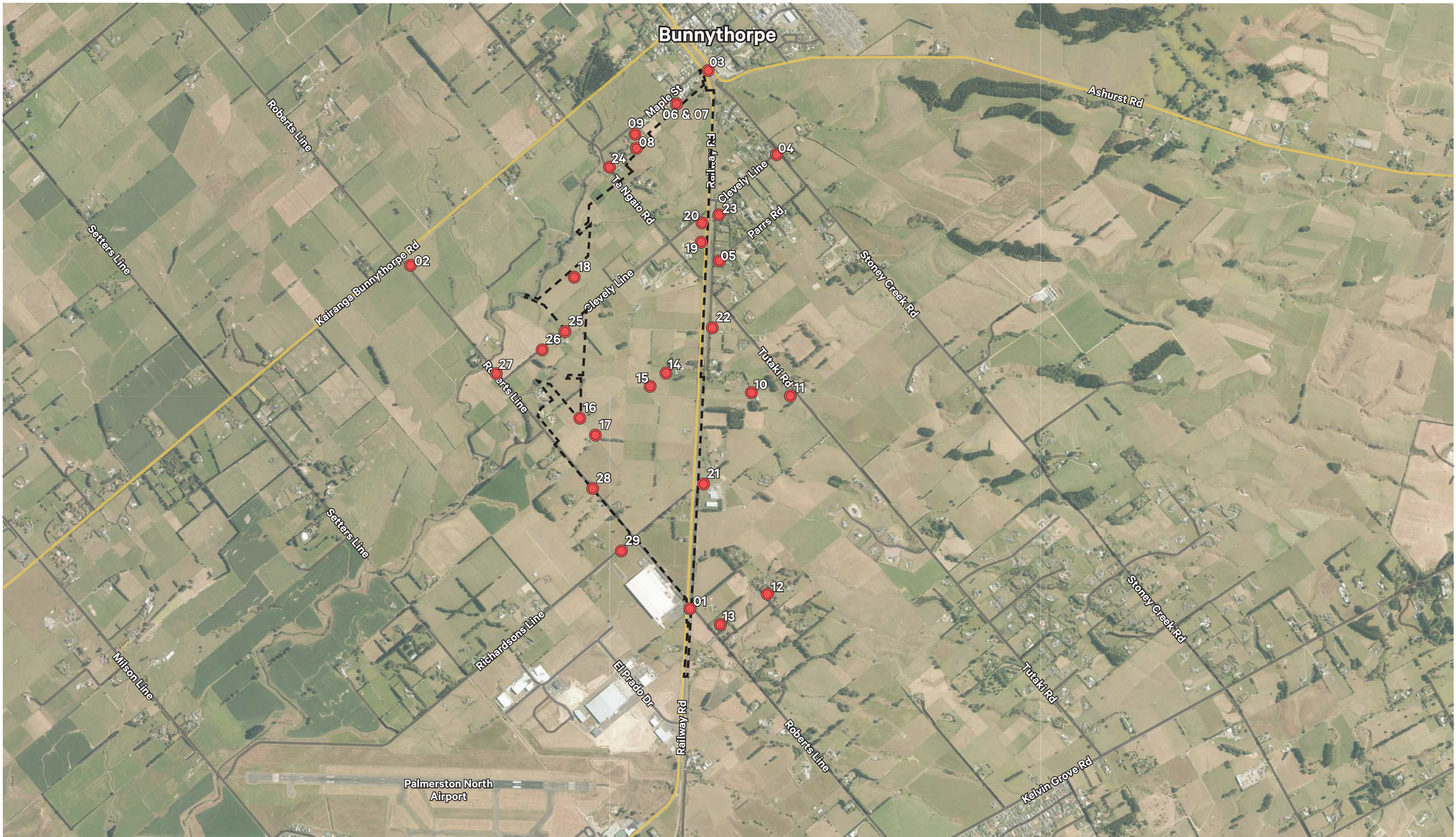
Issue	Revision	Author	QA	Date
EVI	A	TW	LR	30/06/2021
EVI	B	CD	LR	06/07/2021

# Contents

Figure 01   Viewpoint Location Map	5
Figure 02   Viewpoint 01 - Corner of Roberts Line & Railway Road	6
Figure 03   Viewpoint 02 - Corner of Roberts Line & Kairanga Bunnythorpe Road	8
Figure 04   Viewpoint 03 - Campbell Road, Bunnythorpe	10
Figure 05   Viewpoint 04 - Corner of Clevely Line & Stoney Creek Rd	12
Figure 06   Viewpoint 05 - Parrs Road & Sangsters Road intersection	14
Figure 07   Viewpoint 06 - 9A Maple Street, lower deck	16
Figure 08   Viewpoint 07 - 9A Maple Street, upper deck	18
Figure 09   Viewpoint 08 - 51 Maple Street (Bunnythorpe Cemetery)	20
Figure 10   Viewpoint 09 - 51 Maple Street (Bunnythorpe Cemetery 2)	22
Figure 11   Viewpoint 10 - 363 Tutaki Road	24
Figure 12   Viewpoint 11 - 363 Tutaki Road (2)	26
Figure 13   Viewpoint 12 - 662 Roberts Line	28
Figure 14   Viewpoint 13 - 672 Roberts Line	30
Figure 15   Viewpoint 14 - 789 Railway Road	32
Figure 16   Viewpoint 15 - 789 Railway Road (2)	34
Figure 17   Viewpoint 16 - 788 Roberts Line	36
Figure 18   Viewpoint 17 - 788 Roberts Line (2)	38
Figure 19   Viewpoint 18 - 125 Kairanga Bunnythorpe Road	40
Figure 20   Viewpoint 19 - 307 Te Ngaio Road	42
Figure 21   Viewpoint 20 - 307 Te Ngaio Road (2)	44
Figure 22   Viewpoint 21 - 282 Railway Road	46
Figure 23   Viewpoint 22 - 73 Sangsters Road	48
Figure 24   Viewpoint 23 - 11 Sangsters Road	50
Figure 25   Viewpoint 24 - 241 Te Ngaio Road	54
Figure 26   Viewpoint 25 - 163 Clevely Line West	56
Figure 27   Viewpoint 26 - 163 Clevely Line West (2)	46
Figure 28   Viewpoint 27 - Roberts Line North and Clevely Line West	48
Figure 29   Viewpoint 28 - 771 Roberts Line North	52
Figure 30   Viewpoint 29 - Richardsons Line	54
Figure 31   Methodology	56

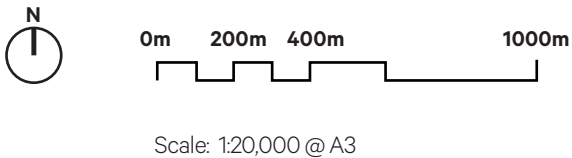






Viewpoint Location Map  
Figure 01

● Viewpoint Locations  
- - Designation Extent







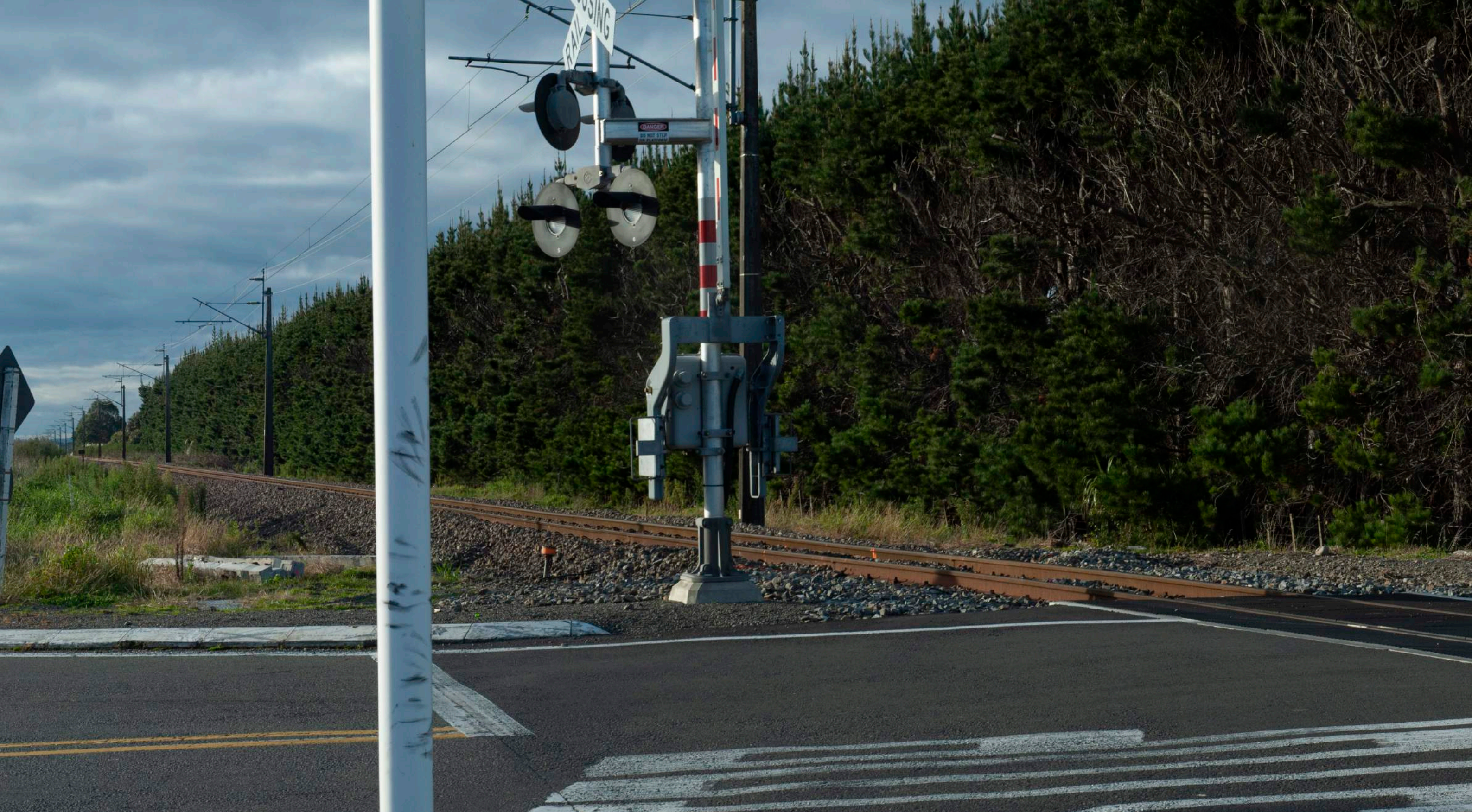
## Viewpoint 01 - Corner of Roberts Line & Railway Road

### Figure 02

View from the corner of Roberts Line and Railway Road, looking north towards the site.







## KiwiRail Regional Freight Hub

**Original Photo** Lisa Rimmer | 50mm | DSLR Nikon D700 | 05:03pm 28 July 2020 | N 5534435 E 1823644 (NZTM)

Reading distance for correct scale: 400mm | Viewpoint Elevation: 48m :

Field of View Approximately 110° horizontal (across 2 x A3 pages) & 34° vertical

Viewpoint 01 - Corner of Roberts Line & Railway Road  
Figure 02  
Page 2 of 2 page spread.





## Viewpoint 02 - Corner of Roberts Line & Kairanga Bunnythorpe Road

### Figure 03

View from the corner of Roberts Line and Kairanga Bunnythorpe Road, looking east towards the site.







**KiwiRail Regional Freight Hub**

**Original Photo** Lisa Rimmer | 50mm | DSLR Nikon D700 | 04:54pm 28 July 2020 | N 5536337 E 1822070 (NZTM)

Reading distance for correct scale: 400mm | Viewpoint Elevation: 35m :

Field of View Approximately 110 ° horizontal (across 2 x A3 pages) & 34 ° vertical

Viewpoint 02 - Corner of Roberts Line & Kairanga Bunnythorpe Road  
Figure 03  
Page 2 of 2 page spread.





## Viewpoint 03 - Campbell Road, Bunnythorpe

### Figure 04

View from Campbell Road, Bunnythorpe, looking south-east towards the site and the north island main trunk line (NIMT).







**KiwiRail Regional Freight Hub**

**Original Photo** Lisa Rimmer | 50mm | DSLR Nikon D700 | 04:48pm 28 July 2020 | N 5537445 E 1823726 (NZTM)  
Reading distance for correct scale: 400mm | Viewpoint Elevation: 48m :  
Field of View Approximately 110 ° horizontal (across 2 x A3 pages) & 34 ° vertical

Viewpoint 03 - Campbell Road, Bunnythorpe  
Figure 04  
Page 2 of 2 page spread.





## Viewpoint 04 - Corner of Clevely Line & Stoney Creek Rd intersection

### Figure 05

View from the corner of Clevely Line and Stoney Creek Road, looking south-west towards the site.







## KiwiRail Regional Freight Hub

**Original Photo** Lisa Rimmer | 50mm | DSLR Nikon D700 | 04:42pm 28 July 2020 | N 5536955 E 1823134 (NZTM)

Reading distance for correct scale: 400mm | Viewpoint Elevation: 51m :

Field of View Approximately 110 ° horizontal (across 2 x A3 pages) & 34 ° vertical

Viewpoint 04 - Corner of Clevely Line & Stoney Creek Rd intersection  
Figure 05  
Page 2 of 2 page spread.

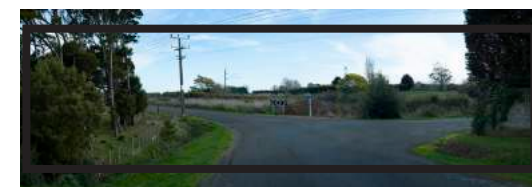




## Viewpoint 05 - Parrs Road & Sangsters Road intersection

### Figure 06

View from the corner of Parrs Road and Sangsters Road, looking south-west towards the site.







**KiwiRail Regional Freight Hub**

**Original Photo** Lisa Rimmer | 50mm | DSLR Nikon D700 | 04:37pm 28 July 2020 | N 5536355 E 1823806 (NZTM)

Reading distance for correct scale: 400mm | Viewpoint Elevation: 46m :

Field of View Approximately 110° horizontal (across 2 x A3 pages) & 34° vertical

Viewpoint 05 - Parrs Road & Sangsters Road intersection  
Figure 06  
Page 2 of 2 page spread.





## Viewpoint 06- 9A Maple Street, lower deck

### Figure 07

View from the ground level deck at 9A Maple Street, looking south east towards Railway Road and the site.







**KiwiRail Regional Freight Hub**

**Original Photo** Lisa Rimmer | 50mm | DSLR Nikon D700 | 2:36pm 23 September 2020 | N 5537234.638 E 1823559.064 (NZTM)  
Reading distance for correct scale: 400mm | Viewpoint Elevation: 49m :  
Field of View Approximately 110° horizontal (across 2 x A3 pages) & 34° vertical

Viewpoint 06- 9A Maple Street, lower deck  
Figure 07  
Page 2 of 2 page spread.





## Viewpoint 07 - 9A Maple Street, upper deck

### Figure 08

View from upstairs deck at 9A Maple Street, looking south east towards Railway Road and the site.







**KiwiRail Regional Freight Hub**

**Original Photo** Lisa Rimmer | 50mm | DSLR Nikon D700 | 2:46pm 23 September 2020 | N 5537232.325 E 1823555.875 (NZTM)  
Reading distance for correct scale: 400mm | Viewpoint Elevation: 50m :  
Field of View Approximately 110 ° horizontal (across 2 x A3 pages) & 34 ° vertical

Viewpoint 07 - 9A Maple Street, upper deck  
Figure 08  
Page 2 of 2 page spread.





**Viewpoint 8 - 51 Maple Street (Bunnythorpe Cemetery)**  
**Figure 09**

View from 51 Maple Street (Cemetery), looking south east towards the site.







**KiwiRail Regional Freight Hub**

**Original Photo** Lisa Rimmer | 50mm | DSLR Nikon D700 | 03:04pm 28 July 2020 | N 5536976 E 1823351 (NZTM)

Reading distance for correct scale: 400mm | Viewpoint Elevation: 42m :

Field of View Approximately 110° horizontal (across 2 x A3 pages) & 34° vertical

Viewpoint 8 - 51 Maple Street (Bunnythorpe Cemetery)  
Figure 09  
Page 2 of 2 page spread.





## Viewpoint 9 - 51 Maple Street (Bunnythorpe Cemetery 2)

### Figure 010

View from 51 Maple Street (Cemetery), looking south-east towards the site







**KiwiRail Regional Freight Hub**

**Original Photo** Lisa Rimmer | 50mm | DSLR Nikon D700 | 03:15pm 28 July 2020 | N 5537082 E 1823359 (NZTM)  
Reading distance for correct scale: 400mm | Viewpoint Elevation: 49m :  
Field of View Approximately 110° horizontal (across 2 x A3 pages) & 34° vertical

Viewpoint 9 - 51 Maple Street (Bunnythorpe Cemetery 2)  
Figure 010  
Page 2 of 2 page spread.

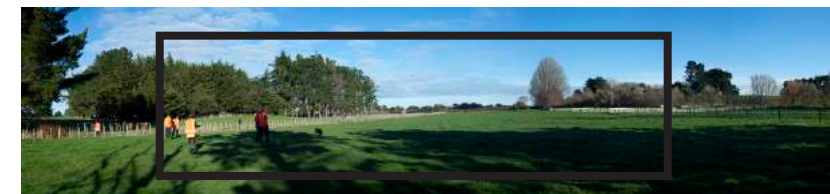




## Viewpoint 10 - 363 Tutaki Road

### Figure 011

View from 363 Tutaki Road, looking south west towards the site.







**KiwiRail Regional Freight Hub**

**Original Photo** Lisa Rimmer | 50mm | DSLR Nikon D700 | 10:27am 28 July 2020 | N 5535607 E 1823995 (NZTM)  
Reading distance for correct scale: 400mm | Viewpoint Elevation: 36m :  
Field of View Approximately 110 ° horizontal (across 2 x A3 pages) & 34 ° vertical

Viewpoint 10 - 363 Tutaki Road  
Figure 011  
Page 2 of 2 page spread.