

KiwiRail Regional Freight Hub

Context Photographs - Landscape and Visual Assessment

09 October 2020

This document should be printed on SRA3 paper and trimmed for full bleed and 2 page spread.

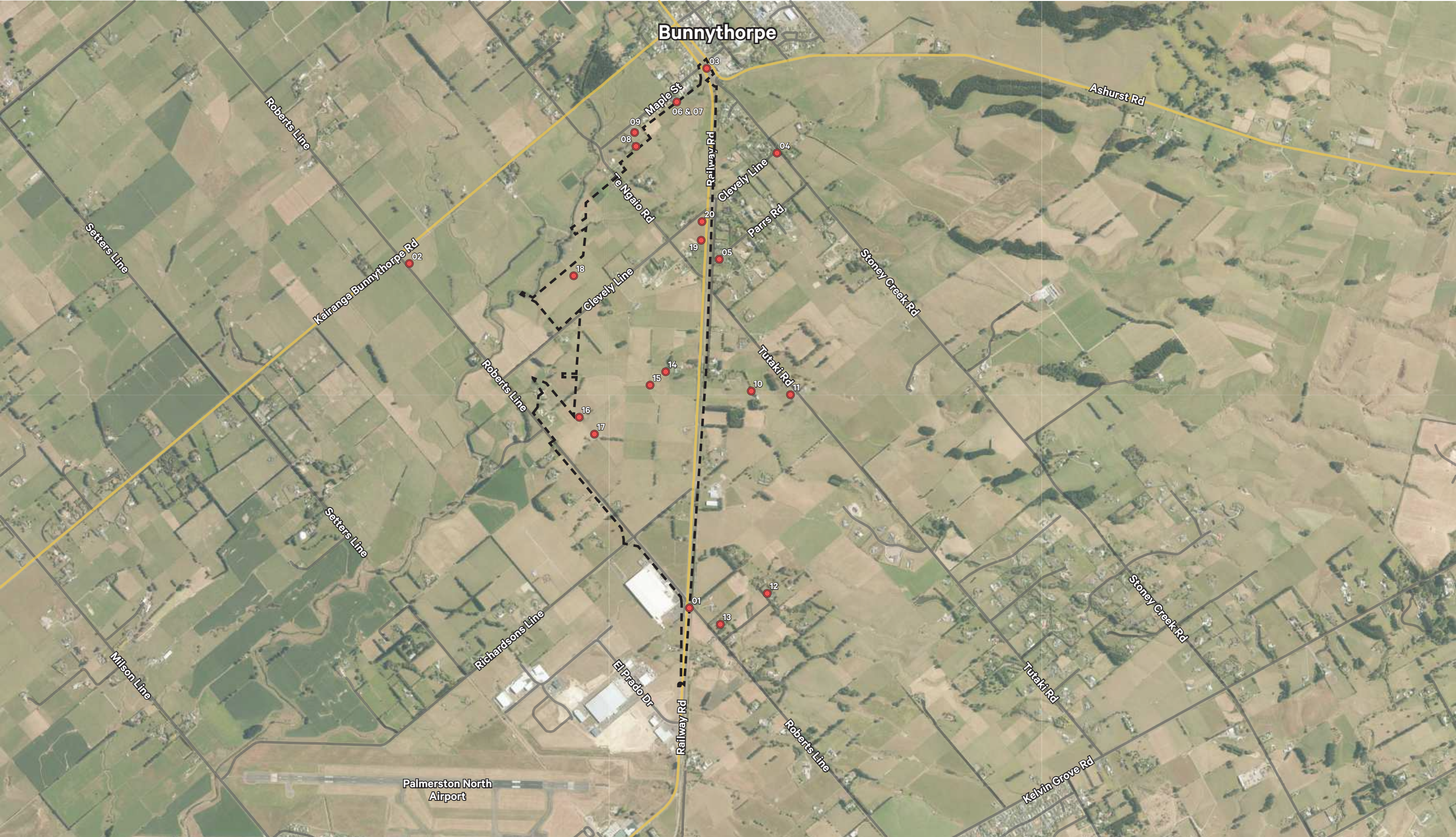
Where this is not possible, the reading distances stated do not apply.



Document record				
Issue	Revision	Author	QA	Date
Draft	A	SE	LR	09.10.2020

Contents

Figure 01 Viewpont Location Map	5
Figure 02 Viewpoint 01 - Corner of Roberts Line & Railway Road	6
Figure 03 Viewpoint 02 - Corner of Roberts Line & Kairanga Bunnythorpe Road	8
Figure 04 Viewpoint 03 - Campbell Road, Bunnythorpe	10
Figure 05 Viewpoint 04 - Corner of Clevely Line & Stoney Creek Rd	12
Figure 06 Viewpoint 05 - Parrs Road & Sangsters Road intersection	14
Figure 07 Viewpoint 06 - 9A Maple Street, lower deck	16
Figure 08 Viewpoint 07 - 9A Maple Street, upper deck	18
Figure 09 Viewpoint 08 - 51 Maple Street (Bunnythorpe Cemetery)	20
Figure 10 Viewpoint 09 - 51 Maple Street (Bunnythorpe Cemetery 2)	22
Figure 11 Viewpoint 10 - 363 Tutaki Road	24
Figure 12 Viewpoint 11 - 363 Tutaki Road (2)	26
Figure 13 Viewpoint 12 - 662 Roberts Line	28
Figure 14 Viewpoint 13 - 672 Roberts Line	30
Figure 15 Viewpoint 14 - 789 Railway Road	32
Figure 16 Viewpoint 15 - 789 Railway Road (2)	34
Figure 17 Viewpoint 16 - 788 Roberts Line	36
Figure 18 Viewpoint 17 - 788 Roberts Line (2)	38
Figure 19 Viewpoint 18 - 125 Kairanga Bunnythorpe Road	40
Figure 20 Viewpoint 19 - 307 Te Ngaio Road	42
Figure 21 Viewpoint 20 - 307 Te Ngaio Road (2)	44
Figure 22 Methodology	47



Viewpoint Location Map
Figure 01

● Viewpoint Locations

--- Designation Extent

N

0m

200m

400m

1000m

Scale: 1:20,000 @ A3



Viewpoint 01 - Corner of Roberts Line & Railway Road

Figure 02

View from the corner of Roberts Line and Railway Road, looking north towards the site.





KwiRail Regional Freight Hub

Original Photo Lisa Rimmer | 50mm | DSLR Nikon D700 | 05:03pm 28 July 2020 | N 5534435 E 1823644 (NZTM)

Reading distance for correct scale: 400mm | Viewpoint Elevation: 48m :

Field of View Approximately 110° horizontal (across 2 x A3 pages) & 34° vertical



Viewpoint 02 - Corner of Roberts Line & Kairanga Bunnythorpe Road

Figure 03

View from the corner of Roberts Line and Kairanga Bunnythorpe Road, looking east towards the site.





KwiRail Regional Freight Hub

Original Photo Lisa Rimmer | 50mm | DSLR Nikon D700 | 04:54pm 28 July 2020 | N 5536337 E 1822070 (NZTM)
Reading distance for correct scale: 400mm | Viewpoint Elevation: 35m :
Field of View Approximately 110 ° horizontal (across 2 x A3 pages) & 34 ° vertical

This document should be printed on SRA3 paper and trimmed for full bleed and 2 page spread. Where this is not possible, the reading distances stated do not apply.



Viewpoint 03 - Campbell Road, Bunnythorpe

Figure 04

View from Campbell Road, Bunnythorpe, looking south-east towards the site and the north island main trunk line (NIMT).





KwiRail Regional Freight Hub

Original Photo Lisa Rimmer | 50mm | DSLR Nikon D700 | 04:48pm 28 July 2020 | N 5537445 E 1823726 (NZTM)

Reading distance for correct scale: 400mm | Viewpoint Elevation: 48m :

Field of View Approximately 110° horizontal (across 2 x A3 pages) & 34° vertical

This document should be printed on SRA3 paper and trimmed for full bleed and 2 page spread. Where this is not possible, the reading distances stated do not apply.



**Viewpoint 04 - Corner of Clevely Line & Stoney Creek Rd
intersection
Figure 05**





KwiRail Regional Freight Hub

Original Photo Lisa Rimmer | 50mm | DSLR Nikon D700 | 04:42pm 28 July 2020 | N 5536955 E 1823134 (NZTM)

Reading distance for correct scale: 400mm | Viewpoint Elevation: 51m :

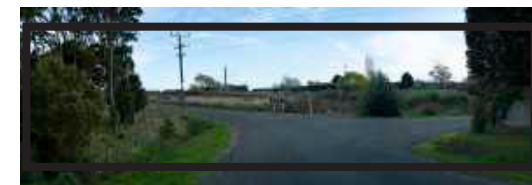
Field of View Approximately 110° horizontal (across 2 x A3 pages) & 34° vertical



Viewpoint 05 - Parrs Road & Sangsters Road intersection

Figure 06

View from the corner of Parrs Road and Sangsters Road, looking south-west towards the site.





KwiRail Regional Freight Hub

Original Photo Lisa Rimmer | 50mm | DSLR Nikon D700 | 04:37pm 28 July 2020 | N 5536355 E 1823806 (NZTM)

Reading distance for correct scale: 400mm | Viewpoint Elevation: 46m :

Field of View Approximately 110 ° horizontal (across 2 x A3 pages) & 34 ° vertical

This document should be printed on SRA3 paper and trimmed for full bleed and 2 page spread. Where this is not possible, the reading distances stated do not apply.



Viewpoint 06- 9A Maple Street, lower deck

Figure 07

View from the ground level deck at 9A Maple Street, looking south east towards Railway Road and the site.





KwiRail Regional Freight Hub

Original Photo Lisa Rimmer | 50mm | DSLR Nikon D700 | 2:36pm 23 September 2020 | N 5537234.638 E 1823559.064 (NZTM)
Reading distance for correct scale: 400mm | Viewpoint Elevation: 49m :
Field of View Approximately 110 ° horizontal (across 2 x A3 pages) & 34 ° vertical

This document should be printed on SRA3 paper and trimmed for full bleed and 2 page spread. Where this is not possible, the reading distances stated do not apply.



Viewpoint 07 - 9A Maple Street, upper deck

Figure 08

View from upstairs deck at 9A Maple Street, looking south east towards Railway Roa and the site.





KwiRail Regional Freight Hub

Original Photo Lisa Rimmer | 50mm | DSLR Nikon D700 | 2:46pm 23 September 2020 | N 5537232.325 E 1823555.875 (NZTM)

Reading distance for correct scale: 400mm | Viewpoint Elevation: 50m :

Field of View Approximately 110° horizontal (across 2 x A3 pages) & 34° vertical



Viewpoint 8 - 51 Maple Street (Bunnythorpe Cemetery)

Figure 09

View from 51 Maple Street (Cemetery), looking south east towards the site.





KwiRail Regional Freight Hub

Original Photo Lisa Rimmer | 50mm | DSLR Nikon D700 | 03:04pm 28 July 2020 | N 5536976 E 1823351 (NZTM)

Reading distance for correct scale: 400mm | Viewpoint Elevation: 42m :

Field of View Approximately 110° horizontal (across 2 x A3 pages) & 34° vertical



Viewpoint 9 - 51 Maple Street (Bunnythorpe Cemetery 2)

Figure 010

View from 51 Maple Street (Cemetery), looking south-east towards the site





KwiRail Regional Freight Hub

Original Photo Lisa Rimmer | 50mm | DSLR Nikon D700 | 03:15pm 28 July 2020 | N 5537082 E 1823359 (NZTM)
Reading distance for correct scale: 400mm | Viewpoint Elevation: 49m :
Field of View Approximately 110° horizontal (across 2 x A3 pages) & 34° vertical

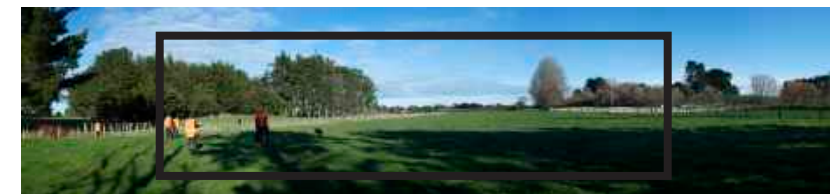
This document should be printed on SRA3 paper and trimmed for full bleed and 2 page spread. Where this is not possible, the reading distances stated do not apply.



Viewpoint 10 - 363 Tutaki Road

Figure 011

View from 363 Tutaki Road, looking south west towards the site.





KwiRail Regional Freight Hub

Original Photo Lisa Rimmer | 50mm | DSLR Nikon D700 | 10:27am 28 July 2020 | N 5535607 E 1823995 (NZTM)

Reading distance for correct scale: 400mm | Viewpoint Elevation: 36m :

Field of View Approximately 110° horizontal (across 2 x A3 pages) & 34° vertical

This document should be printed on SRA3 paper and trimmed for full bleed and 2 page spread. Where this is not possible, the reading distances stated do not apply.



Viewpoint 11 - 363 Tutaki Road (2)

Figure 012

View from 363 Tutaki Road, looking south west towards the site.





KwiRail Regional Freight Hub

Original Photo Lisa Rimmer | 50mm | DSLR Nikon D700 | 11:22am 28 July 2020 | N 5535583 E 1824211 (NZTM)

Reading distance for correct scale: 400mm | Viewpoint Elevation: 50m :

Field of View Approximately 110° horizontal (across 2 x A3 pages) & 34° vertical



Viewpoint 12 - 662 Roberts Line

Figure 013

View from 662 Roberts Line, looking west from an upstairs window towards Railway Rd, Roberts Line intersection and the site.





KwiRail Regional Freight Hub

Original Photo Lisa Rimmer | 50mm | DSLR Nikon D700 | 03:32pm 28 July 2020 | N 5534570 E 1824003 (NZTM)

Reading distance for correct scale: 400mm | Viewpoint Elevation: 65m :

Field of View Approximately 110° horizontal (across 2 x A3 pages) & 34° vertical



Viewpoint 13 - 672 Roberts Line

Figure 014

View from 672 Roberts Line, looking south west from an upstairs window towards Railway Rd, Roberts Line intersection.





KwiRail Regional Freight Hub

Original Photo Lisa Rimmer | 50mm | DSLR Nikon D700 | 04:13pm 28 July 2020 | N 5534307 E 1823808 (NZTM)

Reading distance for correct scale: 400mm | Viewpoint Elevation: 53m :

Field of View Approximately 110° horizontal (across 2 x A3 pages) & 34° vertical

This document should be printed on SRA3 paper and trimmed for full bleed and 2 page spread. Where this is not possible, the reading distances stated do not apply.



Viewpoint 14 - 789 Railway Road

Figure 015

View from within the proposed designation, 789 Railway Road, looking south west towards Roberts Line and Clevely Line.





KwiRail Regional Freight Hub

Original Photo Lisa Rimmer | 50mm | DSLR Nikon D700 | 03:32pm 27 July 2020 | N 5535728 E 1823520 (NZTM)

Reading distance for correct scale: 400mm | Viewpoint Elevation: 42m :

Field of View Approximately 110° horizontal (across 2 x A3 pages) & 34° vertical



Viewpoint 15 - 789 Railway Road (2)

Figure 016

View from within the proposed designation, 789 Railway Road, looking south east towards Railway Rd





KwiRail Regional Freight Hub

Original Photo Lisa Rimmer | 50mm | DSLR Nikon D700 | 3:47pm 27 July 2020 | N 5535666 E 1823424 (NZTM)

Reading distance for correct scale: 400mm | Viewpoint Elevation: 31m :

Field of View Approximately 110° horizontal (across 2 x A3 pages) & 34° vertical

This document should be printed on SRA3 paper and trimmed for full bleed and 2 page spread. Where this is not possible, the reading distances stated do not apply.



Viewpoint 16 - 788 Roberts Line

Figure 017

View from within the proposed designation, at 788 Roberts Line, looking north-east towards Clevely Line and Railway Rd.





KwiRail Regional Freight Hub

Original Photo Lisa Rimmer | 50mm | DSLR Nikon D700 | 12:47pm 28 July 2020 | N 5535381 E 1823110 (NZTM)

Reading distance for correct scale: 400mm | Viewpoint Elevation: 40m :

Field of View Approximately 110° horizontal (across 2 x A3 pages) & 34° vertical

This document should be printed on SRA3 paper and trimmed for full bleed and 2 page spread. Where this is not possible, the reading distances stated do not apply.



Viewpoint 17 - 788 Roberts Line (2)

Figure 018

View from within the proposed designation, at 788 Roberts Line, looking north-west towards Clevely Line.





KwiRail Regional Freight Hub

Original Photo Lisa Rimmer | 50mm | DSLR Nikon D700 | 12:56pm 28 July 2020 | N 5535462 E 1823038 (NZTM)

Reading distance for correct scale: 400mm | Viewpoint Elevation: 41m :

Field of View Approximately 110° horizontal (across 2 x A3 pages) & 34° vertical

This document should be printed on SRA3 paper and trimmed for full bleed and 2 page spread. Where this is not possible, the reading distances stated do not apply.



Viewpoint 18 - 125 Kairanga Bunnythorpe Road

Figure 019

View from within the proposed designation, at 125 Kairanga Bunnythorpe Road, looking east towards Clevely Line (location on the eastern side of the Mangaone Stream)





KwiRail Regional Freight Hub

Original Photo Lisa Rimmer | 50mm | DSLR Nikon D700 | 4:47pm 27 July 2020 | N 5536257 E 1823007 (NZTM)

Reading distance for correct scale: 400mm | Viewpoint Elevation: 41m :

Field of View Approximately 110° horizontal (across 2 x A3 pages) & 34° vertical



Viewpoint 19 - 307 Te Ngaio Road

Figure 020

View from within the proposed designation at 307 Te Ngaio Road, looking south-west towards Te Ngaio Rd and Railway Rd.





KwiRail Regional Freight Hub

Original Photo Lisa Rimmer | 50mm | DSLR Nikon D700 | 11:58am 28 July 2020 | N 5536464 E 1823722 (NZTM)

Reading distance for correct scale: 400mm | Viewpoint Elevation: 44m :

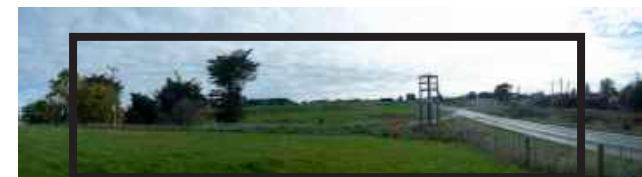
Field of View Approximately 110° horizontal (across 2 x A3 pages) & 34° vertical



Viewpoint 20 - 307 Te Ngaio Road (2)

Figure 021

View from within the proposed designation at 307 Te Ngaio Road, looking north towards the Clevely Line-Railway Rd intersection.





KwiRail Regional Freight Hub

Original Photo Lisa Rimmer | 50mm | DSLR Nikon D700 | 12:06pm 28 July 2020 | N 5536567 E 1823728 (NZTM)

Reading distance for correct scale: 400mm | Viewpoint Elevation: 41m :

Field of View Approximately 110° horizontal (across 2 x A3 pages) & 34° vertical

This document should be printed on SRA3 paper and trimmed for full bleed and 2 page spread. Where this is not possible, the reading distances stated do not apply.

PAGE INTENTIONALLY BLANK

Context Photograph Methodology Statement

- Photos were taken with a fixed lens on DSLR camera. Locations were fixed using a handheld GPS unit with accuracy of 5m. Reference points in the landscape were also located to assist referencing of photo to digital terrain model.
- A sequence of photos was taken from each viewpoint and stitched to form panoramas. Photos were overlapped by approximately 30% and edges cropped prior to stitching to eliminate edge distortion.
- The time and weather when the photo was taken was entered to the programme in order to replicate lighting conditions.
- The completed photomontage is presented over two pages:
 - The photos are produced to replicate correct scale at the nominated reading distance (in this case 400mm).
 - Each photomontage is printed across two facing pages to illustrate a field of view of approximately 110° at a reading distance of 400mm. This approximates the field of human binocular vision. (But not peripheral vision which extends to approximately 200°)

Notes on use of Context Photographs:

- The Context Photographs are a useful tool but they cannot not precisely reproduce real life for the following reasons:
 - 2D Photography flattens an image compared to binocular vision.
 - Photography is static, whereas the human vision can scan and remember information.
 - Photographs are passive, whereas the eye seeks out detail.
 - The human eye can see more contrast than can be reproduced through photography.
 - Physical resolution of photography and printing is less than that of the human eye.

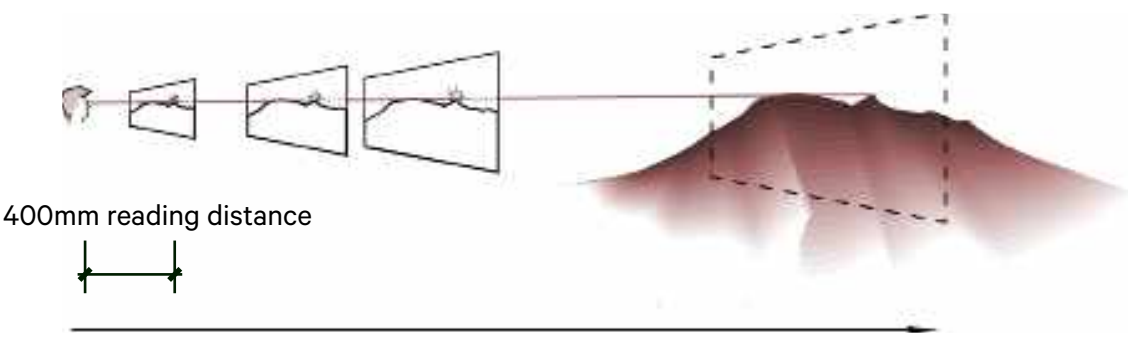


Figure 01: The relationship between reading distance and real life scale.

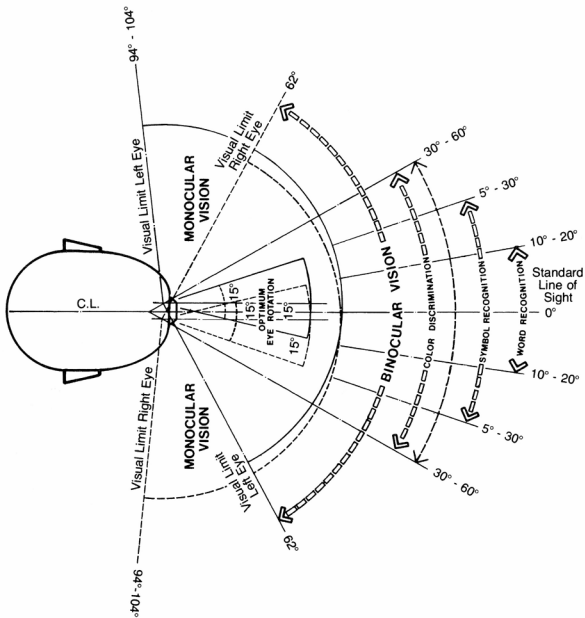


Figure 02: Binocular vision is approximately 124°. Field of view is approximately 110° across 2 x A3 pages at correct scale image for 400mm reading distance (vertical field of view is approximately 33°)



Figure 03: Comparison of 35mm lens and 50mm lens

Two images from the same location. With 35mm and 50mm lenses perspective is influenced by field of view, not by lens focal length. The overlaid portion is identical.

Figure 22

This document should be printed on SRA3 paper and trimmed for full bleed and 2 page spread. Where this is not possible, the reading distances stated do not apply.