

City Centre Indicative Business Case Project Briefing

Friday 3rd Nov 2023





Agenda

Introduction

Project Background

Observed Problems

Strategic Alignment

Objective and Benefits

Development Process

Engagement Approach

Your Role/Support

Next Step

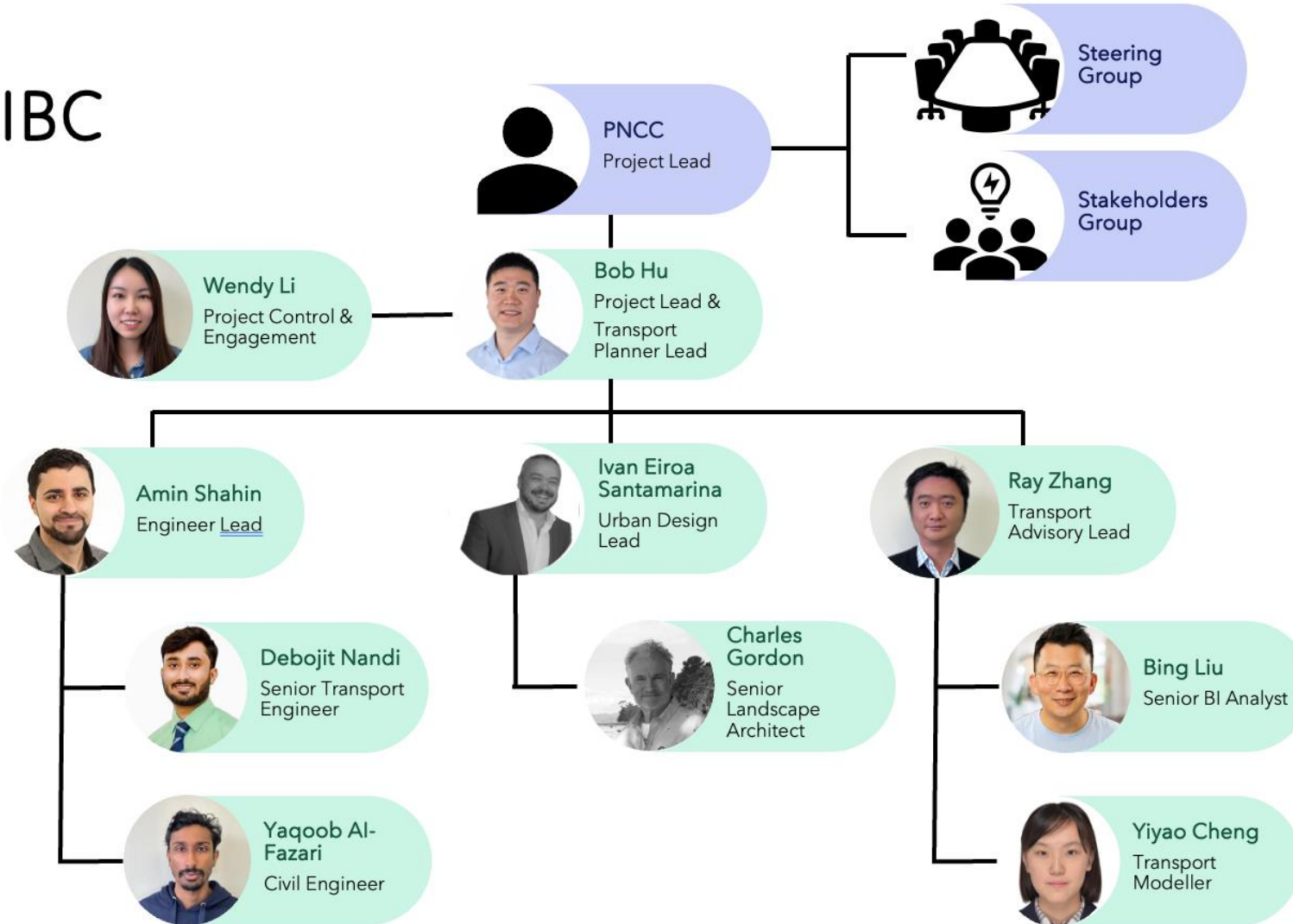
PROJECT TEAM



City Centre IBC

Team Structure

■ Delivery Team ■ Client Team



PROJECT BACKGROUND



Palmerston North Integrated Transport Initiative (PNITI) - 2021

- Economic growth
- Support Freight
- Safety issues
- Improve the liveability



**City Centre Framework
City Centre Streetscape Plan**

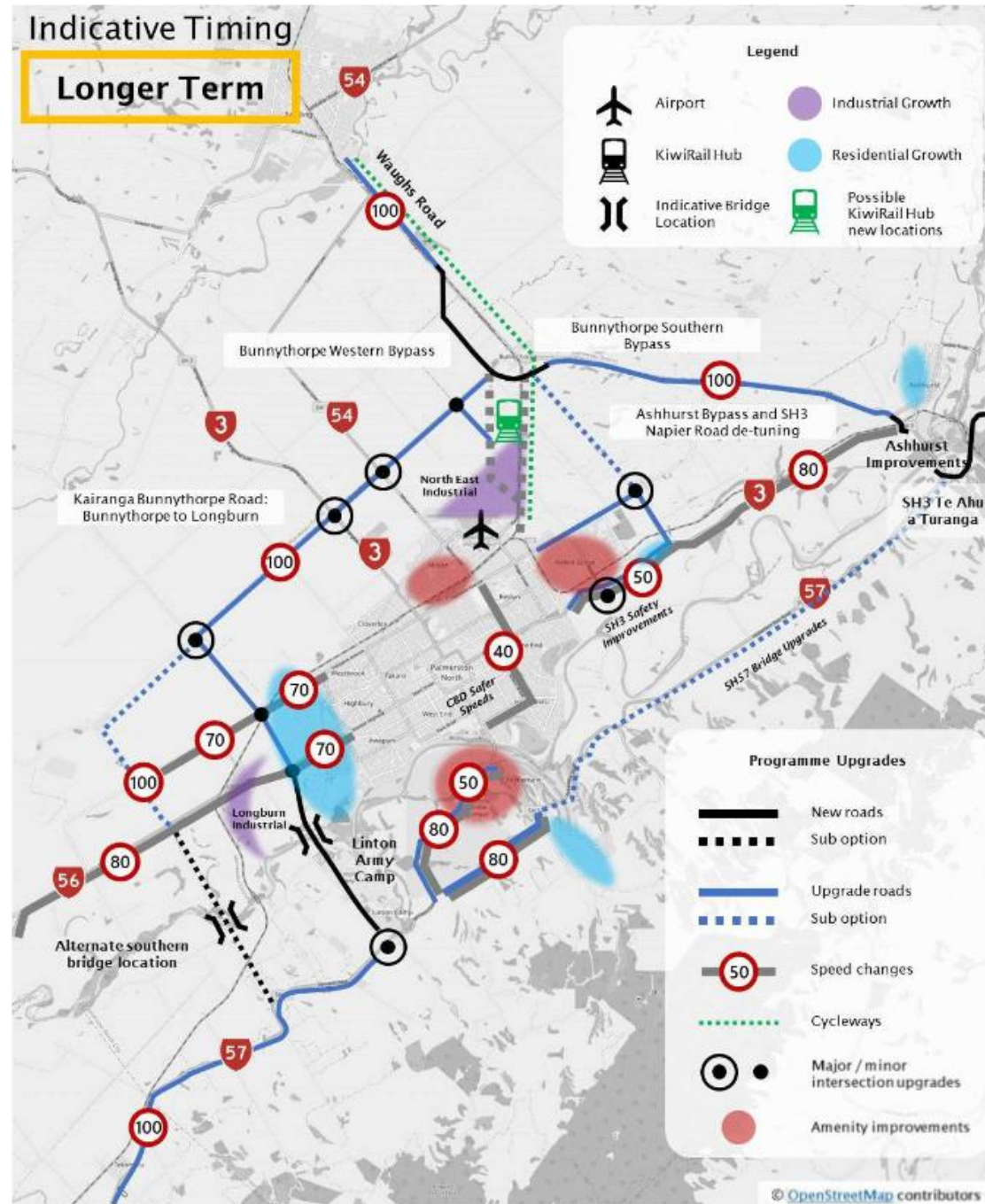
- Urban Design direction
- Vision for streetscape
- Streets for People programme



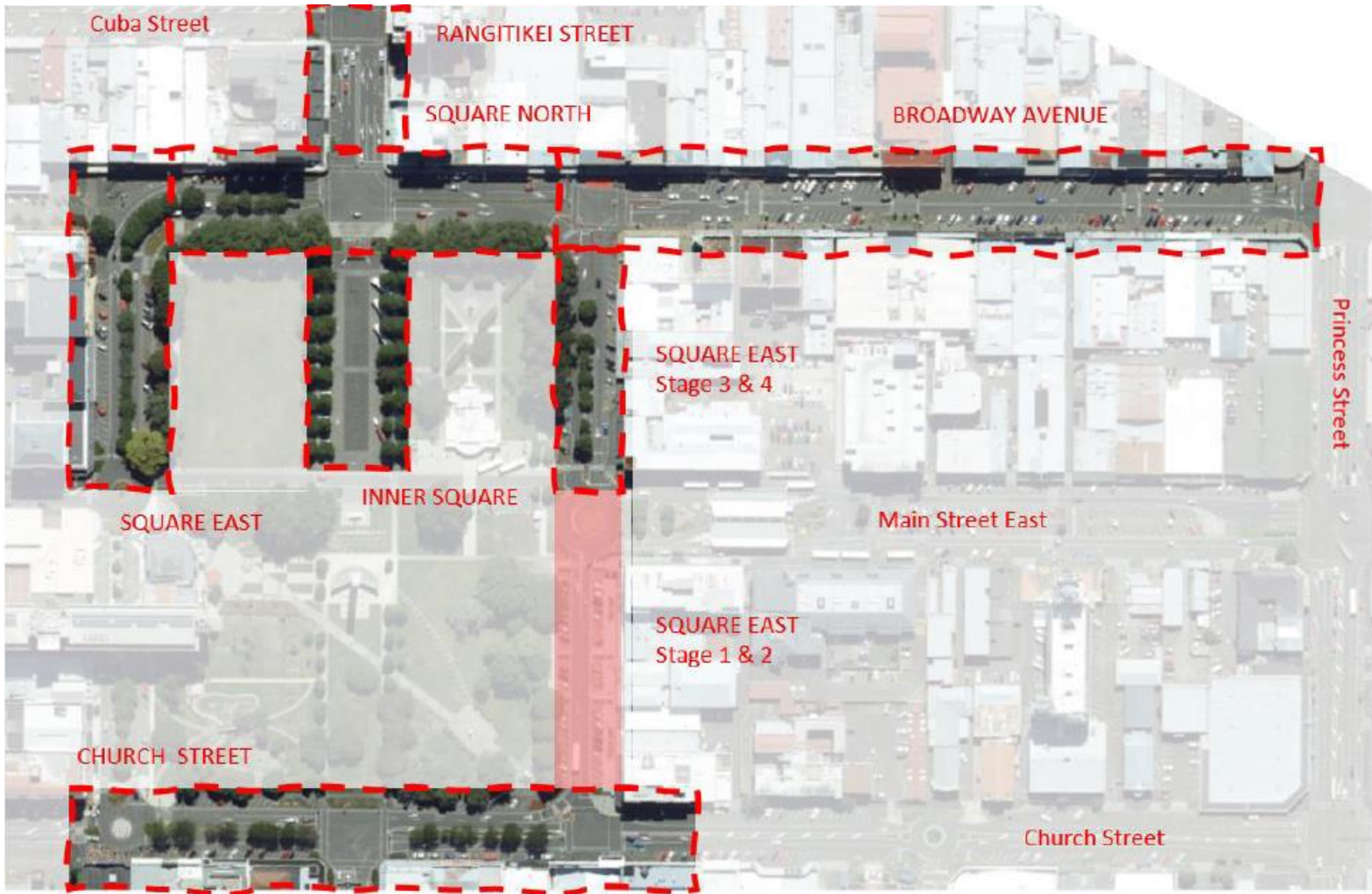
Bus Terminal

- Interim Inter-Regional Bus Terminal
- Public Transport Improvements - Horizons Regional Council
- Major Upgrade of Palmerston North Public Transport Terminal Facilities

PROJECT BACKGROUND



PROJECT BACKGROUND



Outcomes

- New wider footpaths
- On street parking optimisation
- Improved street amenity, including trees and seating

PROJECT BACKGROUND



Possible Outcomes

- All road users' safety
- Walking and Cycling prioritisation
- Public transport optimisation
- Mobility accessibility and efficiency
- Climate change responses
- City urbanization and amenity





OBSERVED OPPORTUNITIES

- ▶ Overarching view through business case approach
- ▶ Enabling progression of PNITI and supports development of the freight road.
- ▶ Better understanding on the scale of impact and importance of a reconfigured central city across different projects
- ▶ Opportunities to further enhance clarity and alignment with stakeholders
- ▶ Opportunity to access Waka Kotahi funding









STRATEGIC ALIGNMENT

- ▶ Aligns with City Centre Framework Strategy - a thriving, vibrant, and culturally inclusive city center
- ▶ Supports the citywide goals to be:
 - ▶ an innovative and growing city
 - ▶ a creative and exciting city
 - ▶ a connected and safe city
 - ▶ an eco-city
- ▶ Be in line with the city's long-term developmental goals, contributing to economic growth and community well-being.

OBJECTIVES AND BENEFITS



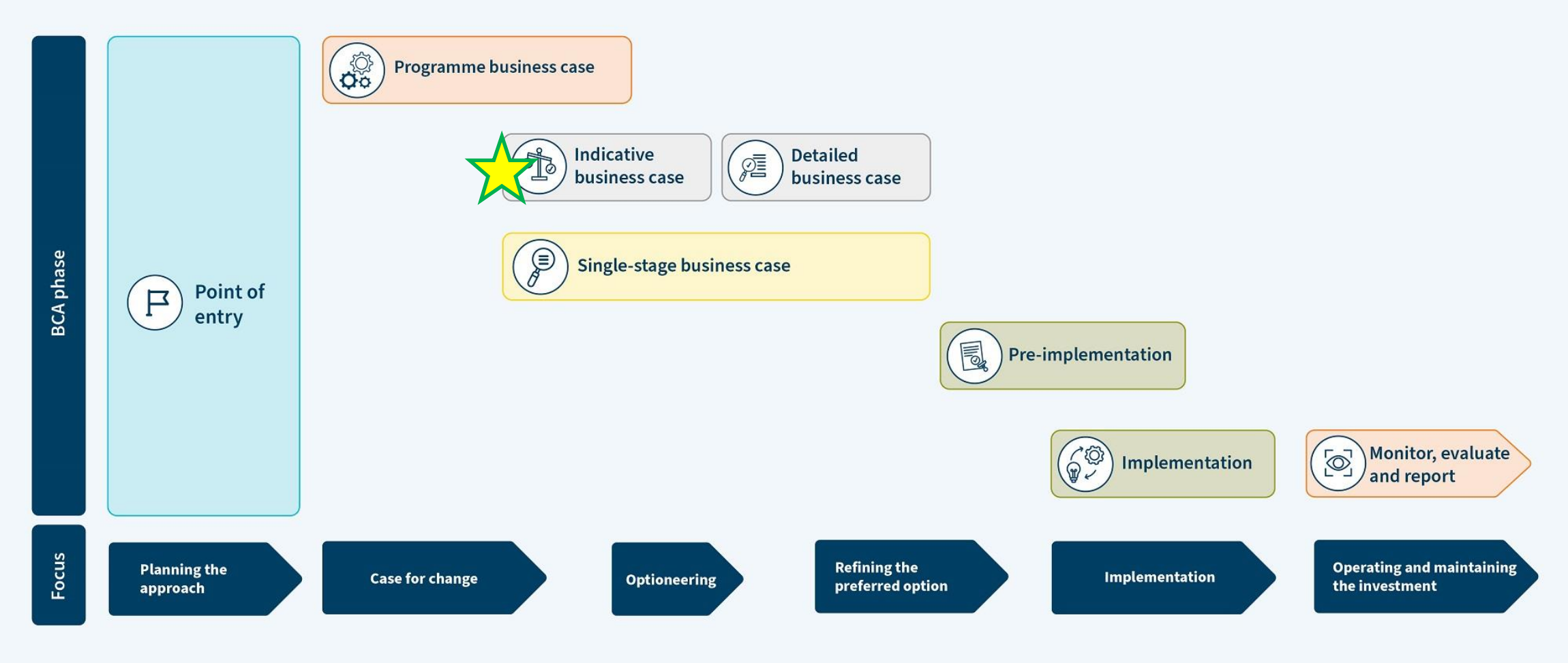
-  Provide a comprehensive and overarching evaluation of ongoing and proposed capital projects against city-wide goals
-  Enhancing public transport accessibility
-  Identify additional quick wins
-  Align with Waka Kotahi's Intervention Hierarchy and maximise opportunities for accessing Waka Kotahi co-funding and/or other funding sources
-  Demonstrate the optimal value for money package of investments
-  Set out a clear implementation programme which reflects: →



1. the outcomes delivered for the investment made
2. interdependency of activities
3. implementation risk

DEVELOPMENT PROCESS

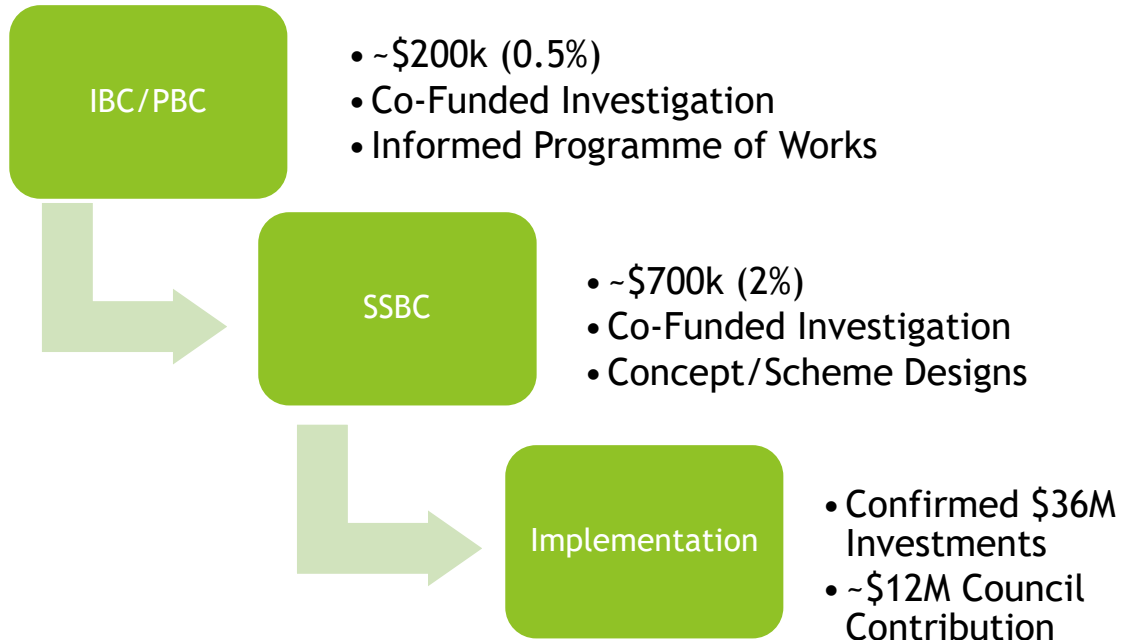
► *Business Case Approach - Waka Kotahi*



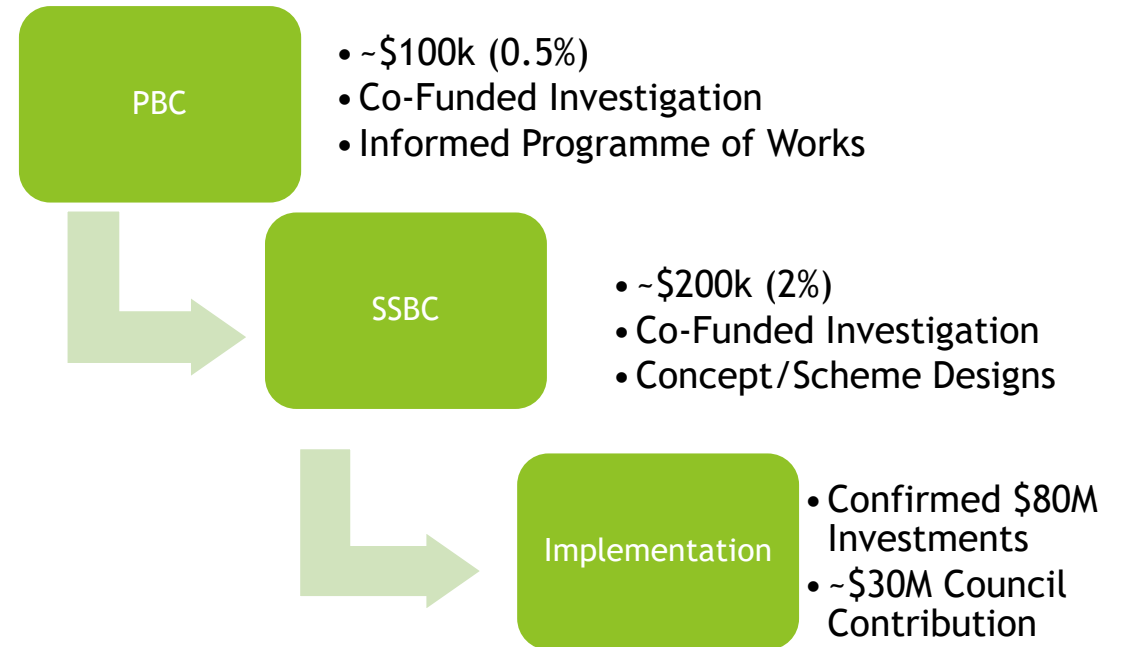
BUSINESS CASE EXAMPLES



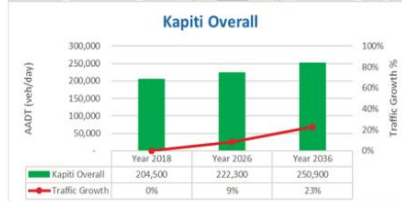
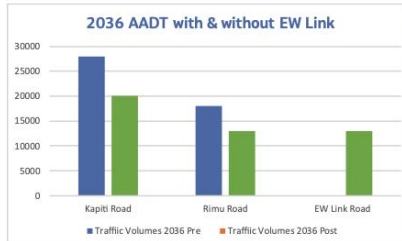
Town Centre Upgrade



Walking and Cycling Network



BUSINESS CASE EXAMPLES



Problem 1: Inadequate east-west connections are limiting economic development
Problem 2: Congestion on the arterial road network leads to an increase in through traffic on residential streets

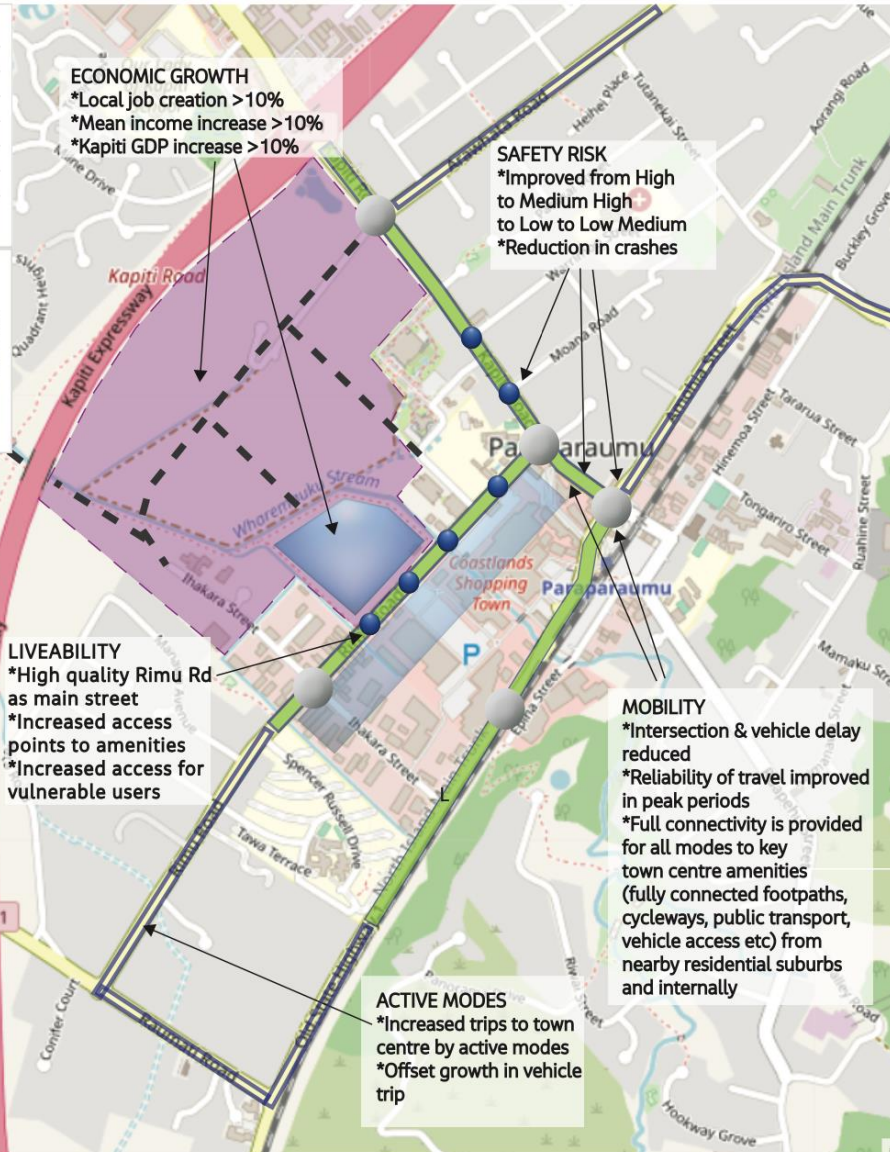
Investment Objective: Economic Growth
 Enable economic growth by increasing access to the Paraparaumu economic centres

Investment Objective: Liveability
 Improve the liveability of the town centre by improving access for key retail and civic areas

Investment Objective: Mode Choice
 Improve the % of people travelling to the town centre by active modes and public transport

Investment Objective: Safety
 Improve the safety risk for the town centre network

- Legend**
- Development Area
 - EW Link Road
 - Retail Frontage
 - Footpath Upgrades
 - Enhanced Road Function
 - New/Upgraded Crossings
 - Intersection Upgrades



PROGRAMME

Theme	Option						
Safety	Speed Management Physical road changes for town centre to force speed reductions (Rimu Rd, Kapiti Rd, Main Rd)						
	Vulnerable Users Safer crossing places Separation of vulnerable users from traffic Gateway features, road narrowing and landscaping for Rimu Road School and workplace safe travel plan and advertising Increased training initiatives for active modes						
	Persons in vehicles Short-term tactical urbanism projects focussed around town centre Skid resistance upgrades						
Demand Management	Travel planning School and workplace travel planning						
Modal Choice	Active Modes New/upgraded pedestrian footpaths leading to and within the town centre						
Land Use	Residential Commercial Increased access to new and existing commercial areas Policy changes to allow increased residential density near town centre						
	Road Function	<table border="1"> <tr> <td>Rimu Road Function</td> <td>Enhanced people and place function</td> </tr> <tr> <td>Main Road Function</td> <td>Enhanced access function Enhanced arterial road function for all modes</td> </tr> <tr> <td>Proposed Kapiti EW Link function</td> <td>Enhanced collector/arterial road function for all modes</td> </tr> </table>	Rimu Road Function	Enhanced people and place function	Main Road Function	Enhanced access function Enhanced arterial road function for all modes	Proposed Kapiti EW Link function
Rimu Road Function	Enhanced people and place function						
Main Road Function	Enhanced access function Enhanced arterial road function for all modes						
Proposed Kapiti EW Link function	Enhanced collector/arterial road function for all modes						

BUSINESS CASE EXAMPLES



MEANINGFUL ENGAGEMENT APPROACHES



DRAFT ENGAGEMENT APPROACH



Stakeholders	Problem & Objectives	Strategic	Optioneering	Preferred Option	IBC
Councilors and Elected members					
PINITI Governance					
Relevant Departments					
HDC					
Waka Kotahi					
Mana Whenua					
Local Community Representatives					
General Public					

LEGEND

- One-on-one discussions
- Survey
- Workshops
- Wider Engagement
- Briefing

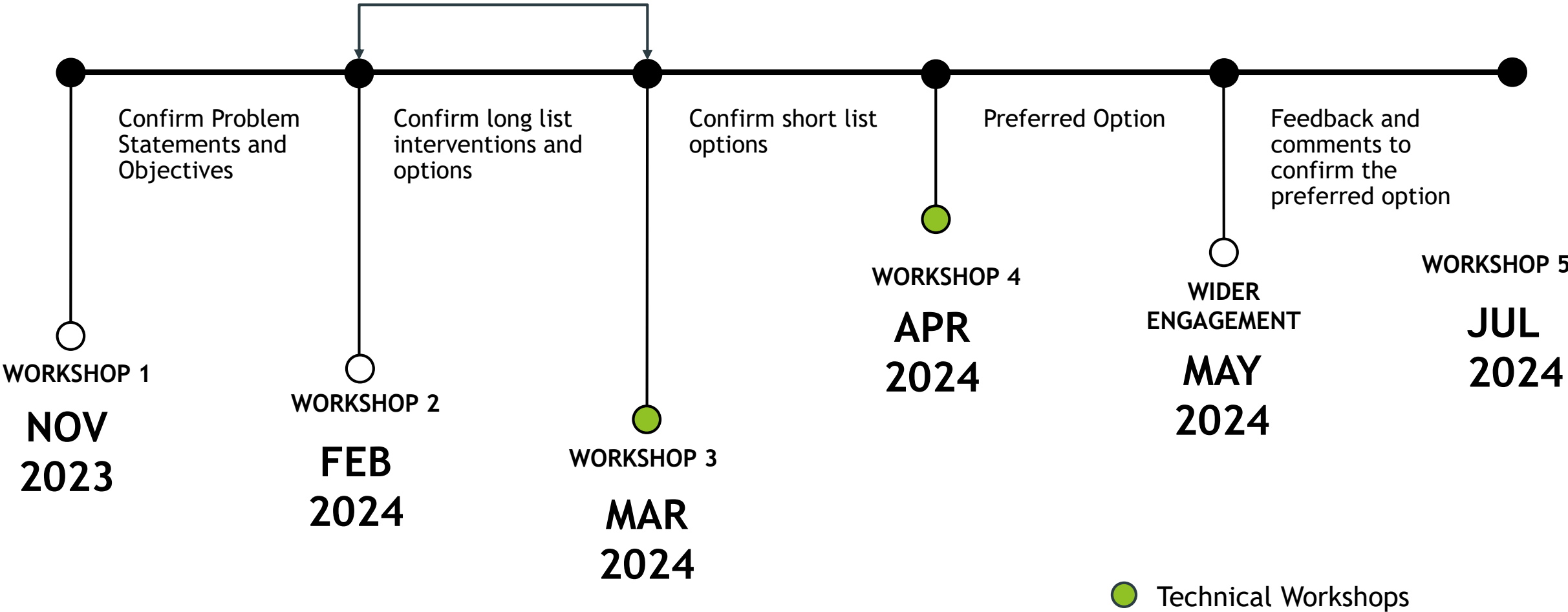
Workshop potential representatives



- ▶ PNCC elected members
- ▶ Rangitāne
- ▶ Horizons
- ▶ Waka Kotahi
- ▶ Chamber of Commerce & Palmy BID
- ▶ Business Community Representatives
- ▶ Safety Advisory Board
- ▶ Bus Operators

TIMELINE

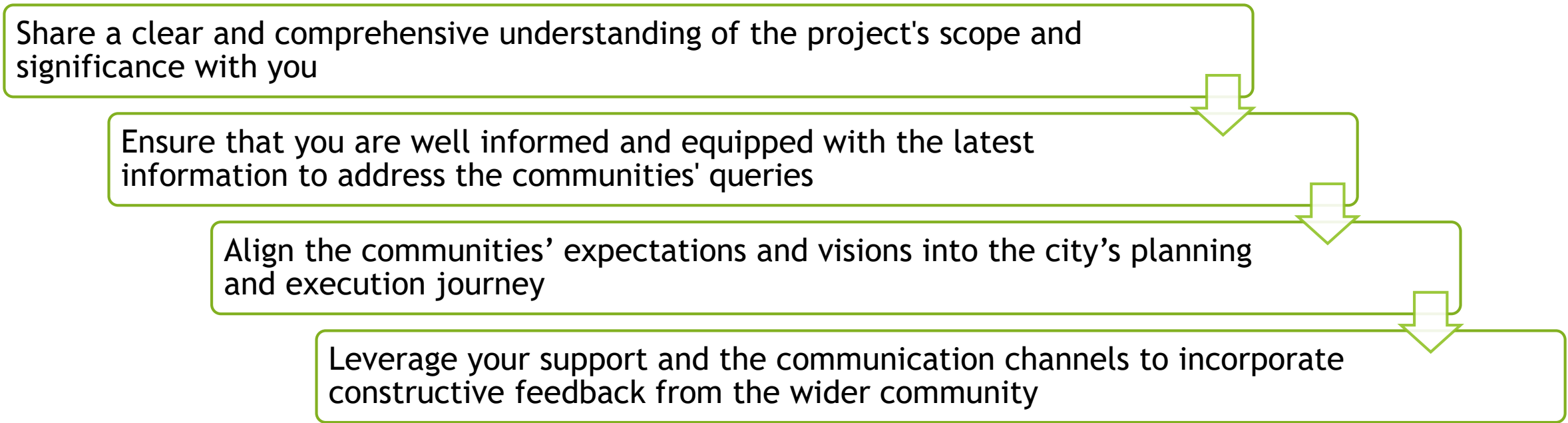
WS2&3 Potentially Combine



YOUR ROLE AND SUPPORT



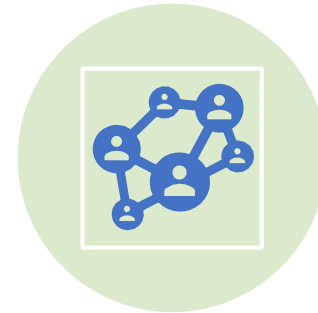
- ✓ OBTAINING SUPPORT
- ✓ ALIGNING VISION
- ✓ COMMUNICATION BRIDGE



YOUR ROLE AND SUPPORT



Join us in City Centre development, a transformative initiative that echoes the aspirations of the city's communities and aims to achieve our goals of a Creative and Exciting City that supports connected and safe communities.



Palmy's communities are at the heart of our project. Through collaboration, we can ensure that their voices are heard, their concerns are addressed, and their visions are realised in the City Centre's transformation plan.



By partnering together, we can foster deeper connections, gather genuine feedback, and ensure our project reflects the diverse tapestry of our community.



We aim to make informed and holistic decisions with your expertise and understanding of community needs. Your guidance is invaluable in aligning project objectives with community benefits.

NEXT STEP

- ▶ Strategic Context
- ▶ Refine Problems and Benefits
- ▶ Risk Assessment
- ▶ Investment Objectives
- ▶ Workshop 1 in later November 2023