

PLAN NUMBER 6365

FEATHERSTON STREET CYCLEWAY

DETAILED DESIGN

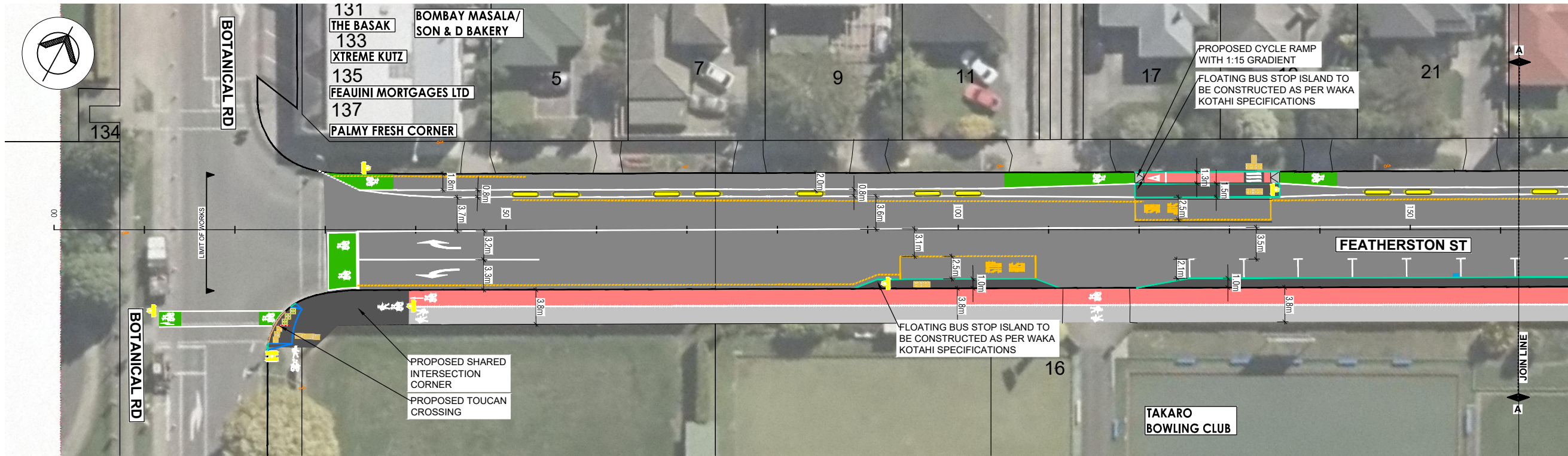


NOT FOR
CONSTRUCTION

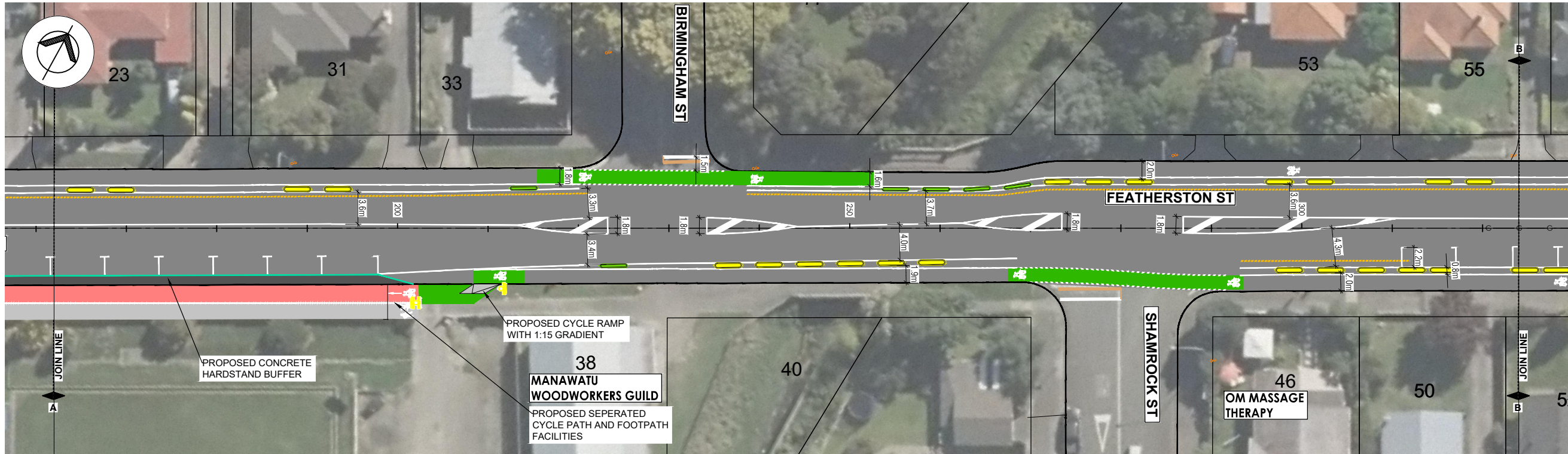
SHEET	DRAWING TITLE	REVIEW							
G01	COVER SHEET	A							
G02	DRAWING REGISTER	A							
C10	EXISTING TOPO	A							
C30	ROAD LAYOUT PLANS	A							
C80	VEHICLE TRACKING	A							
C100	VISIBILITY PLANS	A							
		24							
		08							
		23							



FOR COMMENT ONLY



PLAN A
Scale 1:250 A1



PLAN B
Scale 1:250 A1

NOT FOR
CONSTRUCTION

FOR COMMENT ONLY

LEGEND

- SAFETY PLATFORM RAMP
- EXISTING LINE MARKINGS
- WHITE LINE MARKINGS
- YELLOW LINE MARKINGS
- CYCLE LANE (Apple Green)
- LEFT TURN LANE ARROW
- RIGHT TURN LANE ARROW
- GIVE WAY TRIANGLE
- ADVANCED WARNING
- CYCLE SEPARATOR (600mm)
- CYCLE SEPARATOR (400mm)
- PROPOSED SIGN
- RELOCATED STREETLIGHT

- NOTES:
1. All road marking and signage to be in accordance with TCDM standards and supplemented by MOTSAM Part 1 and 2 where necessary.
 2. Warning and directional facilities to be set out and installed in accordance with RTS14 guidelines.
 3. New and existing storm water sump grates to be cycle friendly.
 4. A streetlighting review and design is to be undertaken to ensure the position and luminance requirements are met.
 5. Cycle separators are 3m long with 1.5m gap.

REV	AMENDMENTS	INITIAL	DATE
A	50% DESIGN	DG	24.08.23



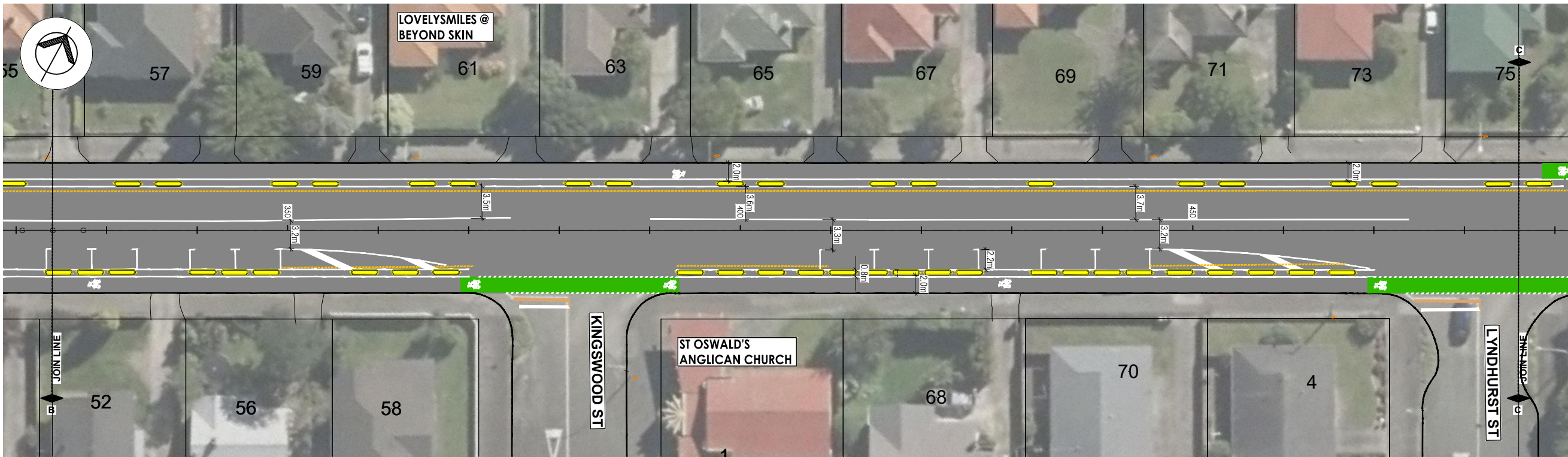
PROGRAMME PROJECT
JOB TITLE
FEATHERSTON STREET
CYCLEWAY DETAILED
DESIGN

DRAWING TITLE
ROAD LAYOUT
SHEET ONE OF ELEVEN

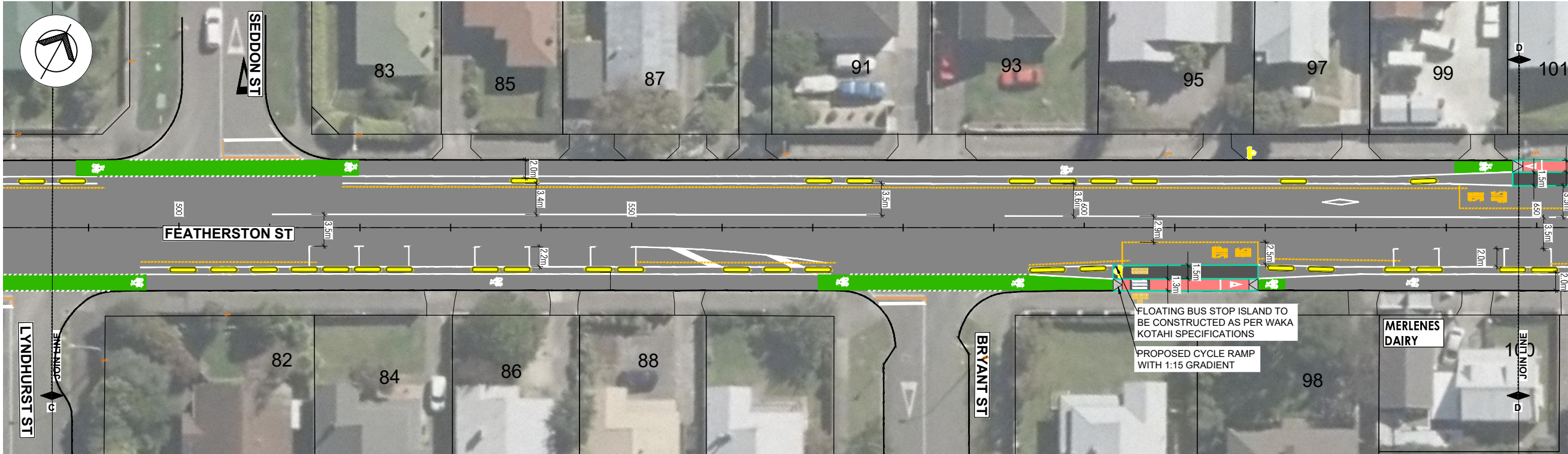
	NAME	SIGNED	DATE
DESIGNED	PM		24.08.23
DES. REVIEW	GB		24.08.23
DRAWN	KL		24.08.23
DRW. CHECK	DG/PM		24.08.23

APPROVED FOR TENDER	
DATE	SIGNED
FOR CONSTRUCTION	
DATE	SIGNED
HAMISH FEATONBY - GROUP MAN. - TRANSPORT & DEV	
STUART CARTWRIGHT - CHIEF ENGINEER - APPROVED	

SCALES	A1 1:250	A3 1:500
PNCC No.	6365	
CONSULTANT No.	5-P1569.DD	
DATE	DRAWING No.	REVISION
24.08.23	C30	A



PLAN C
Scale 1:250 A1



PLAN D
Scale 1:250 A1

NOT FOR
CONSTRUCTION

LEGEND

SAFETY PLATFORM RAMP

EXISTING LINE MARKINGS

WHITE LINE MARKINGS

YELLOW LINE MARKINGS

CYCLE LANE (Apple Green)

LEFT TURN LANE ARROW

RIGHT TURN LANE ARROW

GIVE WAY TRIANGLE

ADVANCED WARNING

CYCLE SEPARATOR (600mm)

CYCLE SEPARATOR (400mm)

PROPOSED SIGN

RELOCATED STREETLIGHT

FOR COMMENT ONLY

- NOTES:
1. All road marking and signage to be in accordance with TCDM standards and supplemented by MOTSAM Part 1 and 2 where necessary.
 2. Warning and directional facilities to be set out and installed in accordance with RTS14 guidelines.
 3. New and existing storm water sump grates to be cycle friendly.
 4. A streetlighting review and design is to be undertaken to ensure the position and luminance requirements are met.
 5. Cycle separators are 3m long with 1.5m gap.

REV	AMENDMENTS	INITIAL	DATE
A	50% DESIGN	DG	24.08.23



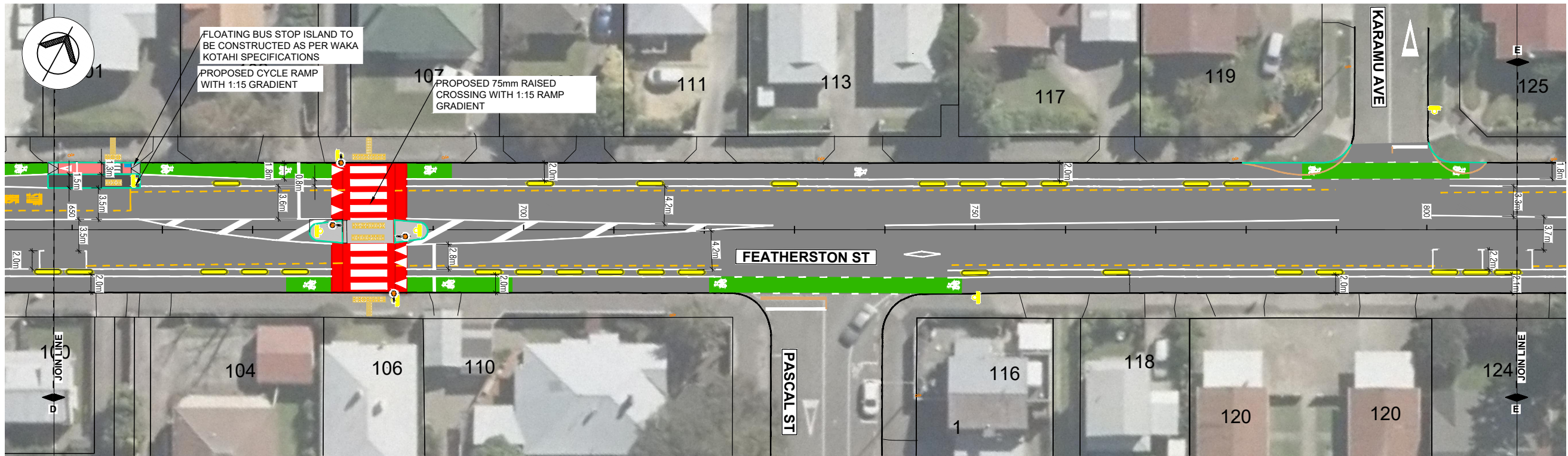
PROGRAMME PROJECT
JOB TITLE
FEATHERSTON STREET
CYCLEWAY DETAILED
DESIGN

DRAWING TITLE
ROAD LAYOUT
SHEET TWO OF ELEVEN

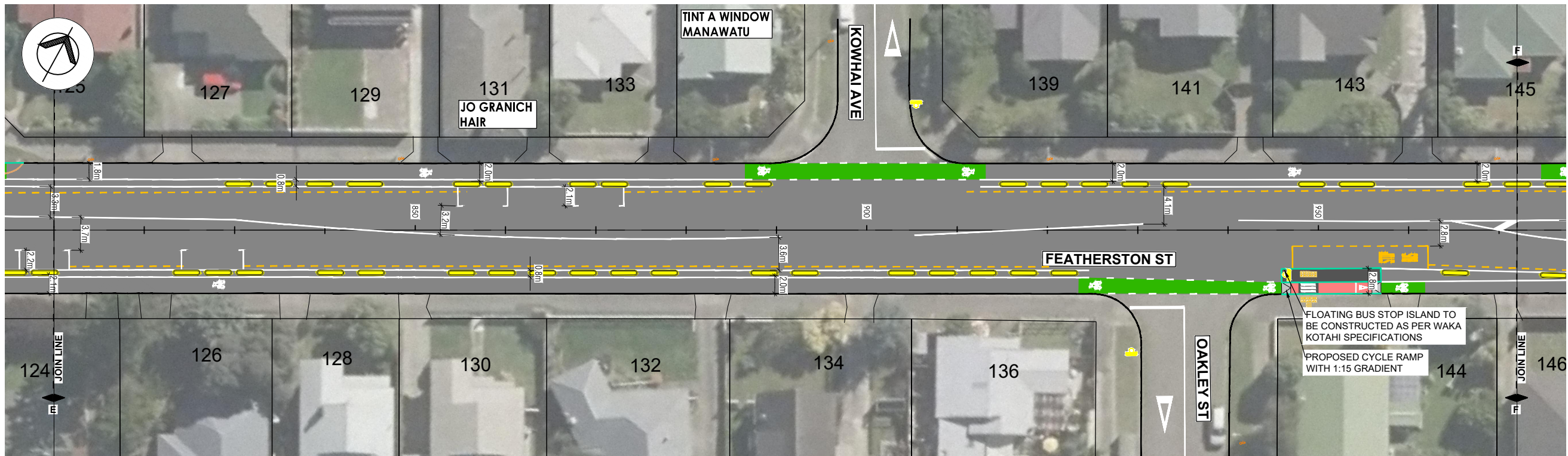
	NAME	SIGNED	DATE
DESIGNED	PM		24.08.23
DES. REVIEW	GB		24.08.23
DRAWN	KL		24.08.23
DRW. CHECK	DG/PM		24.08.23

APPROVED FOR TENDER	
DATE	SIGNED
FOR CONSTRUCTION	
DATE	SIGNED
HAMISH FEATONBY - GROUP MAN. - TRANSPORT & DEV	
STUART CARTWRIGHT - CHIEF ENGINEER - APPROVED	

SCALES	A1 1:250	A3 1:500
PNCC No.	6365	
CONSULTANT No.	5-P1569.DD	
DATE	DRAWING No.	REVISION
24.08.23	C31	A



PLAN E
Scale 1:250 A1



PLAN F
Scale 1:250 A1

NOT FOR
CONSTRUCTION

LEGEND

SAFETY PLATFORM RAMP

EXISTING LINE MARKINGS

WHITE LINE MARKINGS

YELLOW LINE MARKINGS

CYCLE LANE (Apple Green)

LEFT TURN LANE ARROW

RIGHT TURN LANE ARROW

GIVE WAY TRIANGLE

ADVANCED WARNING

CYCLE SEPARATOR (600mm)

CYCLE SEPARATOR (400mm)

PROPOSED SIGN

RELOCATED STREETLIGHT

FOR COMMENT ONLY

- NOTES:
1. All road marking and signage to be in accordance with TCDM standards and supplemented by MOTSAM Part 1 and 2 where necessary.
 2. Warning and directional facilities to be set out and installed in accordance with RTS14 guidelines.
 3. New and existing storm water sump grates to be cycle friendly.
 4. A streetlighting review and design is to be undertaken to ensure the position and luminance requirements are met.
 5. Cycle separators are 3m long with 1.5m gap.

REV	AMENDMENTS	INITIAL	DATE
A	50% DESIGN	DG	24.08.23



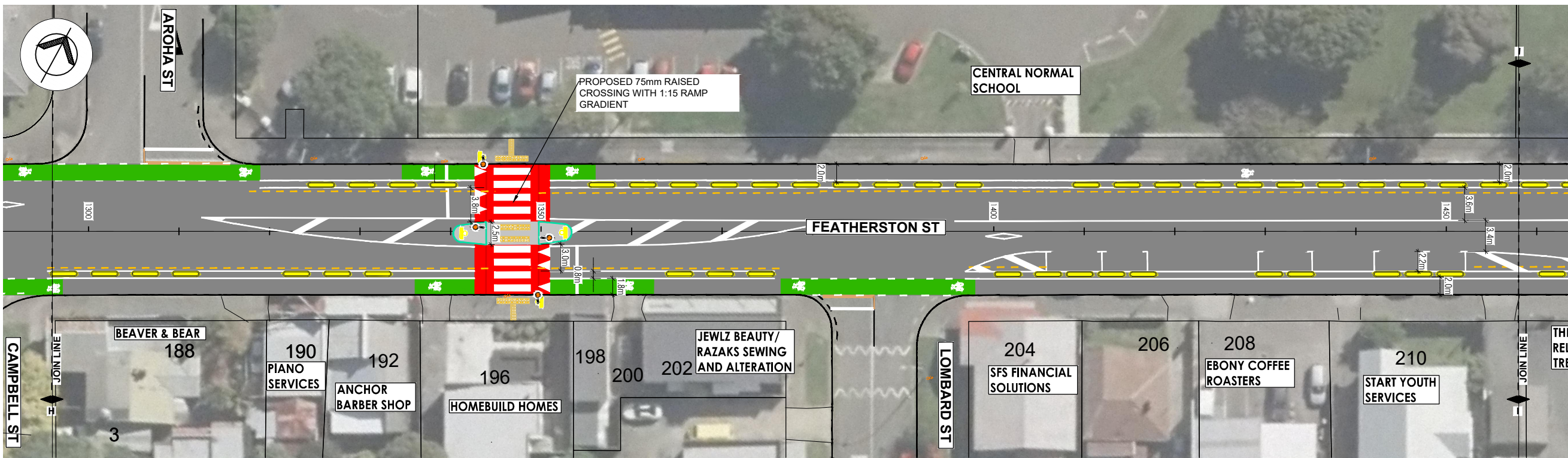
PROGRAMME	PROJECT
JOB TITLE	FEATHERSTON STREET CYCLEWAY DETAILED DESIGN

DRAWING TITLE
ROAD LAYOUT
SHEET THREE OF ELEVEN

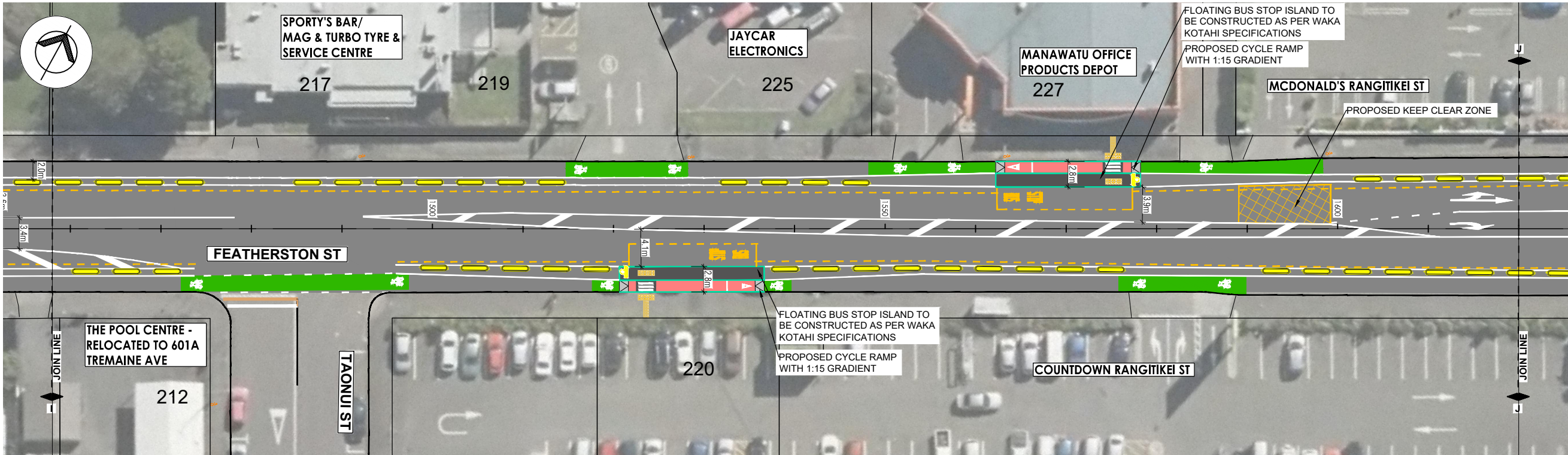
	NAME	SIGNED	DATE
DESIGNED	PM		24.08.23
DES. REVIEW	GB		24.08.23
DRAWN	KL		24.08.23
DRW. CHECK	DG/PM		24.08.23

APPROVED FOR TENDER	
DATE	SIGNED
FOR CONSTRUCTION	
DATE	SIGNED
HAMISH FEATONBY - GROUP MAN. - TRANSPORT & DEV	
STUART CARTWRIGHT - CHIEF ENGINEER - APPROVED	

SCALES	A1 1:250	A3 1:500
PNCC No.	6365	
CONSULTANT No.	5-P1569.DD	
DATE	DRAWING No.	REVISION
24.08.23	C32	A



PLAN I
Scale 1:250 A1



PLAN J
Scale 1:250 A1

NOT FOR
CONSTRUCTION

LEGEND			
SAFETY PLATFORM RAMP			
EXISTING LINE MARKINGS			
WHITE LINE MARKINGS			
YELLOW LINE MARKINGS			
CYCLE LANE (Apple Green)			
LEFT TURN LANE ARROW			
RIGHT TURN LANE ARROW			
GIVE WAY TRIANGLE			
ADVANCED WARNING			
CYCLE SEPARATOR (600mm)			
CYCLE SEPARATOR (400mm)			
PROPOSED SIGN			
RELOCATED STREETLIGHT			

FOR COMMENT ONLY

- NOTES:
1. All road marking and signage to be in accordance with TCDM standards and supplemented by MOTSAM Part 1 and 2 where necessary.
 2. Warning and directional facilities to be set out and installed in accordance with RTS14 guidelines.
 3. New and existing storm water sump gates to be cycle friendly.
 4. A streetlighting review and design is to be undertaken to ensure the position and luminance requirements are met.
 5. Cycle separators are 3m long with 1.5m gap.

REV	AMENDMENTS	INITIAL	DATE
A	50% DESIGN	DG	24.08.23



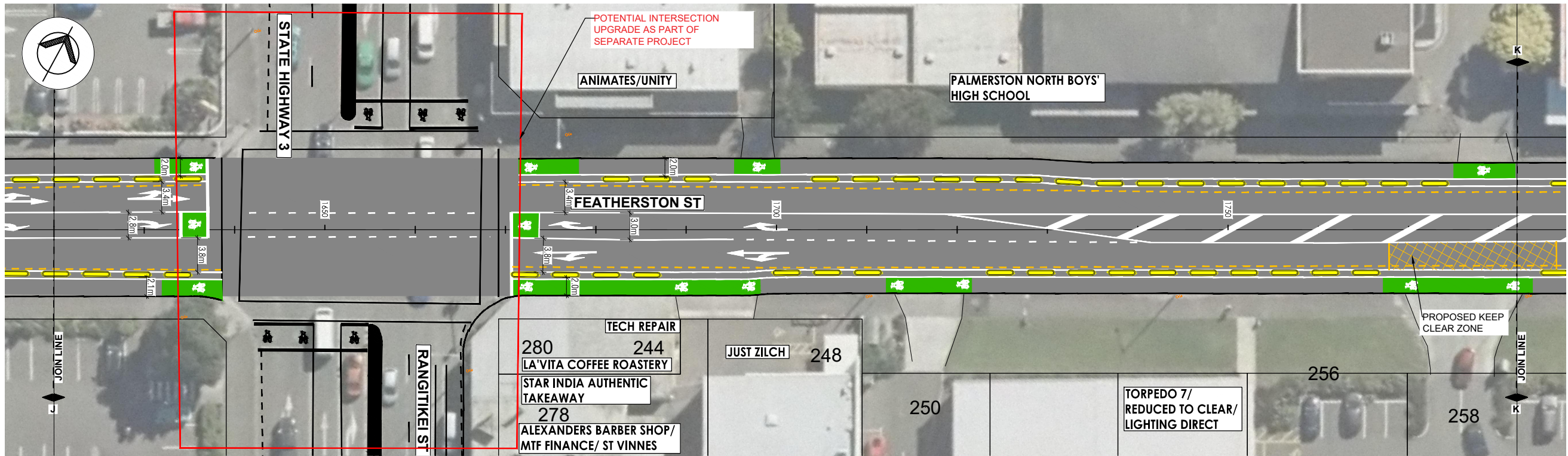
PROGRAMME	PROJECT
JOB TITLE	FEATHERSTON STREET CYCLEWAY DETAILED DESIGN

DRAWING TITLE
ROAD LAYOUT SHEET FIVE OF ELEVEN

	NAME	SIGNED	DATE
DESIGNED	PM		24.08.23
DES. REVIEW	GB		24.08.23
DRAWN	KL		24.08.23
DRW. CHECK	DG/PM		24.08.23

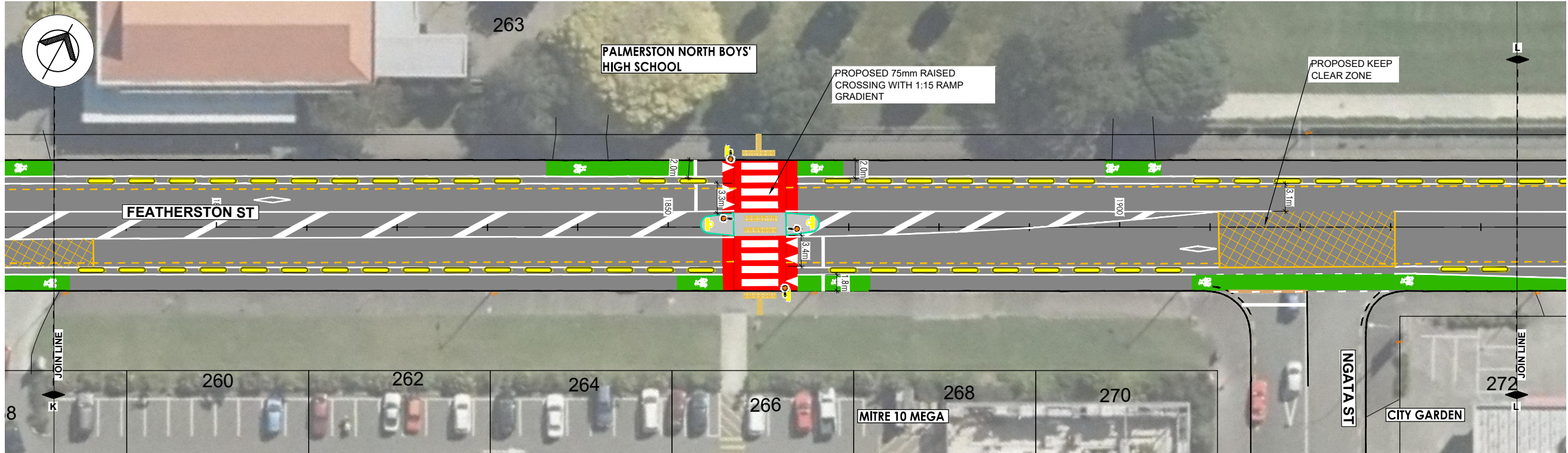
APPROVED FOR TENDER	
DATE	SIGNED
FOR CONSTRUCTION	
DATE	SIGNED
HAMISH FEATONBY - GROUP MAN. - TRANSPORT & DEV	
STUART CARTWRIGHT - CHIEF ENGINEER - APPROVED	

SCALES	A1 1:250	A3 1:500
PNCC No.	6365	
CONSULTANT No.	5-P1569.DD	
DATE	DRAWING No.	REVISION
24.08.23	C34	A



PLAN K

Scale 1:250 A1



PLAN L

Scale 1:250 A1

NOT FOR
CONSTRUCTION

LEGEND			
SAFETY PLATFORM RAMP			
EXISTING LINE MARKINGS			
WHITE LINE MARKINGS			
YELLOW LINE MARKINGS			
CYCLE LANE (Apple Green)			
LEFT TURN LANE ARROW			
RIGHT TURN LANE ARROW			
GIVE WAY TRIANGLE			
ADVANCED WARNING			
CYCLE SEPARATOR (600mm)			
CYCLE SEPARATOR (400mm)			
PROPOSED SIGN			
RELOCATED STREETLIGHT			

FOR COMMENT ONLY

- NOTES:
1. All road marking and signage to be in accordance with TCDM standards and supplemented by MOTSAM Part 1 and 2 where necessary.
 2. Warning and directional facilities to be set out and installed in accordance with RTS14 guidelines.
 3. New and existing storm water sump grates to be cycle friendly.
 4. A streetlighting review and design is to be undertaken to ensure the position and luminance requirements are met.
 5. Cycle separators are 3m long with 1.5m gap.

REV	AMENDMENTS	INITIAL	DATE
A	50% DESIGN	DG	24.08.23



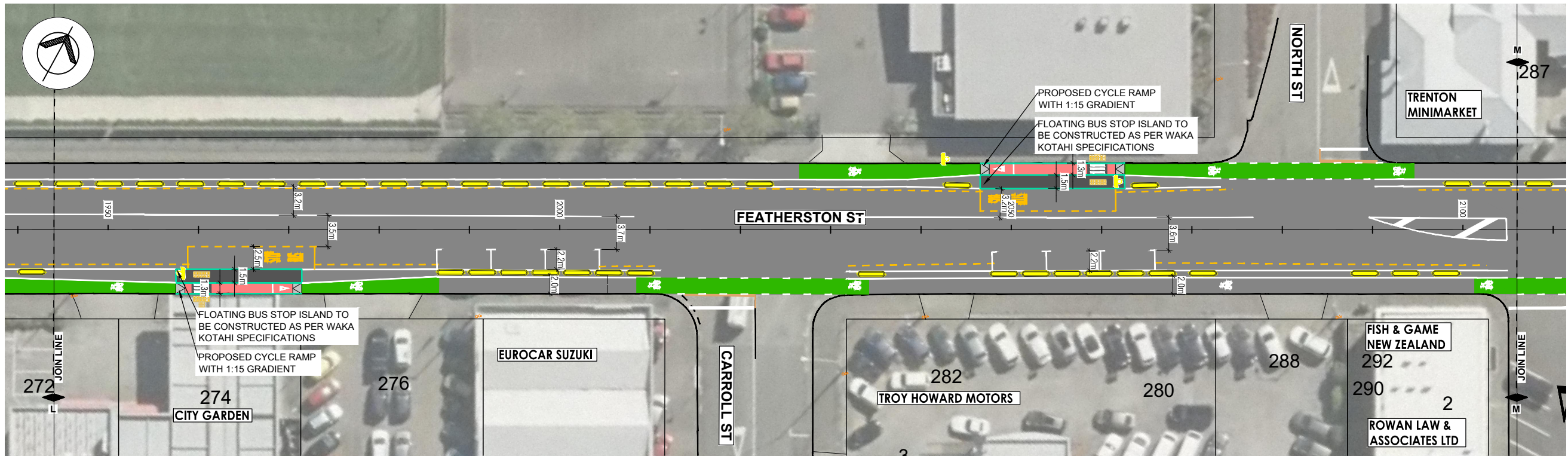
PROGRAMME	PROJECT
JOB TITLE	FEATHERSTON STREET CYCLEWAY DETAILED DESIGN

DRAWING TITLE	ROAD LAYOUT SHEET SIX OF ELEVEN
---------------	---------------------------------

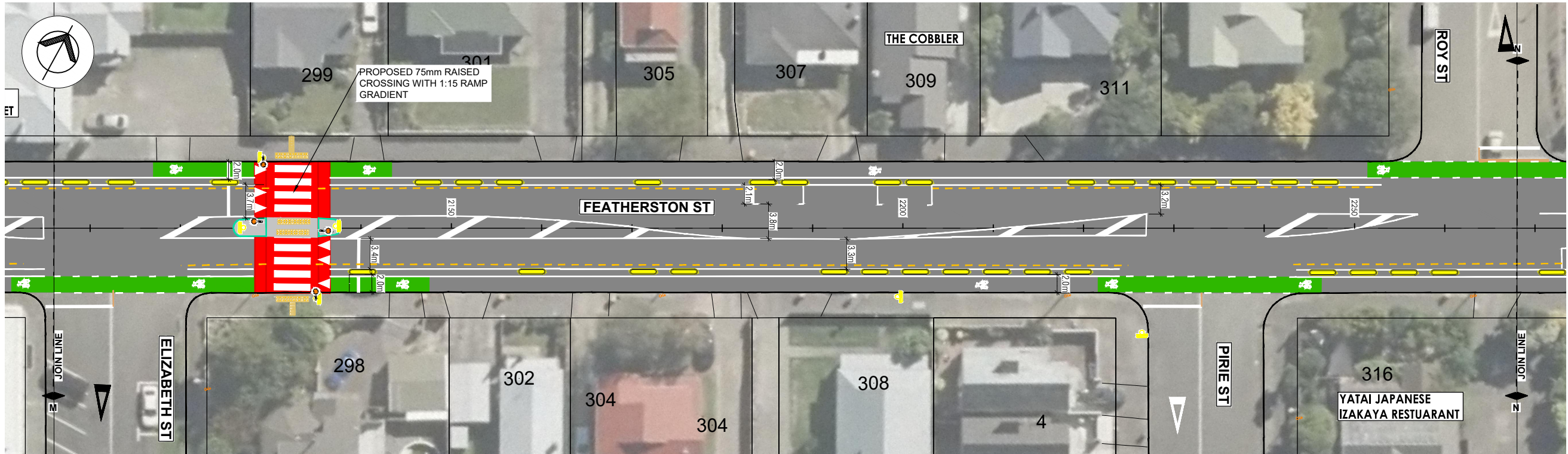
DESIGNED	NAME	SIGNED	DATE
DES. REVIEW	PM		24.08.23
DRAWN	GB		24.08.23
DRW. CHECK	KL		24.08.23
	DG/PM		24.08.23

APPROVED FOR TENDER	
DATE	SIGNED
FOR CONSTRUCTION	
DATE	SIGNED
HAMISH FEATONBY - GROUP MAN. - TRANSPORT & DEV	
STUART CARTWRIGHT - CHIEF ENGINEER - APPROVED	

SCALES	A1 1:250	A3 1:500
PNCC No.	6365	
CONSULTANT No.	5-P1569.DD	
DATE	DRAWING No.	REVISION
24.08.23	C35	A



PLAN M
Scale 1:250 A1



PLAN N
Scale 1:250 A1

NOT FOR
CONSTRUCTION

LEGEND			
SAFETY PLATFORM RAMP			
EXISTING LINE MARKINGS			
WHITE LINE MARKINGS			
YELLOW LINE MARKINGS			
CYCLE LANE (Apple Green)			
LEFT TURN LANE ARROW			
RIGHT TURN LANE ARROW			
GIVE WAY TRIANGLE			
ADVANCED WARNING			
CYCLE SEPERATOR (600mm)			
CYCLE SEPERATOR (400mm)			
PROPOSED SIGN			
RELOCATED STREETLIGHT			

FOR COMMENT ONLY

- NOTES:
1. All road marking and signage to be in accordance with TCDM standards and supplemented by MOTSAM Part 1 and 2 where necessary.
 2. Warning and directional facilities to be set out and installed in accordance with RTS14 guidelines.
 3. New and existing storm water sump grates to be cycle friendly.
 4. A streetlighting review and design is to be undertaken to ensure the position and luminance requirements are met.
 5. Cycle separators are 3m long with 1.5m gap.

REV	AMENDMENTS	INITIAL	DATE
A	50% DESIGN	DG	24.08.23



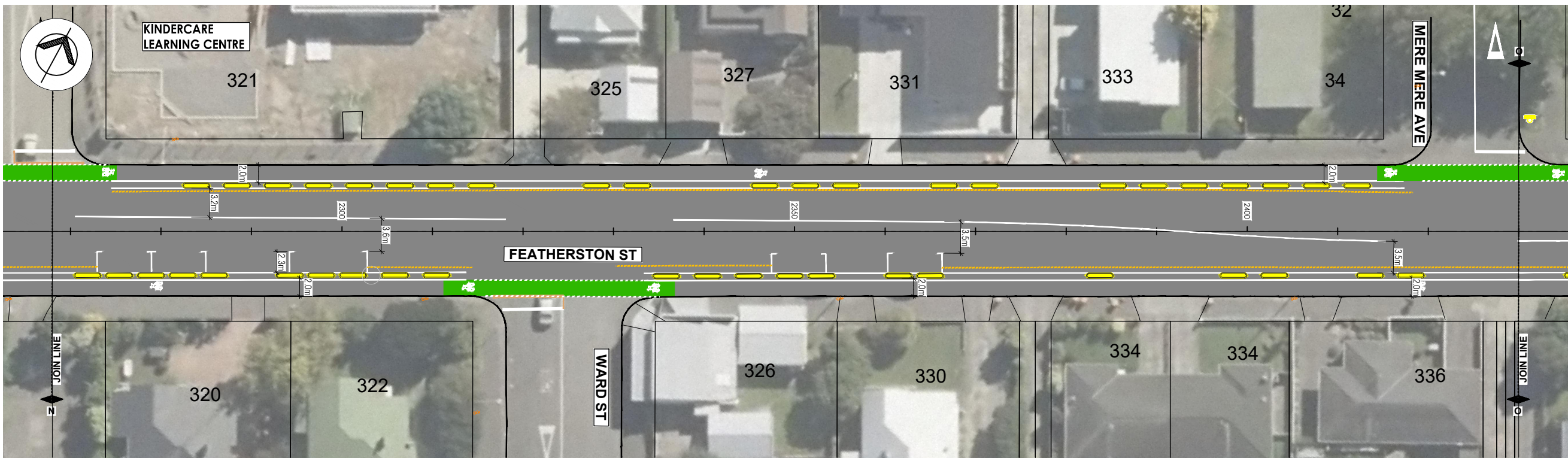
PROGRAMME	PROJECT
JOB TITLE	FEATHERSTON STREET CYCLEWAY DETAILED DESIGN

DRAWING TITLE
ROAD LAYOUT SHEET SEVEN OF ELEVEN

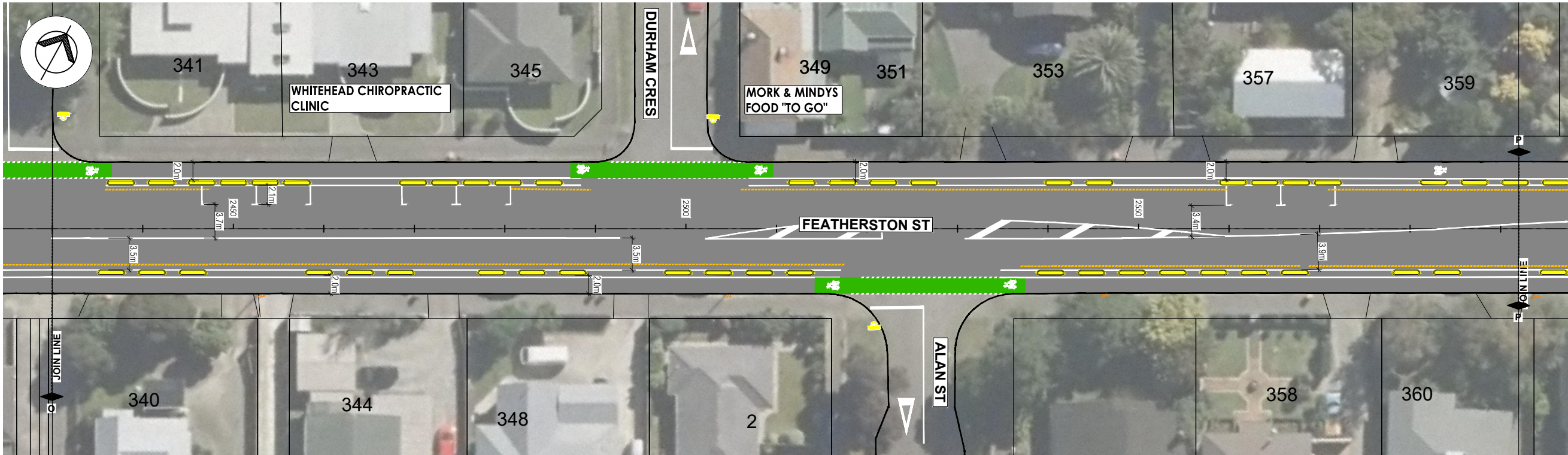
	NAME	SIGNED	DATE
DESIGNED	PM		24.08.23
DES. REVIEW	GB		24.08.23
DRAWN	KL		24.08.23
DRW. CHECK	DG/PM		24.08.23

APPROVED FOR TENDER	
DATE	SIGNED
FOR CONSTRUCTION	
DATE	SIGNED
HAMISH FEATONBY - GROUP MAN. - TRANSPORT & DEV	
STUART CARTWRIGHT - CHIEF ENGINEER - APPROVED	

SCALES	A1 1:250	A3 1:500
PNCC No.	6365	
CONSULTANT No.	5-P1569.DD	
DATE	DRAWING No.	REVISION
24.08.23	C36	A



PLAN O
Scale 1:250 A1



PLAN P
Scale 1:250 A1

NOT FOR
CONSTRUCTION

LEGEND

SAFETY PLATFORM RAMP

EXISTING LINE MARKINGS

WHITE LINE MARKINGS

YELLOW LINE MARKINGS

CYCLE LANE (Apple Green)

LEFT TURN LANE ARROW

RIGHT TURN LANE ARROW

GIVE WAY TRIANGLE

ADVANCED WARNING

CYCLE SEPARATOR (600mm)

CYCLE SEPARATOR (400mm)

PROPOSED SIGN

RELOCATED STREETLIGHT

FOR COMMENT ONLY

- NOTES:
1. All road marking and signage to be in accordance with TCDM standards and supplemented by MOTSAM Part 1 and 2 where necessary.
 2. Warning and directional facilities to be set out and installed in accordance with RTS14 guidelines.
 3. New and existing storm water sump grates to be cycle friendly.
 4. A streetlighting review and design is to be undertaken to ensure the position and luminance requirements are met.
 5. Cycle separators are 3m long with 1.5m gap.

REV	AMENDMENTS	INITIAL	DATE
A	50% DESIGN	DG	24.08.23



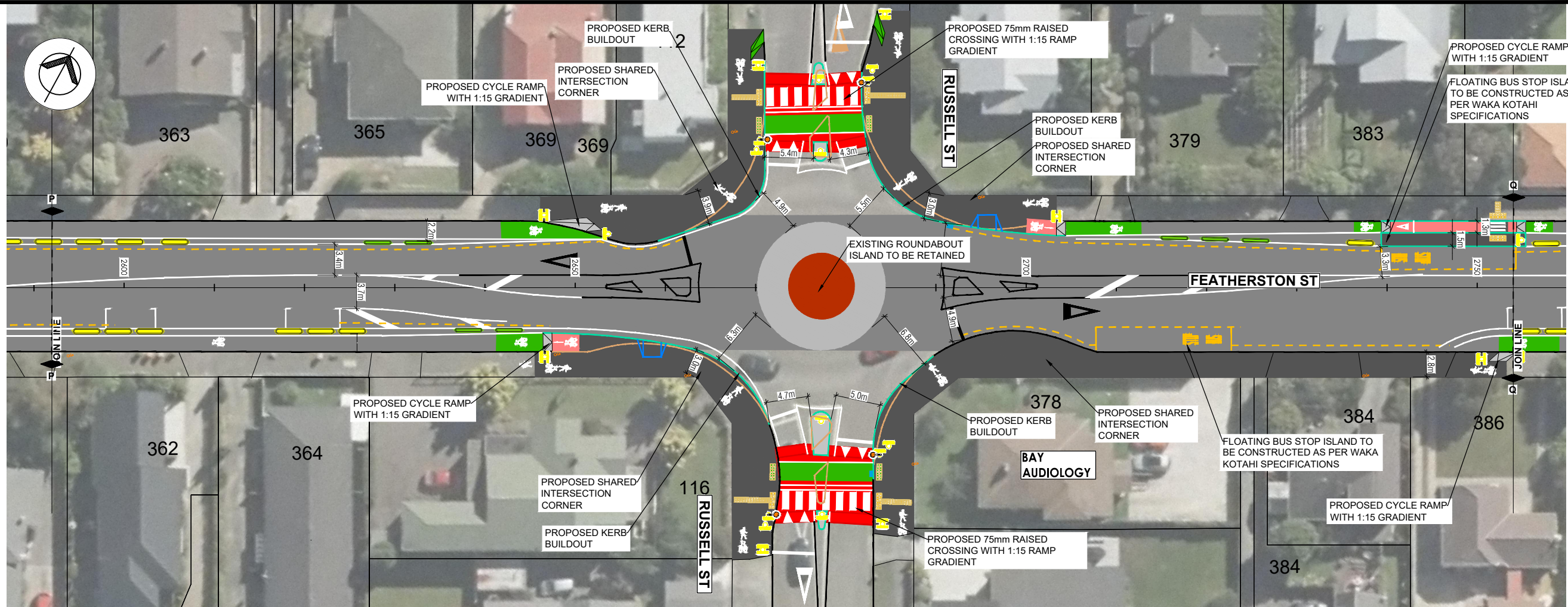
PROGRAMME	PROJECT
JOB TITLE	FEATHERSTON STREET CYCLEWAY DETAILED DESIGN

DRAWING TITLE
ROAD LAYOUT
SHEET EIGHT OF ELEVEN

DESIGNED	NAME	SIGNED	DATE
DES. REVIEW	PM		24.08.23
DRAWN	GB		24.08.23
DRW. CHECK	KL		24.08.23
	DG/PM		24.08.23

APPROVED FOR TENDER	
DATE	SIGNED
FOR CONSTRUCTION	
DATE	SIGNED
HAMISH FEATONBY - GROUP MAN. - TRANSPORT & DEV	
STUART CARTWRIGHT - CHIEF ENGINEER - APPROVED	

SCALES	A1 1:250	A3 1:500
PNCC No.	6365	
CONSULTANT No.	5-P1569.DD	
DATE	DRAWING No.	REVISION
24.08.23	C37	A



PLAN Q
Scale 1:250 A1



PLAN R
Scale 1:250 A1

NOT FOR
CONSTRUCTION

FOR COMMENT ONLY

LEGEND

- SAFETY PLATFORM RAMP
- EXISTING LINE MARKINGS
- WHITE LINE MARKINGS
- YELLOW LINE MARKINGS
- CYCLE LANE (Apple Green)
- LEFT TURN LANE ARROW
- RIGHT TURN LANE ARROW
- GIVE WAY TRIANGLE
- ADVANCED WARNING
- CYCLE SEPARATOR (600mm)
- CYCLE SEPARATOR (400mm)
- PROPOSED SIGN
- RELOCATED STREETLIGHT

- NOTES:
1. All road marking and signage to be in accordance with TCDM standards and supplemented by MOTSAM Part 1 and 2 where necessary.
 2. Warning and directional facilities to be set out and installed in accordance with RTS14 guidelines.
 3. New and existing storm water sump grates to be cycle friendly.
 4. A streetlighting review and design is to be undertaken to ensure the position and luminance requirements are met.
 5. Cycle separators are 3m long with 1.5m gap.

REV	AMENDMENTS	INITIAL	DATE
A	50% DESIGN	DG	24.08.23



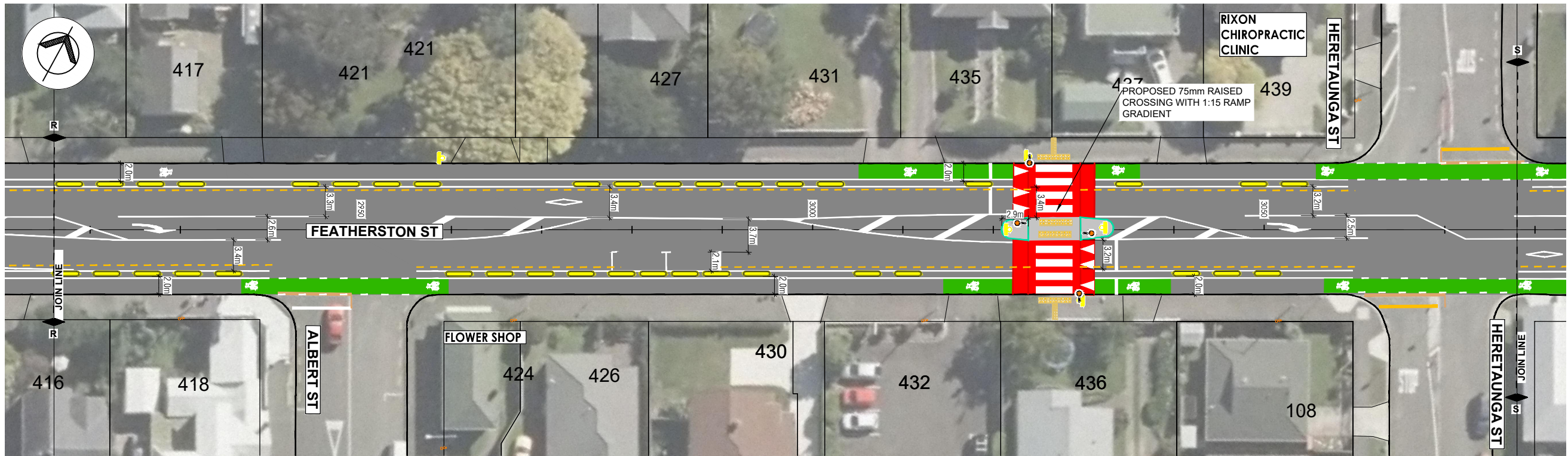
PROGRAMME	PROJECT
JOB TITLE	FEATHERSTON STREET CYCLEWAY DETAILED DESIGN

DRAWING TITLE
ROAD LAYOUT SHEET NINE OF ELEVEN

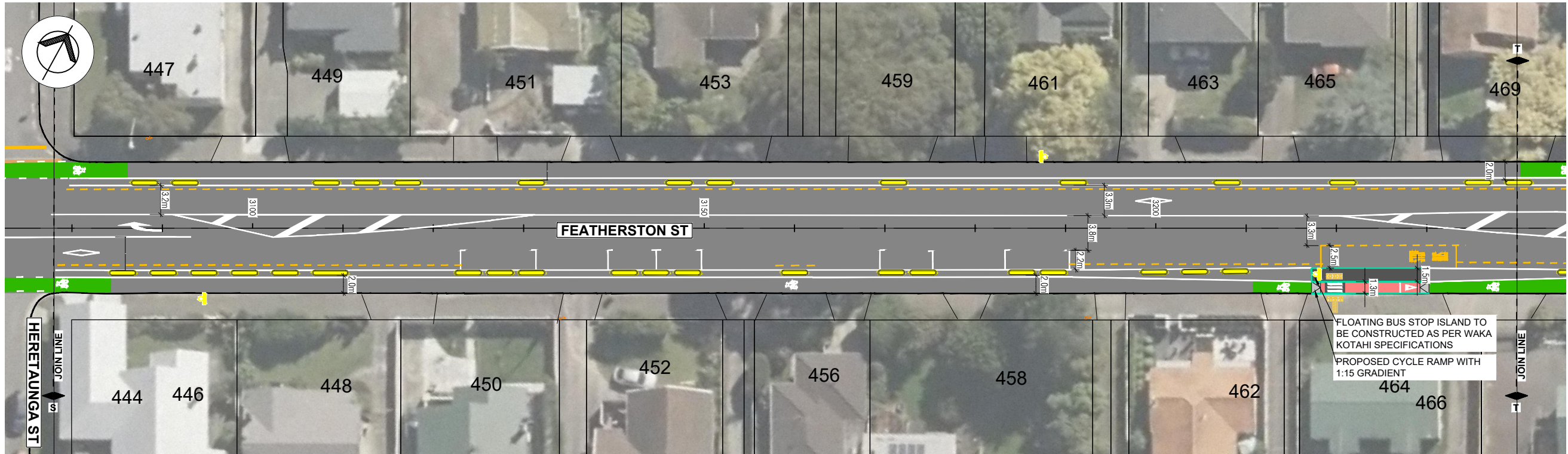
DESIGNED	NAME	SIGNED	DATE
DES. REVIEW	PM		24.08.23
DRAWN	GB		24.08.23
DRW. CHECK	KL		24.08.23
	DG/PM		24.08.23

APPROVED FOR TENDER	
DATE	SIGNED
FOR CONSTRUCTION	
DATE	SIGNED
HAMISH FEATONBY - GROUP MAN. - TRANSPORT & DEV	
STUART CARTWRIGHT - CHIEF ENGINEER - APPROVED	

SCALES	A1 1:250	A3 1:500
PNCC No.	6365	
CONSULTANT No.	5-P1569.DD	
DATE	DRAWING No.	REVISION
24.08.23	C38	A



PLAN S
Scale 1:250 A1



PLAN T
Scale 1:250 A1

NOT FOR
CONSTRUCTION

FOR COMMENT ONLY

LEGEND			
SAFETY PLATFORM RAMP			
EXISTING LINE MARKINGS			
WHITE LINE MARKINGS			
YELLOW LINE MARKINGS			
CYCLE LANE (Apple Green)			
LEFT TURN LANE ARROW			
RIGHT TURN LANE ARROW			
GIVE WAY TRIANGLE			
ADVANCED WARNING			
CYCLE SEPARATOR (600mm)			
CYCLE SEPARATOR (400mm)			
PROPOSED SIGN			
RELOCATED STREETLIGHT			

- NOTES:
1. All road marking and signage to be in accordance with TCDM standards and supplemented by MOTSAM Part 1 and 2 where necessary.
 2. Warning and directional facilities to be set out and installed in accordance with RTS14 guidelines.
 3. New and existing storm water sump grates to be cycle friendly.
 4. A streetlighting review and design is to be undertaken to ensure the position and luminance requirements are met.
 5. Cycle separators are 3m long with 1.5m gap.

REV	AMENDMENTS	INITIAL	DATE
A	50% DESIGN	DG	24.08.23



PROGRAMME	PROJECT
JOB TITLE	FEATHERSTON STREET CYCLEWAY DETAILED DESIGN

DRAWING TITLE
ROAD LAYOUT
SHEET TEN OF ELEVEN

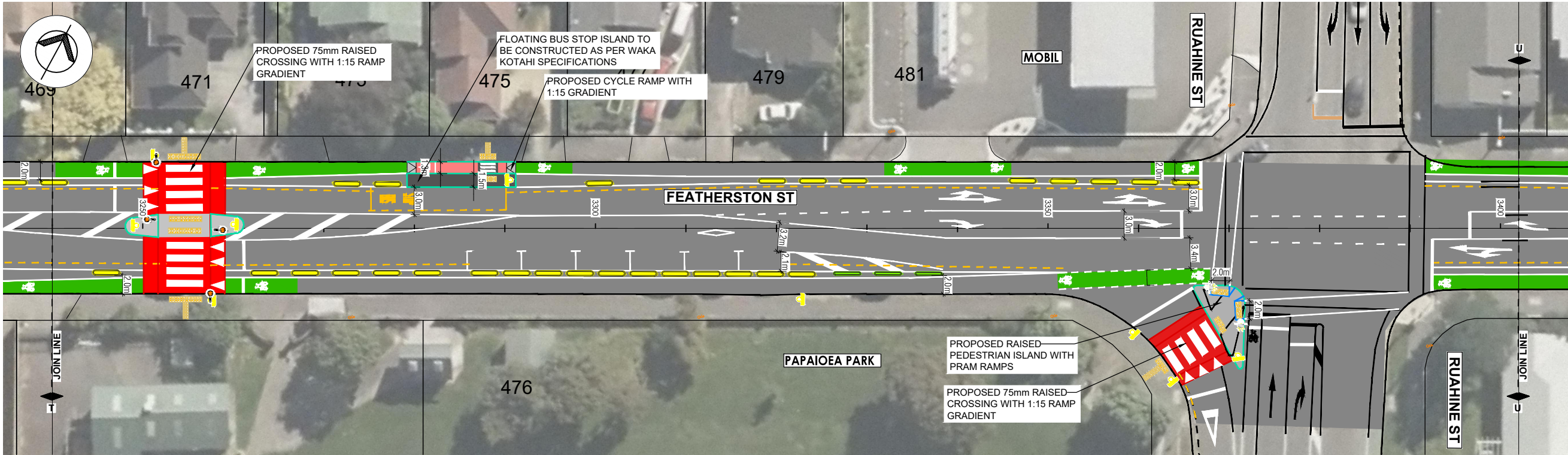
	NAME	SIGNED	DATE
DESIGNED	PM		24.08.23
DES. REVIEW	GB		24.08.23
DRAWN	KL		24.08.23
DRW. CHECK	DG/PM		24.08.23

APPROVED FOR TENDER	
DATE	SIGNED
FOR CONSTRUCTION	
DATE	SIGNED

HAMISH FEATONBY - GROUP MAN. - TRANSPORT & DEV

STUART CARTWRIGHT - CHIEF ENGINEER - APPROVED

SCALES	A1 1:250	A3 1:500
PNCC No.	6365	
CONSULTANT No.	5-P1569.DD	
DATE	DRAWING No.	REVISION
24.08.23	C39	A



PLAN U
Scale 1:250 A1

NOT FOR
CONSTRUCTION

FOR COMMENT ONLY

LEGEND	
SAFETY PLATFORM RAMP	
EXISTING LINE MARKINGS	
WHITE LINE MARKINGS	
YELLOW LINE MARKINGS	
CYCLE LANE (Apple Green)	
LEFT TURN LANE ARROW	
RIGHT TURN LANE ARROW	
GIVE WAY TRIANGLE	
ADVANCED WARNING	
CYCLE SEPARATOR (600mm)	
CYCLE SEPARATOR (400mm)	
PROPOSED SIGN	
RELOCATED STREETLIGHT	

- NOTES:
1. All road marking and signage to be in accordance with TCDM standards and supplemented by MOTSAM Part 1 and 2 where necessary.
 2. Warning and directional facilities to be set out and installed in accordance with RTS14 guidelines.
 3. New and existing storm water sump grates to be cycle friendly.
 4. A streetlighting review and design is to be undertaken to ensure the position and luminance requirements are met.
 5. Cycle separators are 3m long with 1.5m gap.

REV	AMENDMENTS	INITIAL	DATE
A	50% DESIGN	DG	24.08.23



PROGRAMME	PROJECT
JOB TITLE	FEATHERSTON STREET CYCLEWAY DETAILED DESIGN

DRAWING TITLE	ROAD LAYOUT SHEET ELEVEN OF ELEVEN
---------------	---------------------------------------

	NAME	SIGNED	DATE
DESIGNED	PM		24.08.23
DES. REVIEW	GB		24.08.23
DRAWN	KL		24.08.23
DRW. CHECK	DG/PM		24.08.23

APPROVED FOR TENDER	
DATE	SIGNED
FOR CONSTRUCTION	
DATE	SIGNED

HAMISH FEATONBY - GROUP MAN. - TRANSPORT & DEV

STUART CARTWRIGHT - CHIEF ENGINEER - APPROVED

SCALES	A1 1:250	A3 1:500
PNCC No.	6365	
CONSULTANT No.	5-P1569.DD	
DATE	DRAWING No.	REVISION
24.08.23	C40	A