

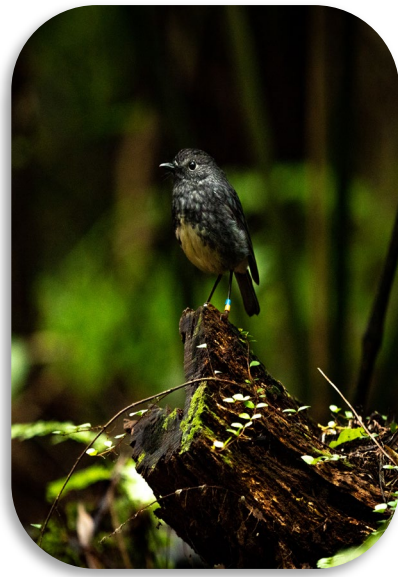


PAPAIOEA  
PALMERSTON  
NORTH  
CITY

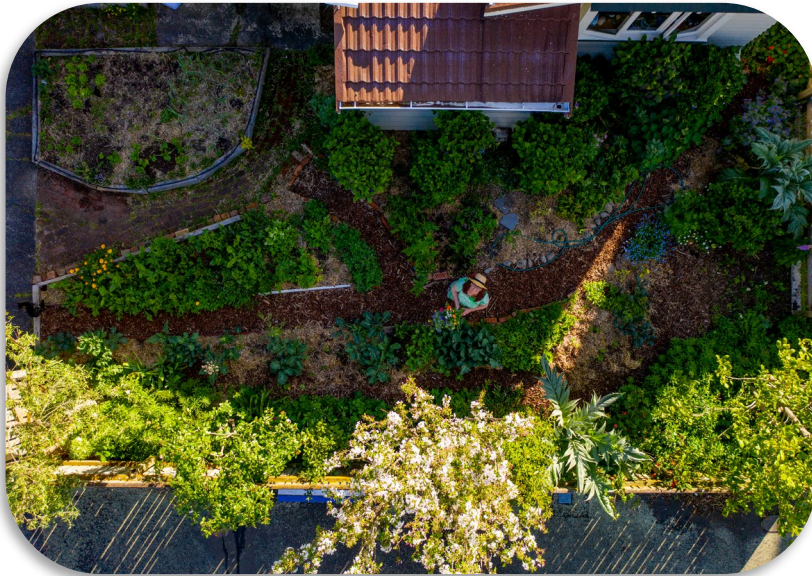
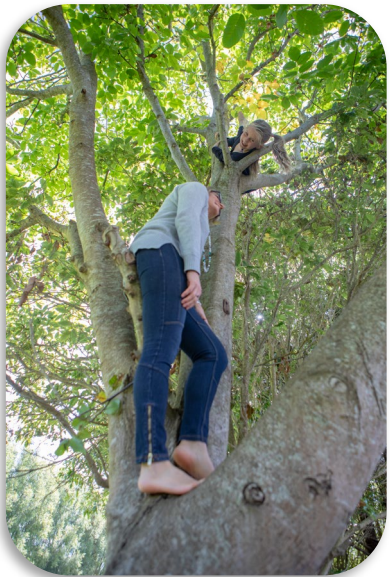
# Vegetation Framework Review

Elected Member Workshop 13 March 2024











# Overview

- We have had a Vegetation Framework since 2016, primarily focused on vegetation in public spaces. <https://www.pncc.govt.nz/files/assets/public/v/2/documents/council/plans/vegetation-framework-2016.pdf>
- Vision and purpose are not well understood. Limited impact in directing vegetation outcomes
- Awareness, embedding into project implementation and applying a consistent approach to vegetation outcomes is a challenge - e.g. low value placed on vegetation as green infrastructure, considered a nice to have, not a must-have, compartmentalised management of public spaces, reducing skills and expertise, budgets and funding.
- There is no clear or established baseline from which to measure vegetation change over time. e.g. % canopy cover, % canopy land ownership distribution, species location, size and condition
- Increasing awareness of the critical role of vegetation to help address many city issues and challenges - e.g. climate change, heat, pollution, SW management, food security, amenity etc
- For similar reasons, other cities are now developing city 'forest' plans and support tools to better understand, monitor and value vegetation - e.g. CCC Forest Plan, Auckland's Urban Ngahere, Adelaide Urban Heat and Tree Map



# Purpose

- Elevate the importance of vegetation and green infrastructure in being essential for the well-being of our people, our environment, and our city.
- Align to council strategic direction and include a vegetation policy (e.g. tree planting & removal), and support PNCC climate action plan towards becoming carbon-neutral
- Assist in addressing central government direction e.g. NPS-IB, NPS-UD, NPS-FW
- Set a clear vision and plan for citywide vegetation – both public & private.
- Establish a framework that provides direction, supports other frameworks (e.g. stormwater framework), and can be utilised by a range of users
- Establish a clear baseline for vegetation and identify measurable targets for change.
- Identify drivers and key directions to increase the knowledge and value, optimise benefits and achieve a sustainable net gain across citywide vegetation.
- Identify priorities, projects and tools to enable and support officers, user groups and landowners to give effect to delivering on the vision.



# Timeline



ENGAGEMENT/DISCOVERY

DEVELOP

REPORT

CONSULT/ENDORSE

2022 - 2023

FEB  
2024

MAR  
2024

MAR - MAY  
2024

JUNE - JUL  
2024

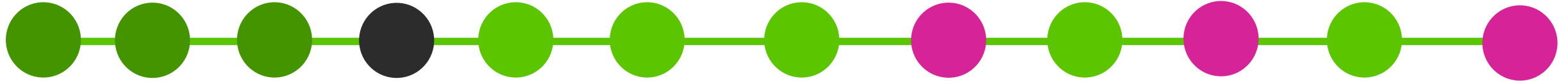
AUG - SEP  
2024

OCT  
2024

NOV  
2024

DEC  
2024

EARLY  
2025



ENGAGE  
PNCC STAFF  
&  
RANGITĀNE

DRAFT v01

RE-ENGAGE  
PNCC  
STAFF

WORKSHOP  
ELECTED  
MEMBERS

HUI  
RANGITĀNE

WORKSHOPS  
COMMUNITIES  
OF INTEREST

DEVELOP  
DRAFT  
DOCUMENT

SHARE  
DRAFT  
80%/95%

FINALISE  
DRAFT  
REPORT

REPORT TO  
COMMITTEE

PUBLIC  
CONSULTATION

HEAR  
SUBMISSIONS  
REPORT TO  
COMMITTEE



WE ARE  
HERE



MONTHLY UPDATES

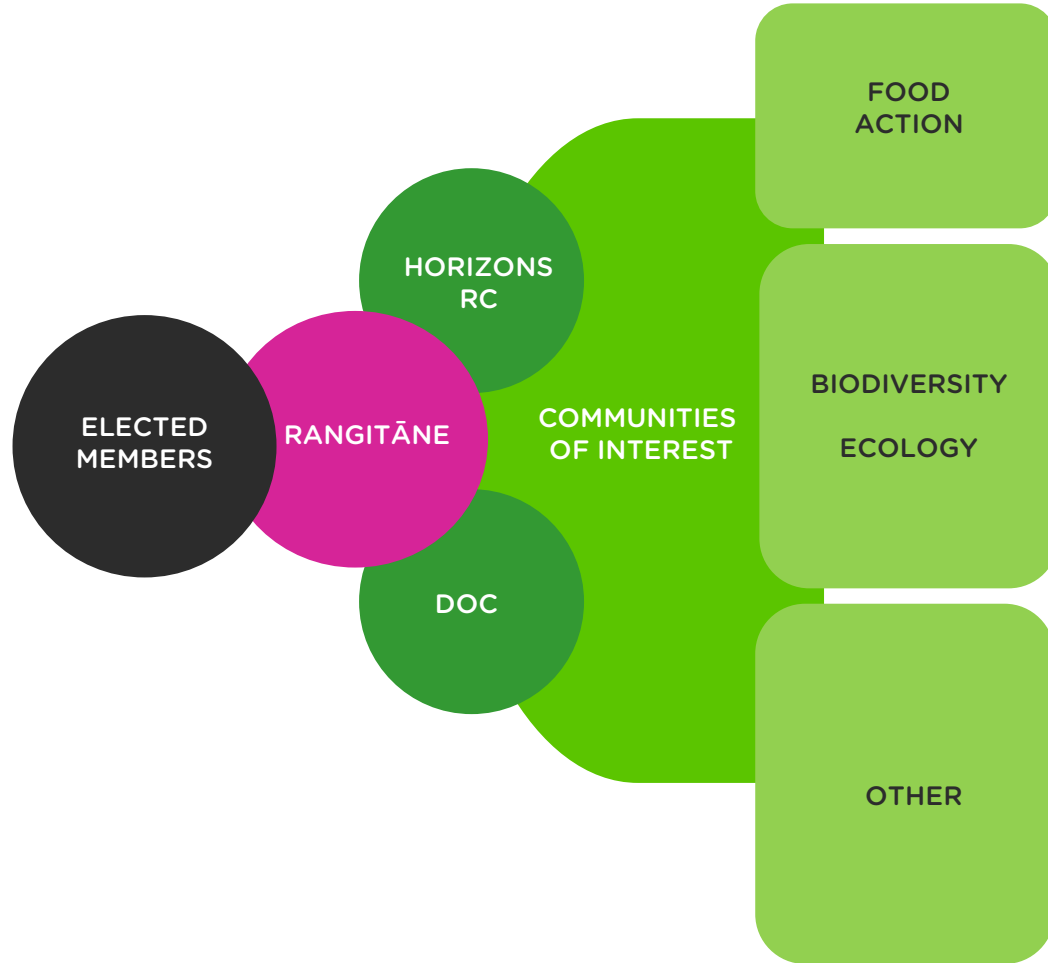


REVIEW  
DRAFT



# Who are we talking to?

## ENGAGEMENT/DISCOVERY



### Manawatu Food Action Network

- 4412 Kai Security Project
- Te Roopu Ornaga o Highbury Trust
- Te Hā o Hine-ahu-one PN Women's Health Collective
- Moheke Community Gardens
- Growing Gardens & Communities
- Supergrans
- Time Bank Manawatū
- Community Fruit Harvest
- Plant to Plate
- MUSA
- Community Supported Agriculture PN
- Ashhurst Action Group

### Source to Sea Collective Network

- RECAP
- Green Corridors
- Pit Park people Society
- Ahimate Reserve Community
- Keebles Bush Trust
- A Rocha Manawatū
- Forest & Bird Manawatū
- NZ LandscareTrust
- Fish & Game
- Puriri
- Pest Free Summerhill
- Ngā Kaitiaki o Rērengā Rauropi
- QEII National Trust
- Manawatū Beekeepers Club
- PNGHS Environment Group

### Skills & Knowledge

- Sustainable Living Education Trust
- Massey Uni Sustainability Club
- School Strike for Climate Change
- Living Streets Aotearoa
- Water Protection Society
- Extinction Rebellion
- PN Horticultural Society
- Terrace End Garden Circle
- Awapuni Garden Club
- Roses Manawatū
- Centre for Environmental Justice
- The Royal Society
- Green Drinks
- Railway Land Action Group
- Menzshed Manawatū
- Manawatū Tree Trust
- 350 Te Papaioea
- Sport Manawatū

### Development & Advisory

- Government Agencies
- Developers
- Designers
- Safety Advisory Board
- Pacifika Advisory Board
- Disability Advisory Board
- Seniors Reference Group



# What do we know thus far?

We need to leverage more off our community partnerships & collaboration

Overall vision and plan is not clear. We need a simple vision and plan that we all understand

Lack of staff expertise, skills and support in some areas to effectively deliver on vegetation outcomes

Funding and budgets for vegetation is always a challenge

Community need to understand what we are trying to achieve

Historically poor data and monitoring of city vegetation

We need to work harder with developers to manage vegetation loss on private land

Increasing H&S risks and costs with maintaining vegetation

Community views on vegetation vary between wanting more and wanting less

There is no clear policy, guidance or standards to support our work

Kai security is a real issue

Vegetation is very European in look and feel. Indigeneity needs enhancing

We need to work out what we value, and what our priorities are

It's a nice to have, not a must have

Vegetation has the potential to improve stormwater and transport networks

New vegetation is often non-purposeful, piecemeal and unco-ordinated



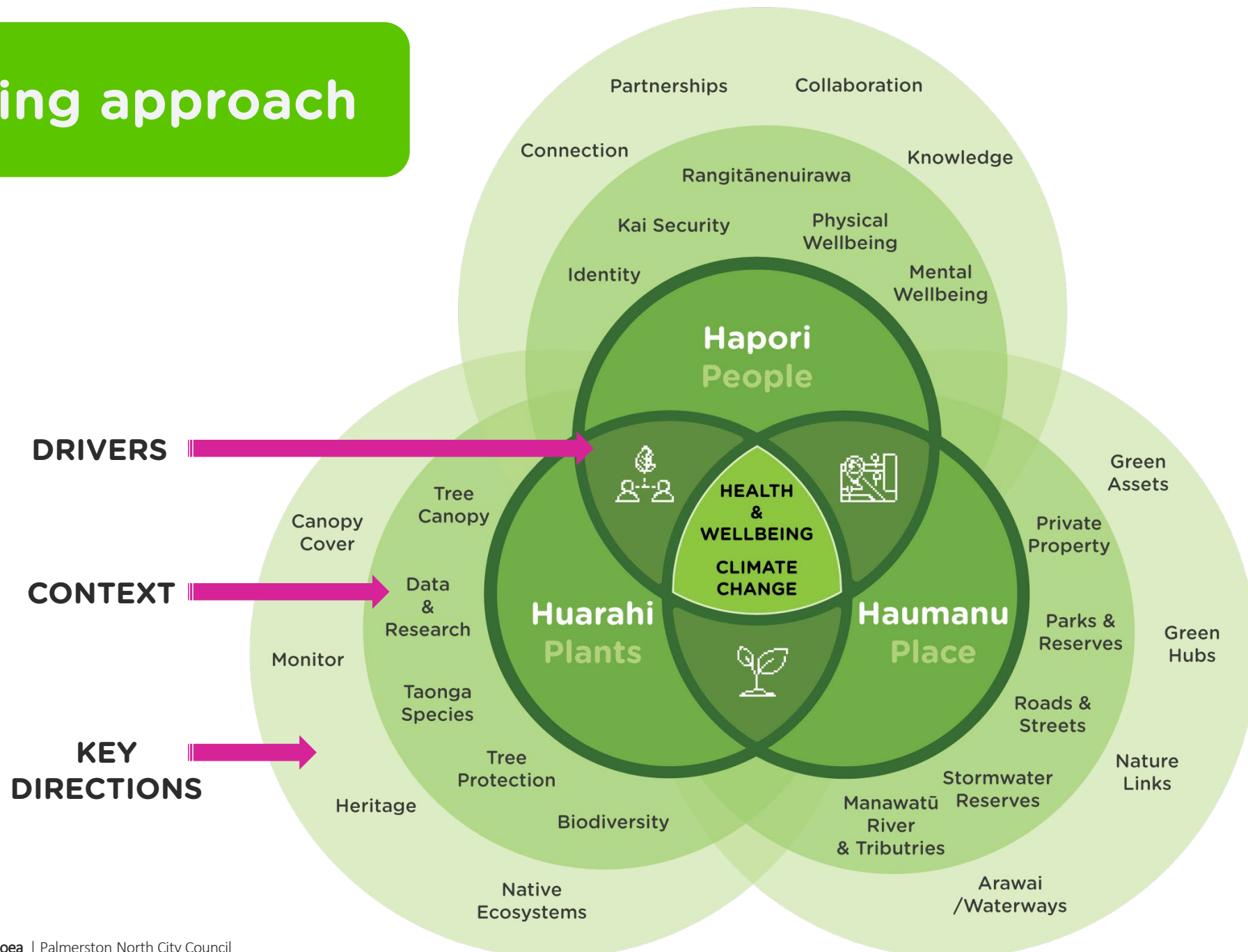
# Emerging Visions



1. The people of Palmerston North value an urban forest environment. They connect and identify with it. They are sustained and nourished by it.
  
- 2a. **People, Plants, Place**  
The healthier our urban forest environment, the healthier our connection to the natural world, the healthier our places, the healthier our people.
  
- 2b. **People, Plants, Place**  
Totara thriving, Kaka flying, Tuna abundant....healthy plants, healthy places, healthy people.
  
3. **E kore tenei whakaoranga e huri ki tua o aku mokopuna.  
Our mokopuna shall inherit a better place than we inherited.**



# Emerging approach





# Emerging approach



## PEOPLE



### Identity & Connection

Mauri  
Whakapapa  
Wellness  
Co-creation  
Kai & Rongoa  
Significant sites  
Sustainable  
Neighbourhoods

## PLANTS



### Canopy Cover

Data  
Measure/Monitor  
Goal - 20%?/30%?  
Citywide equity  
Cool-air/soil/water  
Stormwater  
mitigation

## PLANTS



### Heritage

Notable  
Protected  
Commemorative  
1000 year old  
trees  
Stories

## PLANTS



### Native Ecosystems

Biodiversity  
Wildlife havens  
Goal - 10%?/20%  
Year round food  
Predator control  
Thriving

## PLACE



### Green Assets

Private Land  
Boundaries  
Frontages  
Outdoor Living  
Biodiversity  
Corridors  
Year round food  
Kai/Rongoa

## PLACE



### Green Hubs

Open Spaces  
Accessible  
Connection  
Rejuvenate  
Active & Play  
Kai/Rongoa  
Pest/Disease  
Management

## PLACE



### Nature Links

Street network  
Support Active  
Modes  
Safer Streets  
Community  
participation  
Kai/Rongoa  
Pest/Disease  
Management

## PLACE



### City Waterways

Mauri  
Te Mana o Te Wai  
Manawatū Awa  
Tributaries  
Wetlands  
Functional  
Protection  
Thriving  
Pest/Disease  
Management

**Wellness: Physical, Spiritual, Mental & Emotional, Whenua, Whanau & Social**



# Emerging Structure

