

Memorandum

To	Tabitha Manderson
Copy	
From	Samuel Hammond
Office	Christchurch
Date	5 October 2021
File/Ref	5-P1403.00 STG01
Subject	Crematoria in Proximity to Residential Zones

Karori Cemetery - 76 Old Karori Road, Karori, Wellington 6012

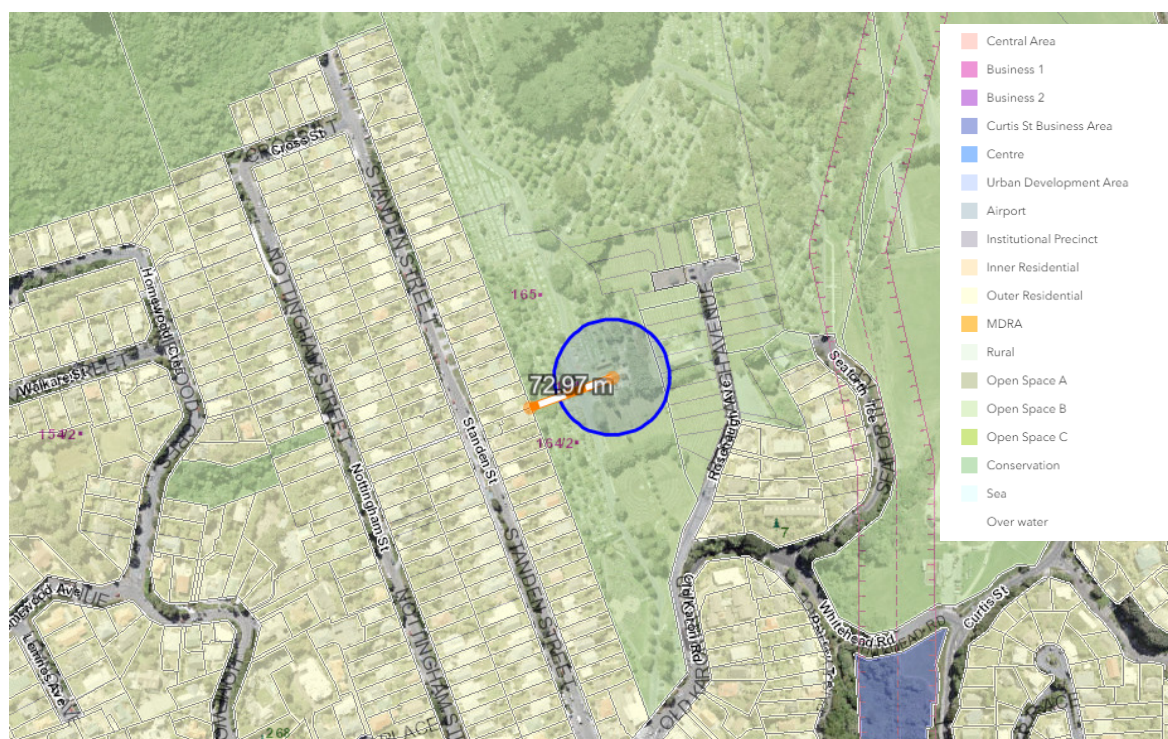


Figure 1: Karori Crematorium proximity to Outer Residential Zone. (Source: WCC)

The Karori crematorium is situated within the *Open Space B* Zone. This zone includes the surrounding cemetery. The cemetery and crematorium is enclosed to the east, south, and west by the *Outer Residential* Zone. A minimum separation of 73 metres (approx.) is provided between the crematorium and residential zone.

Anderson's Bay (Dunedin) Crematorium - 192 Tomahawk Road, Andersons Bay, Dunedin 9013

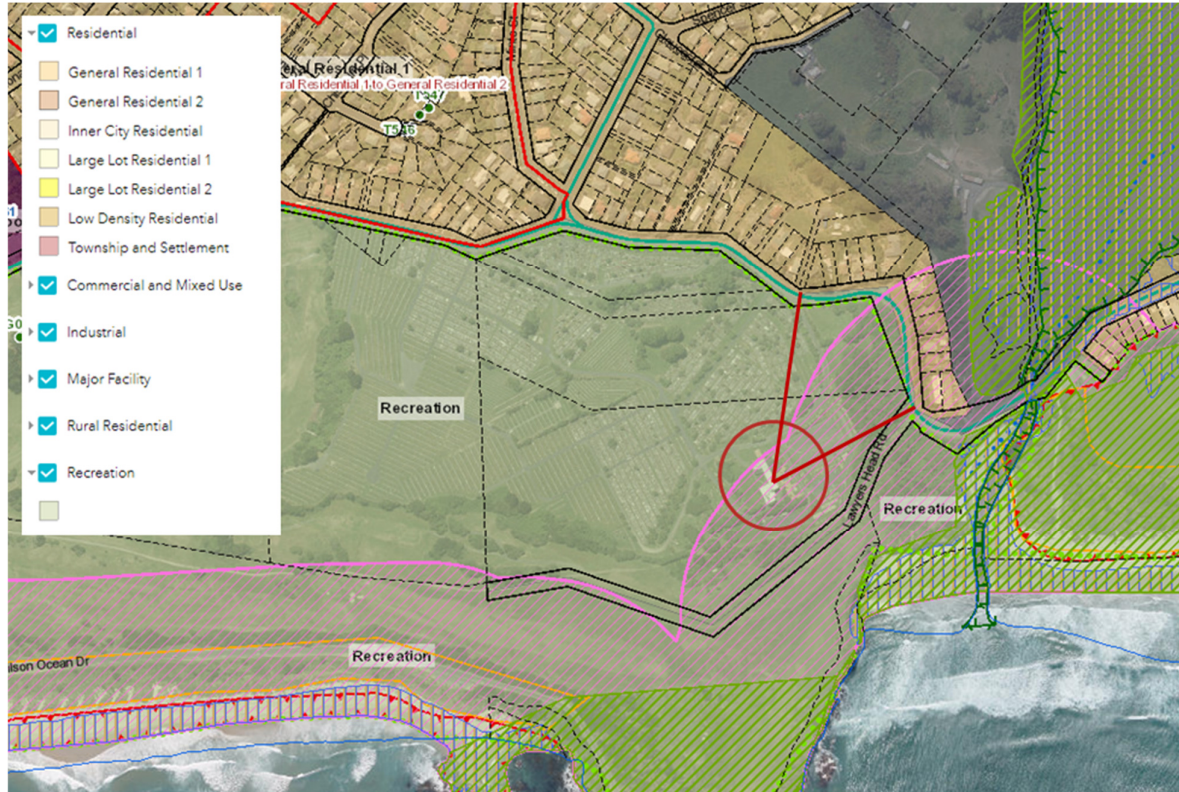


Figure 2: Anderson's Bay Cemetery and Crematorium in proximity to Residential Zone. (Source: DCC 2GP)

The Anderson's Bay crematorium is located a minimum of 200 metres (approx.) from the surrounding *General Residential Zone*. The surrounding area is primarily used for cemetery purposes and is zoned *Recreation*.

Waikanae Crematorium & Cemetery – 130 Ngarara Road, Waikanae 5036



Figure 3: Waikanae Crematorium in proximity to Residential Zone. (Source: KCDP Planning Maps (Appeals Version)).

The Waikanae Crematorium is situated within the *Open Space Zone* which is surrounded on all sides by the *General Residential Zone*. The minimum separation distance between the crematorium and *General Residential Zone* is 43 metres (approx.). This minimum distance is to the *General Residential Zone* boundary on the cemetery side of Ngarara Road and not land used for residences.

Note: Parkwood Retirement Village is located immediately to the east of this Crematorium.

Purewa Cemetery – 100/102 Saint Johns Road, Meadowbank, Auckland 1072

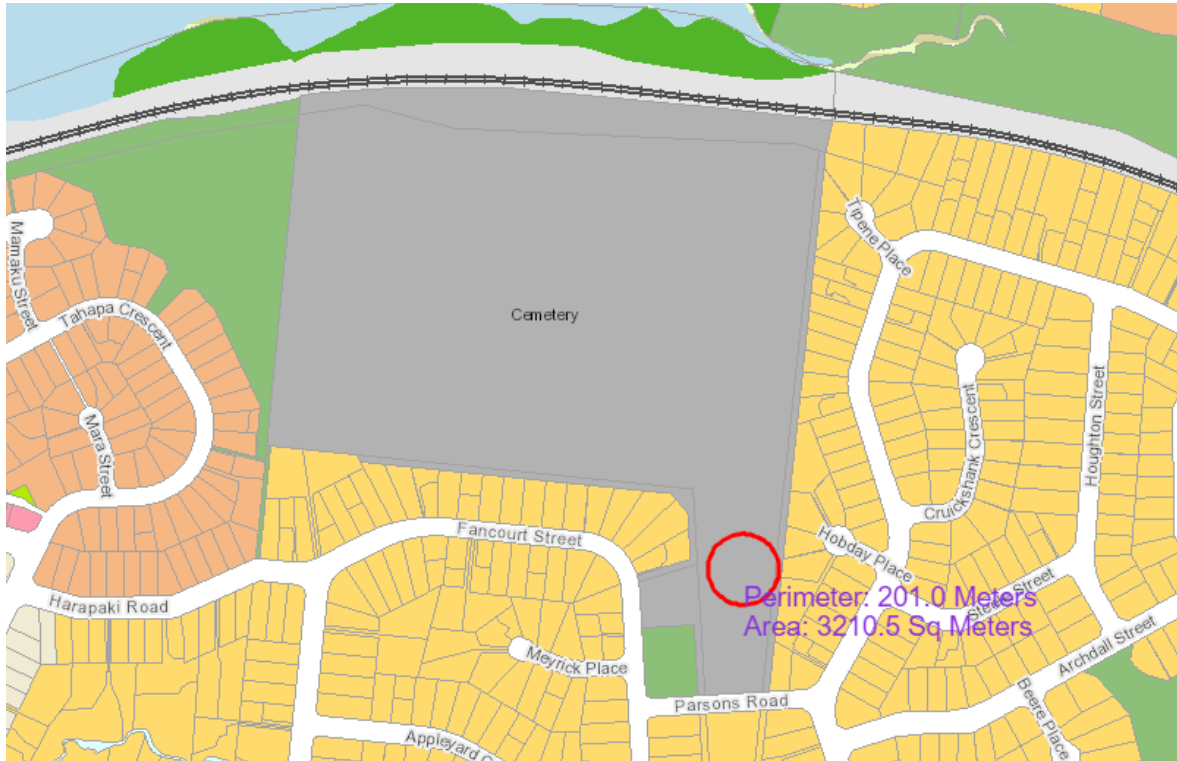


Figure 4: Purewa Cemetery and Crematorium proximity to Residential – Mixed House Suburban Zone. (Source: Auckland Council Geo Maps)

Purewa Crematorium is located a minimum of 35 metres (approx.) from the Residential – Mixed House Suburban Zone. The site is also used as a cemetery and is zoned within the Special Purpose Zone. No large open spaces, or reserves are located within the immediate surrounds of the crematorium.



Wairarapa (Masterton) Funeral Services – 38 Lincoln Road, Masterton

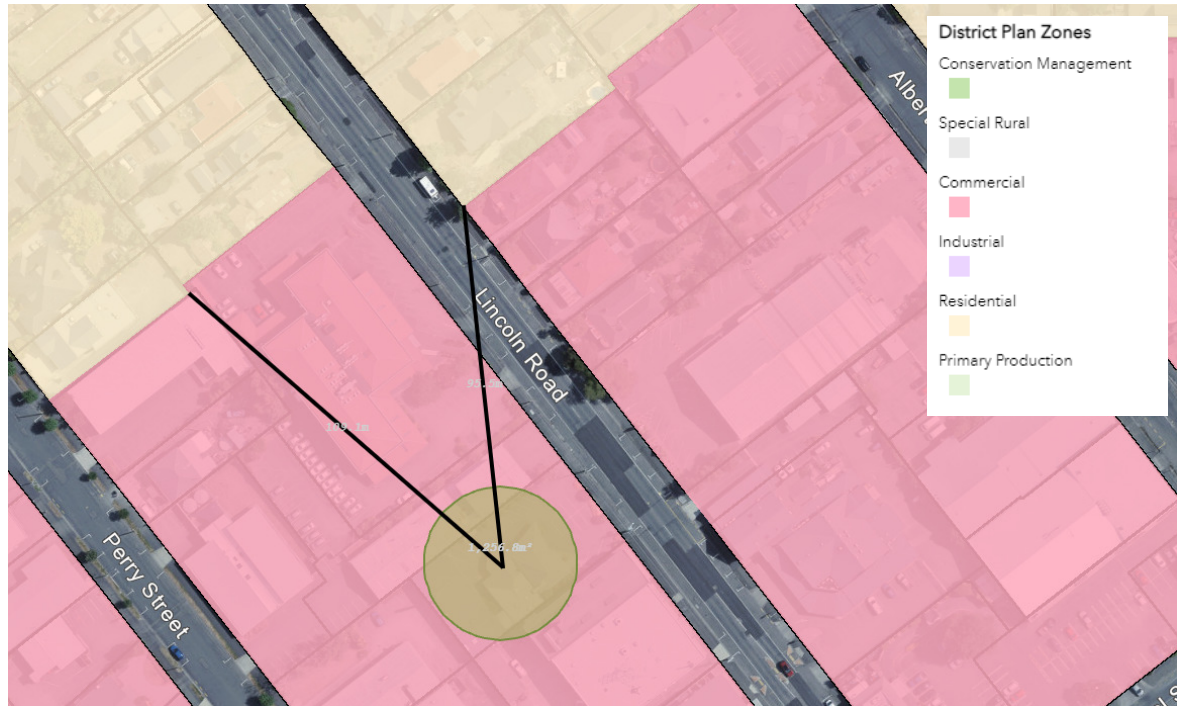


Figure 5: Wairarapa Funeral Services crematorium proximity to Residential Zone. (Source: MDC Wairarapa Combined District Plan)

The Wairarapa Funeral Services crematorium is located a minimum of 95 metres (approx.) from the *Residential Zone*. Distance to the residential zone increases towards the west. The crematorium is surrounded by low/medium density commercial land-uses. No open space or open space zone exists around the crematorium.

Harewood Memorial Gardens and Crematorium –Wilkinsons Road, Harewood, Christchurch 8051

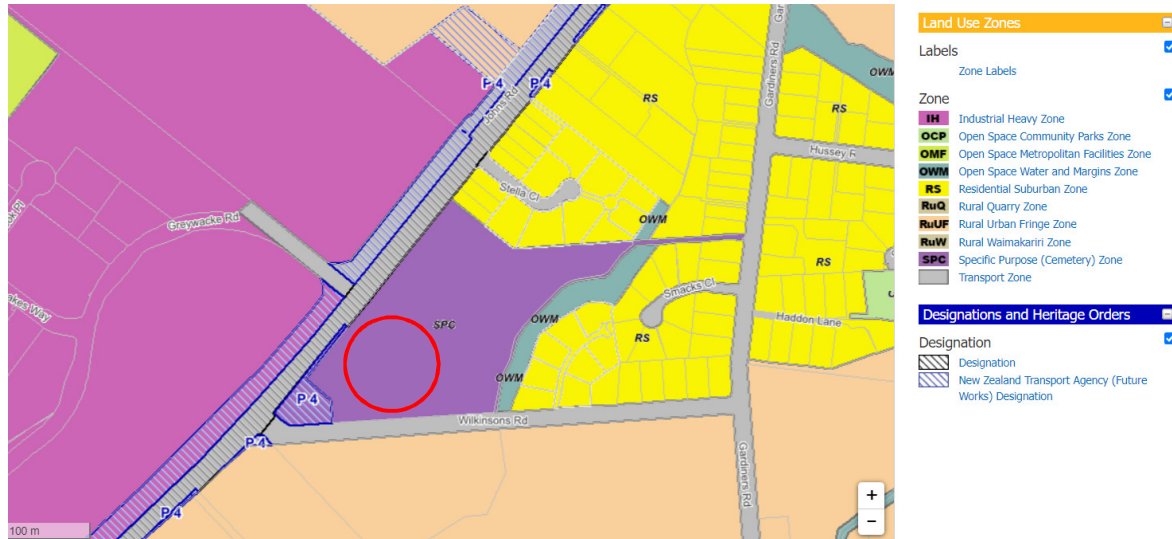


Figure 6: Harewood Memorial Gardens and Crematorium proximity to Residential Suburban Zone. (Source: CCC District Plan)

The Harewood Memorial Gardens and Crematorium is located a minimum of 250 to 300 metres (approx.) from the *Residential Suburban Zone*. The land immediately surrounding the crematorium is used for a mixture of industrial, rural, and open space purposes. Residential properties make up a minority of the surrounding land uses.