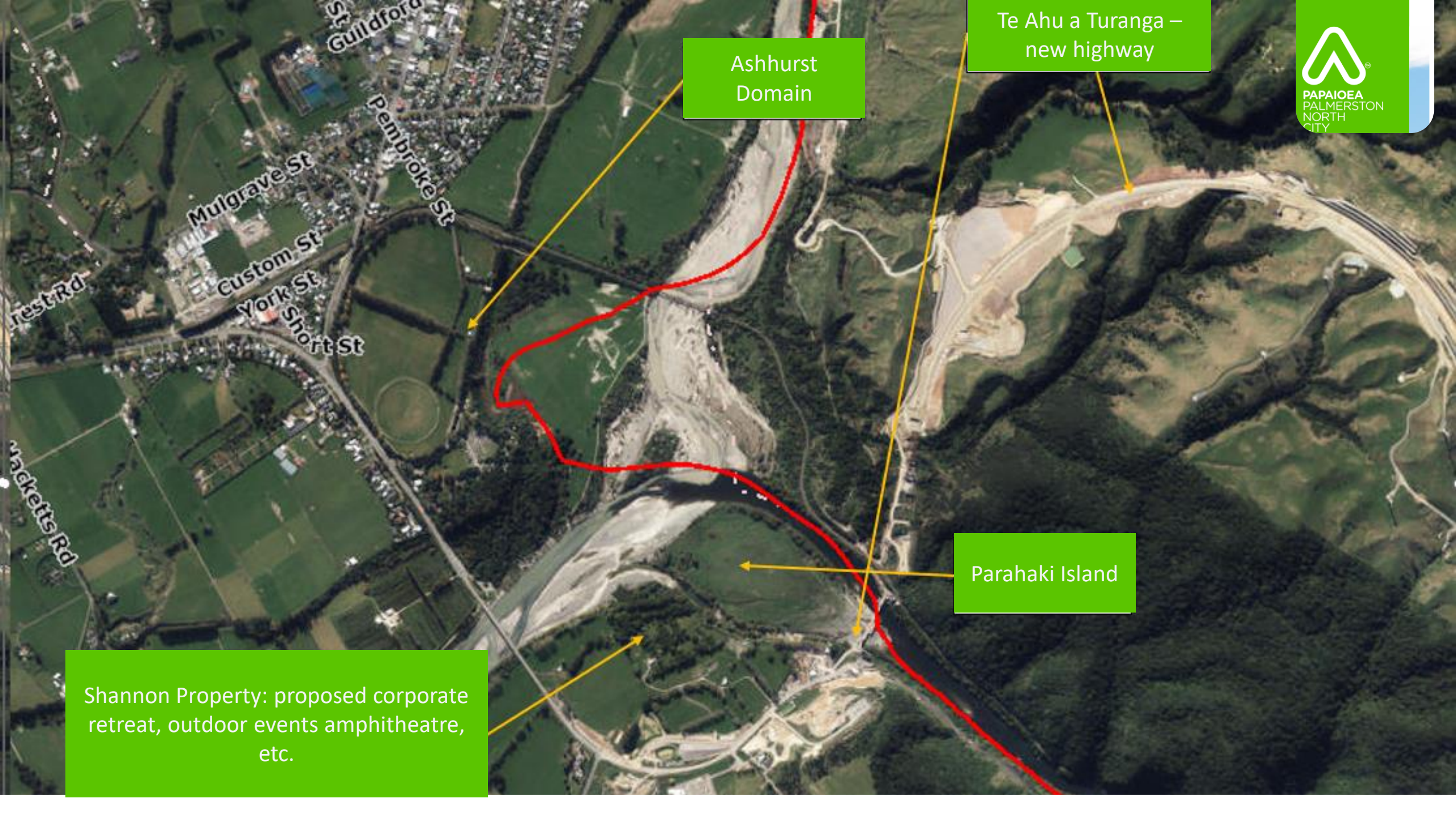


# Ashhurst Domain: Reserve Management and Development Plan

Phase I Early Engagement Workshop

# **Review the 1997 Ashhurst Domain Reserve Management Plan**



Ashhurst Domain

Te Ahu a Turanga – new highway

Parahaki Island

Shannon Property: proposed corporate retreat, outdoor events amphitheatre, etc.



PAPAIOEA  
PALMERSTON  
NORTH  
CITY



	MCC Boundary		Overhead/Underground Network
	Walk & Cycleway		Pavement Overlay/Marking
	Water		Public Recreation
	Play Areas		Park Management
	Park Zones		Recreation Fields
	Open		Softball Field
	Artificial Sports		Historical Walkway
	Swimming		Recreation Management
	Competition/Leisure		Open/Play Fields
			Other

# Engagement Report

Who did we speak with?



- ❖ Internal Stakeholders: Parks Management, Planning and Operational. Strategy and Planning. Management.
- ❖ External: Local and city representatives (Rangitāne, Sport Manawatu, RECAP, ect.)
- ❖ Public: Local and city-wide.
- ❖ Councilors: Direction Setting

December 7th 9am-12pm.		November 28 <sup>th</sup> 9am-12pm.	
Organisation	Attendee(s)	Organisation	Attendee(s)
Ashhurst Scouts	Julie Gillam-Hill	Consultant (and others)	Viv McGlynn
Ashhurst Canine Club	Peter Russell	Equestrian	Arthur Yeo
Geological	Vince Neil	Geological	Keith Joblin
Ashhurst Community Trust	Richard Tankersley	Sport Manawatu	Victor Romero
Village Voice	Lyvonne Barber	Ashhurst Senior Citizens	Terry and Colleen Carr
NZ Military Heritage	John Annabell	Horizons Regional Council	Sian Cass
RECAP	Harvey Jones	Ashhurst Pony Club	Kim Couper-Smartt and Debbie Ward
Waka Kotahi		Ashhurst Scouts	Paul Snaith
NZMCA	Joe Wolfgram	n/a	Michael Shepherd
Environment Network	Helen King	Waka Kotahi	Malcolm Chiles
Forest and Bird	Anthea McClelland	NZ Police	Phil Robinson
Ashhurst Legend	Tom Shannon & Amy Anderson		

## **Value 1: natural**

Respect for the natural world and native species – light touch

## **Value 2: family**

Family-friendly activities are given precedence

## **Value 3: connections**

Gateway park that connects seamlessly to Te Apiti; and to local connections to the Domain

## **Value 4: culture and heritage**

Cemetery, pa sites (Rangitāne) and the local village community

# Potential Developments

- Campground Extension/expansion – better integration of activities across the park
- More information on the cultural features of the site and area
- Area for cafe, food trucks, etc. re-established
- Connectivity to Te Apiti planning and the Shannon developments (single area-specific wayfinding plan)
- Upgrades (tables, seats, bins, drinking fountains, signage, power, etc.)
- Tie in natural environment to educational opportunities (signage, etc)
- New entrance – off the Sportsfield entrance - may need to consider once Te Ahu a Turanga is completed

# Management Opportunities

- Park is generally well-managed already
- Concern regarding more “permanent” stay in the campground as housing issues increase – but people are aware that people need somewhere to live...
- Manage park to ensure the natural environment, the peaceful nature of the place and the existing careful balance (people/dogs/mountain bikes, horses, etc) is maintained as population grows.





## Councillor Views

- Any changes or missing info from the values?
- Activities that should be included or developed?
- Management gaps or future smoke on the horizon?
- General comments and Questions