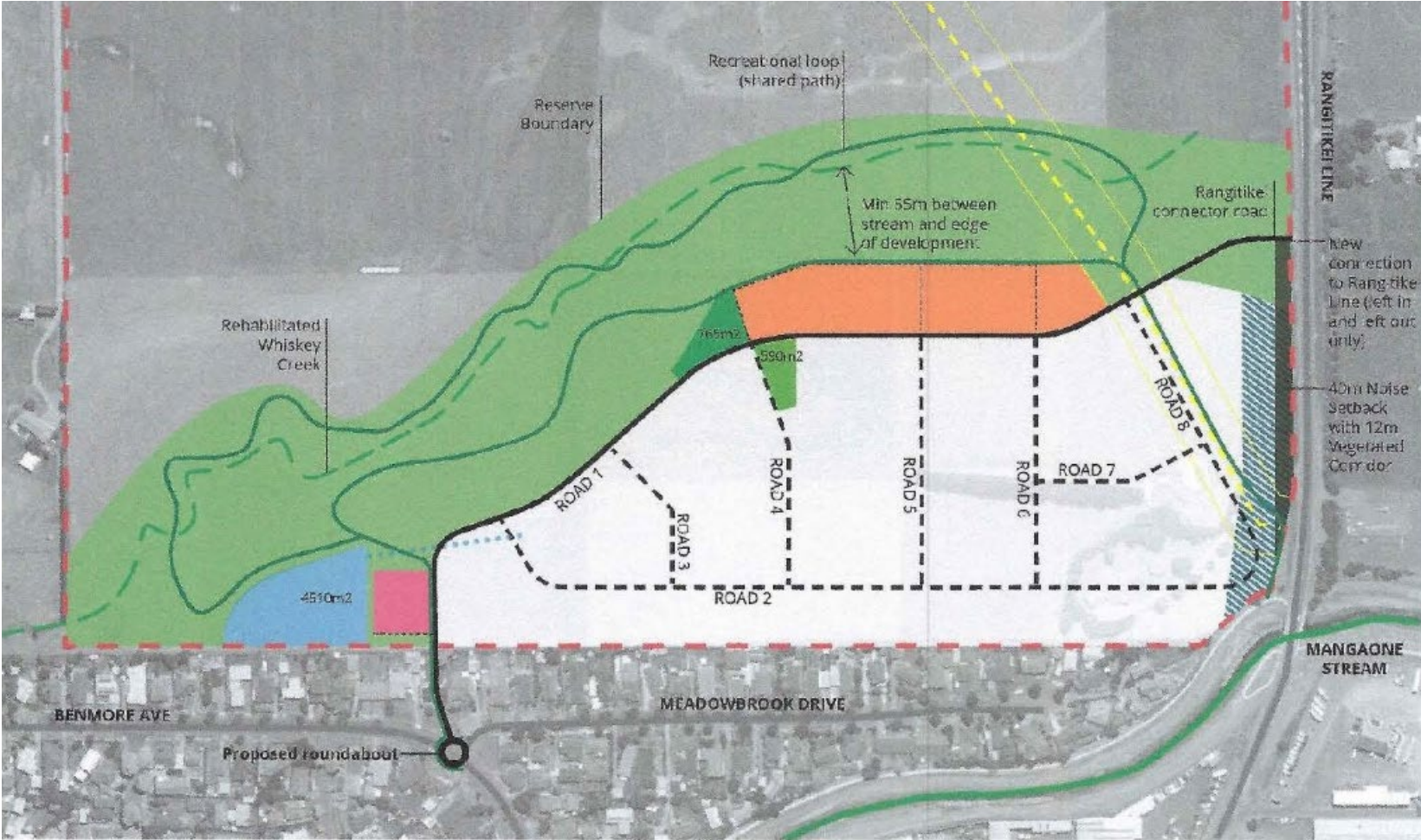


Proposed Whiskey Creek Residential Area Private Plan Change



Palmerston North City Council Process

Private Plan Change Technical Experts Reviewing Request:

Legal Support

Resource Management Lawyer *Nicholas Jessen*

Planning Assessment

Consultant Planner *Marz Asgar*

Strategic Planning

Council Principal Planner *Michael Duindam*

**Flooding Risks & Stormwater
Management**

Consultant Senior Water Engineer *Tim Preston*

**Geotechnical & Liquefaction
Assessments**

**Consultant Senior Principal Engineering Geologist *Eleni Gkeli* &
Consultant Technical Specialist Earthquake Engineering *Ioannis
Antonopoulos***

Noise Effects

Consultant Senior Acoustic *Bill Wood*

Traffic Impact

Consultant Principal Transportation Engineer *Chris Rossiter*

Infrastructure Services

**Council Activities Manager Three Waters *Jaques Mik* &
Council Service Manager – Water *David Miller***

Parks and Recreation Assessment

Council Activities Manager – Parks *Aaron Phillips*

Key Issues

1. Natural Hazards

- a. Flooding and Stormwater Management
- b. Liquefaction Effects

2. Noise Effects

3. Urban Design, including the interface adjoining properties

4. Transport

5. Commercial Activities

6. Infrastructure Services

- a. Wastewater Management
- b. Water Supply

7. Cultural Matters

8. Conservation and Amenity Zone Impact

9. Other

- a. Construction Effects
- b. Versatile Soils
- c. Impact on Water quality
- d. Negative impacts of the Stormwater detention pond