

# Palmerston North City Council

## Notable Tree Survey March and April 2011

<b>Address</b>	128 Salisbury Street, Ashhurst	
<b>Tree name</b>	Oak ( <i>Quercus robur</i> )	
<b>Location of the tree on the site</b>	Front, close to the boundary	
<b>Owner's name</b>		
<b>Date of Inspection</b>	1 April 2011	<b>Inspected by</b> John Wakeling

### Dimensions

Height m: 16	Girth @ 1.4m: 3.40	Spread m: 16
--------------	--------------------	--------------

### Condition Evaluation

Points	3	9	15	21	27	Score
<b>Form</b>	Poor	Moderate	Good	Very Good	Specimen	15
<b>Occurrence</b>	Predominant	Common	Infrequent	Rare	Very Rare	9
<b>Vigour &amp; Vitality</b>	Poor	Some	Good	Very Good	Excellent	21
<b>Function</b>	Minor	Useful	Important	Significant	Major	9
<b>Age (years)</b>	10+	20+	40+	80+	100+	21
<b>Stature (m)</b>	3-8m	9 - 14m	15 - 20m	21 - 26	27+	15
<b>Subtotal</b>						90

### Amenity Evaluation

Points	3	9	15	21	27	Score
<b>Public Accessibility</b>	Private	Visible from Road	Front Yard	Semi Public	Public (free access)	15
<b>Visibility</b>	No view	Visible from local road	Visible from collector rd	Visible from principal rd	Visible from arterial rd	15
<b>Proximity</b>	Forest	Parkland	Group of 10+	Group of 3+	Solitary	21
<b>Role</b>	Minor	Moderate	Important	Significant	Major	27
<b>Effect on Climate</b>	Minor	Moderate	Important	Significant	Major	15
<b>Subtotal</b>						93

### Notable Evaluation

Recognition Points	3	9	15	21	27	Score
<b>Stature</b>						
Feature	Local	District	Regional	National	International	
Form	Local	District	Regional	National	International	
<b>Historic</b>						
Age 100+	Local	District	Regional	National	International	
Association	Local	District	Regional	National	International	
Commemoration	Local	District	Regional	National	International	
Remnant	Local	District	Regional	National	International	
Relict	Local	District	Regional	National	International	
<b>Scientific</b>						
Source	Local	District	Regional	National	International	
Rarity	Local	District	Regional	National	International	
Endangered	Local	District	Regional	National	International	
<b>Subtotal</b>						0

### Total Points

**183**

## Inspection Report

<b>Requested for/by</b>	Routine	Storm Damage	Owner	Developer	DP Review	
<b>Pruning History</b>	No recent pruning, powerline pruning has been done quite sensitively.					
<b>Built Environment</b>	Small tight dev'pment	Standard suburban	Large house and grounds	Other (describe)		
<b>Garden environment</b>	Solo tree	Few trees	Many trees	Mainly exotic/native		
<b>Local Environment</b>	Few trees	Some trees	Well treed neighbourhood			
<b>Age Class</b>	young	Semi mature	Mature	Post mature		
<b>Special value</b>	Horticultural	Landscape	Specimen	Historical	Botanical	
<b>Structural Character</b>	Single leader	Double leader	Multi-stemmed	Included bark unions	Typical	Atypical
<b>Form</b>	Refer to STEM scoresheet					
<b>Crown Shape</b>	Typical	Atypical	Wide/spreading/low crown	Influenced by wind	Affected by power lines	
<b>Foliage Health</b>	Good	Poor, if so, explain				
<b>Limb Structure</b>	Typical sound	or Atypical, if so, explain				
<b>Trunk character</b>	Short bole, slight lean away from wind, massive and solid looking					
<b>Root Zone</b>	Garden	Natural	Lawn/paddock	U/g services apparent?	Hard surface, if so, explain	
<b>Comments</b>	The tree is looking better with each visit. The garden is well tended and designed around the tree.					

## Maintenance Required

Category	Priority	Recommended Action	Timing (from April 2011)	Actioned	Completed
<b>Amenity</b>	<b>routine</b>	Raise/trim crown when needed	5 years		
<b>Health</b>	-				
<b>Safety</b>	-				
<b>Overhanging b'dry</b>	<b>routine</b>	The outer edges of the crown are kept pruned by the power company	As required		

<b>Standard procedures</b>	Deadwood – crown lift – reduced crown width – thin crown – height reduction (not rec'nded for notable trees) - other
<b>Special Measures and recommendations</b>	Mulch base – irrigate – improve drainage – underplant – cable brace - other
<b>Timeline</b>	Now - 5 years - 5 yearly - As required

<b>Changes noticed in last five years</b>	Improvements in the tree health and maintenance regime.
---	---

## Photographs



Figure 1. Tangle of overhead power lines and supporting poles



Figure 2. House and tree.



Figure 3. Tree and Garden

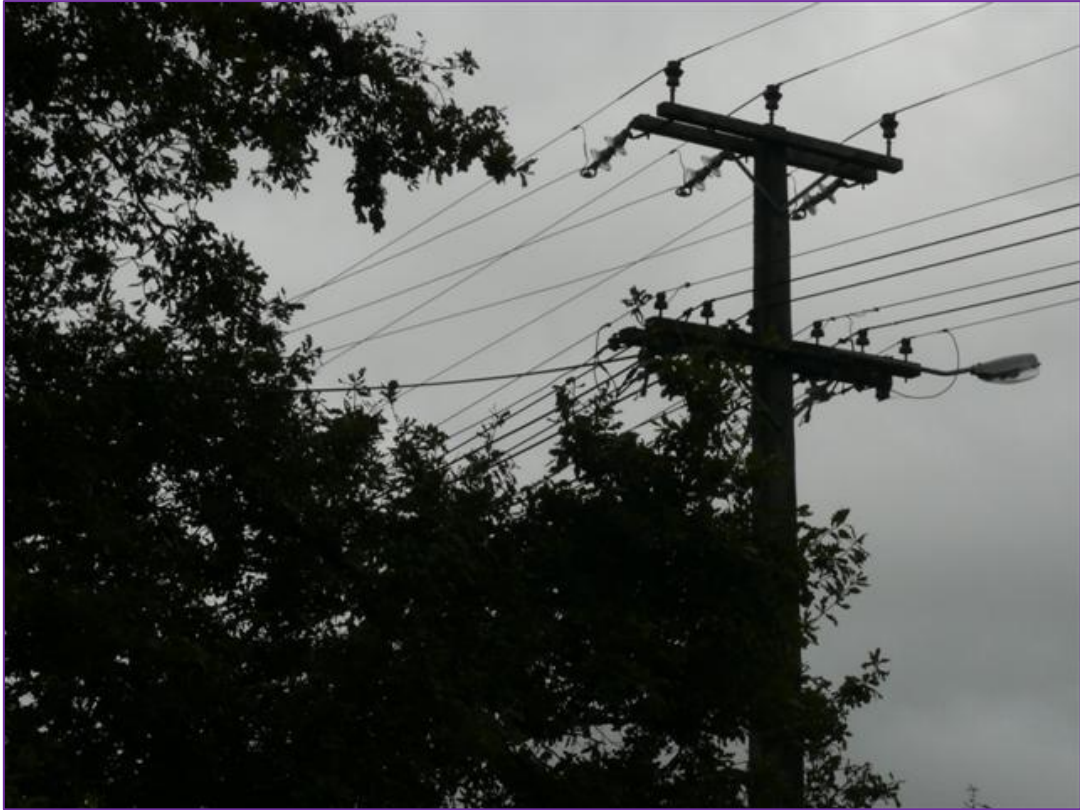


Figure 4. The need to prune away from the high tension lines is apparent.



Figure 5. The challenge: to reduce the impact of the overhead lines outside the property.

